



ARCHAEOLOGY ON FURLOUGH

ONLINE VOLUNTEER PROJECTS IN THE TIME OF COVID-19

The Sheepfolds of the Lammermuirs

Brittni Bradford, David Connolly, Lily Hawker-Yates,
Hanka Kdolska, Cas Paice and Gemma Scott.

Archaeology on Furlough Coordinator: Rob Wiseman

AUGUST 2020

TABLE OF CONTENTS

About Archaeology on Furlough	4
Summary.....	6
Methodologies.....	7
Introduction: Data Collection	7
Data Collection Procedure	7
Data processing	10
Geospatial Analyses	13
Toponomastic Etymology Analysis	13
Limitations	14
Results and Discussions	15
Overall Data Results	15
Distribution and Analysis of Raw Data	16
A Visual Typology	18
Sheepfold (Circular Stone)	18
Sheepfold (Circular Turf)	18
Keyhole Fold	18
Spectacle Fold	19
Sheepfold (Other)	19
Field Enclosure (Rectangular)	19
Field Enclosure (Corner)	20
Sheep Stell - T	20
Sheep Stell - Y	20
Sheep Stell - C	21
Sheep Stell - X	21
Sheep Stell - V	21
Sheep Stell - wall	22
Sheep Dip/ Sheep Wash	22
Sheep Enclosure (Complex)	22
Sheep House	23
Sheep Shelter (Structure)	23
Livestock Enclosure	23
Livestock Pen	24
Farmstead	24
Potential for application of LiDAR	25
Background history of sheep farming in the Lammermuirs	29
Applications of LiDAR and landscape analysis	31
Landscape stratigraphy with circular sheepfolds over earlier ridge and furrow	32
Topographic influences on sheepfold location	33
Proximal feature influences on sheepfold location	35
Place Names of the Lammermuirs	36
Conclusions	40
Further research	41
Bibliography and References	42
Cartographic Sources	43
Appendix 1 Site List	44
Appendix 2 Placenames in the Lammermuirss (from recorded sites)	71

List of Figures

Figure 1:	Project survey extent
Figure 2:	Resource coverage
Figure 3:	Examples of remote resources variability in visibility
Figure 4:	All recorded sites within the survey area
Figure 5:	Circular sheepfolds and stells
Figure 6:	Sheepfolds (multiple internal enclosures), field enclosures and folds for dipping and washing
Figure 7:	Recorded farmsteads and sheephouses
Figure 8:	Roy's map of 1755 (1747–1755) showing area around Burnhouse and Threeburnford, overlain on a recent aerial view; capturing the changes from the 'ridge and furrow' to enclosed field and pasture
Figure 9.1:	Lidar imagery of Enclosure 573
Figure 9.2:	Lidar imagery of Enclosure 635
Figure 9.3:	Lidar imagery of Enclosure 407
Figure 10:	Sheepfold placement trends demonstrate preference for less elevated areas
Figure 11.1:	Exceptional sheepfolds in Grid 1 (A) and 3 (B) skirting higher elevation areas
Figure 11.2:	Exceptional sheepfolds in Grid 2 (A) and 4 (B, C) skirting higher elevation areas

Picture credits

Bing Maps (throughout), historical aerial photography.
Microsoft product screen shots reprinted with permission from Microsoft Corporation.
Images © 2020 Microsoft Corporation, © 2020 Maxar, © CNES (2020) Distribution
Airbus © 2020 HERE

Google Earth (throughout), historical aerial photography.
2007: © 2020 Getmapping
2009, 2012, 2013 © 2020 Maxar Technologies
2019, 2020: © 2020 Maxar Technologies and © 2020 CNES/Airbus.

Lidar data (Figures 2, 3, 9.1, 9.2, 9.3, 10, 11.1 and 11.2)

<https://remotesensingdata.gov.scot/data#/list>
Scottish Public Sector LiDAR (Phase 3) – 2019. Open Government License.
Crown copyright Scottish Government, SEPA and Fugro (2020).

Figure 1

Ordnance Survey © Crown Copyright and Database Right 2019.

Figures 2 and 3

1853, six inch to the mile
1892, 25 inches to the mile
Ordnance Survey © Crown Copyright

Figure 8

William Roy, The Military Survey of Scotland.
Copyright © The British Library Board CC.5.a.441

ABOUT ARCHAEOLOGY ON FURLOUGH

When the spread of coronavirus COVID-19 forced the UK into shutdown in 2020, Archaeology on Furlough was set up to provide volunteer projects for archaeologists unable to work. Around 120 people registered via the website (www.archaeology-on-furlough.com), and most went on to be active participants in the eleven projects on offer. The bulk of participants were professional archaeologists and specialists from commercial units. A number were university students, unable to access laboratories or other research facilities. A few were museum curators or retired archaeologists.

The projects undertaken by the volunteers involved collecting and analysing data on:

- Roman cultivation strips in the East of England
- gravegoods in the Iron Age, Roman and Anglo-Saxon periods (Cambridgeshire and Oxfordshire)
- trauma in skeletons from the in the Iron Age, Roman and Anglo-Saxon periods (Cambridgeshire and Oxfordshire)
- aurochs remains from Scotland, England and Wales
- Saxon houses from Scotland, Northern England and the Midlands
- henges excavated in Scotland, Northern England and the Midlands
- historic sheepfolds of the Lammermuirs Hills (Scotland)
- barrows and other Bronze Age sites on Dartmoor
- temples in Roman Britain
- decoration used in prehistoric Britain
- digital tablets for use in archaeological fieldwork.

Once completed, the grey literature project reports and datasets generated by the project teams will be made available via Cambridge University Library's Apollo repository (<https://www.repository.cam.ac.uk/>).

Projects were all conducted voluntarily, so that participants could comply with the requirements of the UK Government's Coronavirus Job Retention Scheme.

For many of the volunteers, Archaeology on Furlough was an opportunity to research unfamiliar topics, and discuss them with peers. For some, it was an opportunity to develop new skills, particularly research skills which they did not get the opportunity to use in their regular fieldwork. For a few, Archaeology on Furlough provided their first opportunity to write a report.

Archaeology on Furlough was also intended to provide support for archaeologists out of their normal workplaces. Volunteers used video conferencing and various message boards to keep in touch with one another.

Archaeology on Furlough was developed and coordinated by Rob Wiseman (Cambridge Archaeological Unit, Department of Archaeology, University of Cambridge).



Shorn sheep grazing in the Lammermuir summer pastures (picture: David Connolly)

SUMMARY

Likely stretching back to at least the later prehistoric period, and continuing even today, sheep farming in the Lammermuir Hills has had a profound impact upon not just the history, but also the culture, economy and above all, the landscape of this part of South East Scotland. This project chiefly aimed to look at the effects that sheep farming had upon the Lammermuirs' landscape, with the specific intention of identifying and cataloguing sites related to sheep farming within the defined search area. These sites included primarily sheepfolds, as well as sheep dips, sheep houses and other livestock enclosures.

Using a range of sources, including Google Earth, Bing Maps, Ordnance Survey Maps and Scottish Govt LiDAR, a total of 860 sites were identified and recorded, along with their size, location and other identifying features, both as a written document and GIS dataset. During the search, a typology was developed to eventually include twenty different varieties of site/structure. These included circular sheepfolds (by far the most common feature, with 289 stone or turf examples identified), and a limited number of sheep shells (which functioned as a form of temporary accommodation for sheep and which had a wide variety of configurations). Thirty-four sheep dips, or sheep washes, were identified, as well as twenty sheep houses and six sheep shelters. Other forms of sheepfold were also found within the search area, along with livestock pens, enclosures and farmsteads.

Once sites had been recorded and identified, research into the dataset using LiDAR yielded further results with regards to the positioning of features. This includes, in particular, the relationship between medieval rig and furrow and circular sheepfolds: where sheepfolds were found within tracts of rig and furrow, sheepfolds were always superimposed on top of existing cultivation or impacted them. This therefore clearly shows them to be later in date, according to the stratigraphic record (historical analysis suggests that the majority of sheepfolds date from the later-eighteenth or early-19th century onwards).

In addition, QGIS analysis of the dataset suggested that the landscape's topography strongly influenced the choice of location for sheepfolds within the Lammermuirs. This can be seen by the fact that there appears to have been a preference for building sheepfolds at elevations of 100m or lower, with only a few outlying examples being identified outside of this range. This is possibly due the fact that adverse weather conditions are more common at higher elevations, while other features required for sheep husbandry are also more likely to be found at lower levels. Indeed, preference for proximity to both roadways/pathways (56% of sheepfolds) and water (36% of sheepfolds), as well as wooded or plantation areas and standing structures (28% and 25% of sheepfolds accordingly) was also identified.

Analysis of proximal place name data similarly yielded significant results, with several toponyms being linked to the practice of sheep farming in the area. This included, among others, place names containing elements such as *sheil* (a small house occupied by a shepherd; example - *Branslyshiel Rig*), and *wedder* (from the Old English word for ram, *weðer*; example - *Wedder Law*).

Overall, the project found a range of information relating to the history of sheep farming in the Lammermuir Hills and highlighted a number of areas for further research. This includes but is not limited to: further examination into the relationship between sheepfolds and rig and furrow; more in-depth study into the meanings of toponyms; an examination of the types of enclosures that may have been used at different times of the year; and the examination of the role of tracks and roads in relation to sheep enclosures, movement and droving.

The project team was Brittni Bradford, David Connolly, Lily Hawker-Yates, Hanka Kdolska, Cas Paice, Gemma Scott, Maria Bellissimo, Timothy Jones and Sorcha Maddern.

METHODOLOGIES

Introduction: Data Collection

Multiple sources were consulted for the initial remote survey of Lammermuir Sheepfolds, including Bing Maps¹, Google Earth² (various dates 2007–2019)³, and a range of Ordnance Survey Maps, reviewed through the National Library of Scotland website⁴ (Figure 2). The initial method for collecting the location of sheepfolds, and potential sheepfolds was based solely on utilising the Google Earth software and placing points that were saved as KML files, while simultaneously collating the additional data on an excel spreadsheet with the following fields:

- Unique Number:
- Point_Code:
- Location (Easting)
- Location (Northing)
- Nearest Toponym
- OS First Edition Map Reference
- Enclosure length (m)
- Enclosure width/diameter (m)
- General Shape (Circular, Complex, Rectangular etc.)
- Material (DryStone or Turf etc.)
- Topographic setting: (redundant field)
- Other comments

Although possible to conduct the survey entirely on Google Earth, the use of the freely available QGIS allowed for more flexibility and opportunity for learning for some team members⁵, including live linked spreadsheet data, and the use of multiple aerial image sources, including LiDAR data and subsequent processing as well as georeferencing map data. However, some members of the team used only the Google Earth system, where points were located on the map and finally transferred to a GIS platform via KML. Google Earth however does not allow for Ordnance Survey coordinates and this required separate processing adding another layer of complexity. The initial personal preferences for collecting data points and the concomitant issues were discussed in weekly zoom meetings. Individual methodology statements were produced in order to understand the process as a whole which forms the basis of the next section.

Data Collection Procedure

The process for examination of cartographic/satellite imagery/LiDAR sources and data entry was streamlined over the lifespan of the project and the finalised methodological workflow created. The two main methods used, direct to GIS and Google Earth, are noted if there is a significant divergence.

The survey area across the Lammermuirs was agreed (Figure 1) and this was then divided into 10km squares, which were assigned to individuals as their survey zones (it was found that drawing a square around the area assisted in staying within your area, but it was harder to achieve this in Google Earth). These 10km squares were then subdivided into 1km square. This provided an easier way to visually search one square at a time at a resolution which enabled team members to view sites on the ground – however, again there were issues when translating this to Google Earth.

¹ <https://www.bing.com/maps>

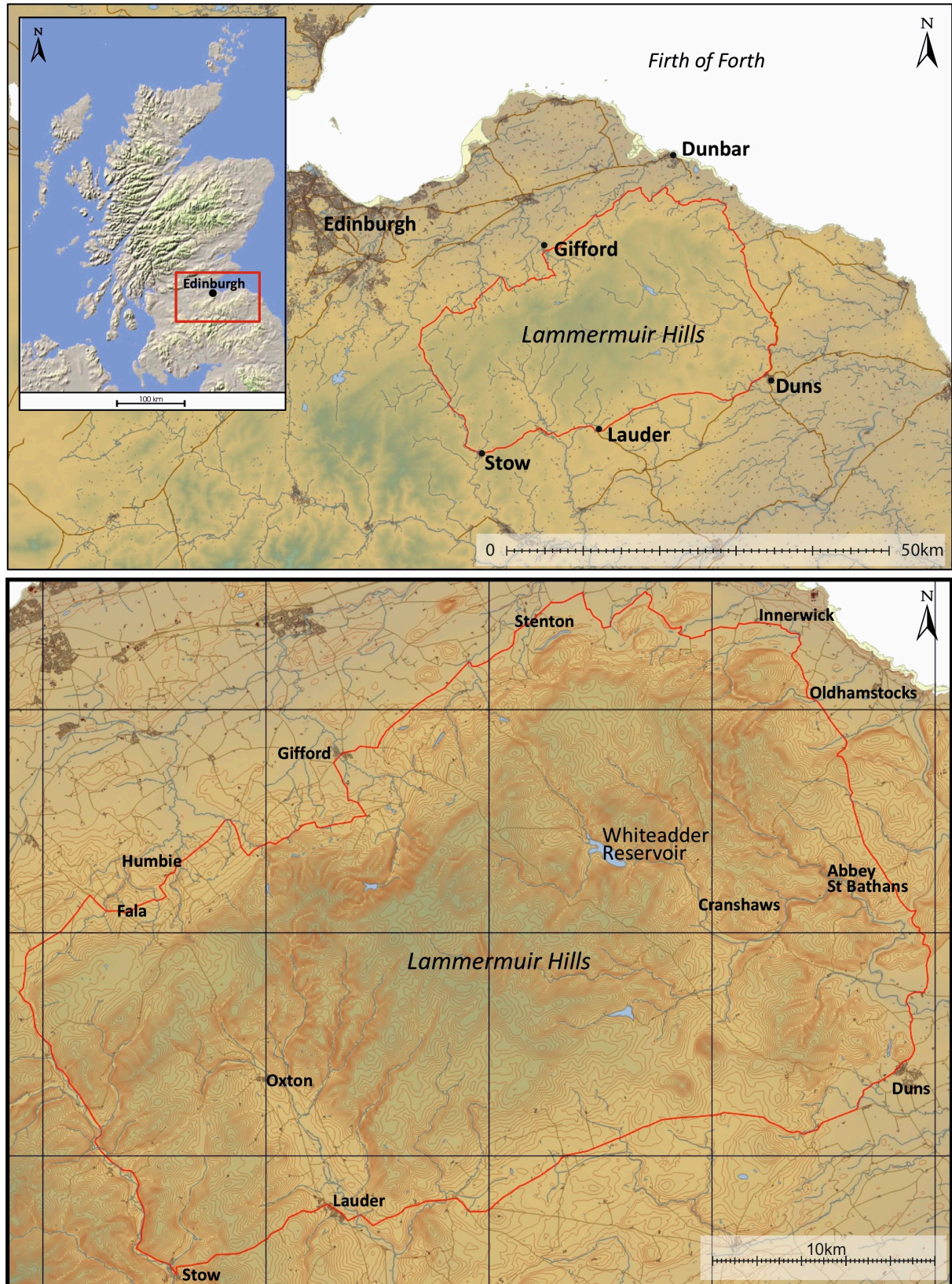
² https://www.google.co.uk/intl/en_uk/earth/

³ <https://remotesensingdata.gov.scot/data#/map>

⁴ <https://maps.nls.uk>

⁵ QGIS for Archaeologists (BAJR Guide 42)

http://www.bajr.org/BAJRGuides/42_QGIS_StarterGuide/42_BAJR_Guide_QGIS.pdf

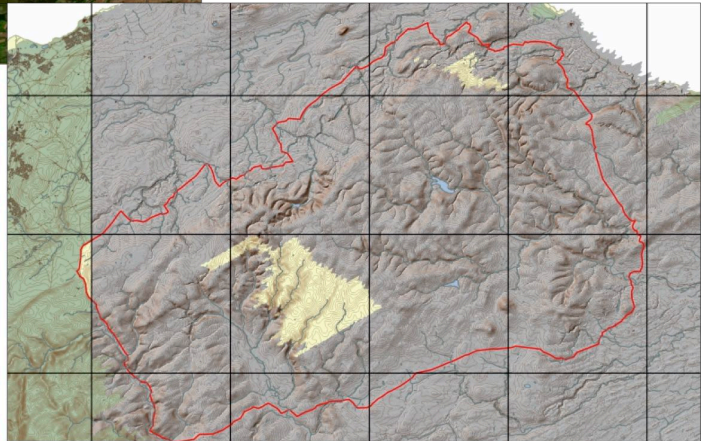


Contains OS data © Crown Copyright [and database right] 2019

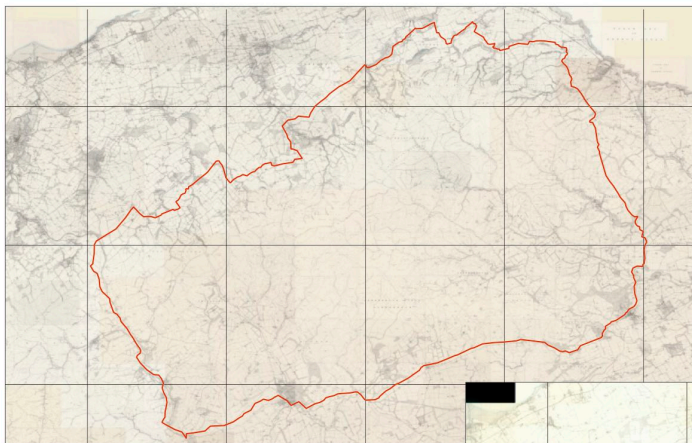
Figure 1: Project survey extent



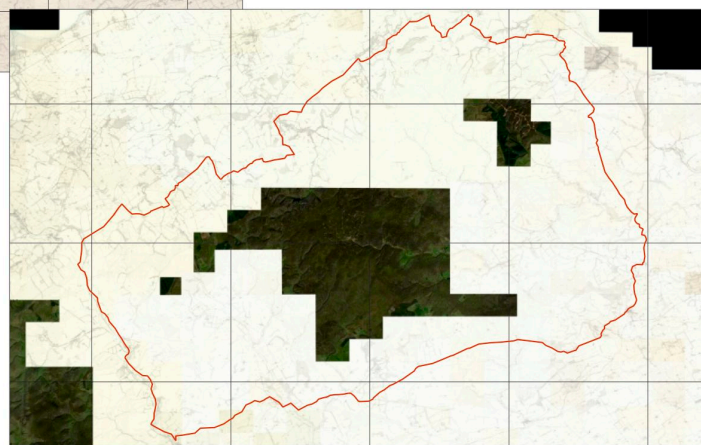
Bing and Google Aerial imagery
(2007 - 2016)



LiDAR for Scotland Phase III DTM 50cm
(2015 - 2019)



Ordnance Survey. Six-inch to the mile
Surveyed: 1853



Ordnance Survey, 25 inch to the mile
Surveyed: 1892

Figure 2: Resource coverage

Every site was to be annotated with a pre-agreed system of (Zone Number)_(Site Number in that Zone)_(designation of whether found on (M)ap (K)nown (U)nsure (L)iDAR) _ Initials of individual. This same code was used in both the mapping and the individual zone excel spreadsheets.

Using a GIS system, each square was examined first in Google Aerial, then again with Bing Aerial, simultaneously the NLS website showing the 1st or 2nd Edition for the same area was examined (at both 6" to the mile and 25" to the mile). This allowed the simultaneous collection of both currently visible sites (K)nown and sites which were only recorded on earlier OS mapping (M)ap. Some preferred searching the OS site first, and then transferring the known sites onto the mapping system – though this did involve issues in translating the coordinates from OS to Lat/Lng.

The use of hillshaded LiDAR data from the Scottish Govt allowed a final layer for visual survey though it required additional knowledge to download and use the data in GIS, using the QGIS for Archaeologists Guide (Streatfeild-James 2020: 32). In total 38 new sites were added using this technology being invisible in the upland environment especially. The earlier OS surveyors would have been unaware of the presence of turf sheepfolds lying in thick ground cover, meaning they would not be mapped. Aerial imaging also had difficulty in showing these sites (Figure 3). Sliding transparency on the NLS mapping allowed comparison of a location using Bingmaps and this could often be correlated on the aerial imaging system.

For many team members the process became more efficient as time went on, collecting data once, rather than returning to the various data sources – in addition, some additional data workflows were required if using only Google Earth, while not if using a GIS system where a variety of backmaps could be deployed.

It was acknowledged that the spreadsheet was best updated for every new site, as this prevented having to re-find the site and add details such as toponymic location, size, type or material. OS coordinates were entered either manually or with data capture, however it became clear that this could be added during the data processing phase using a GIS calculated field for these to be auto generated and then inserted into the spreadsheet. This would consequently reduce human error in entering long strings of numbers. Cross referencing with known sites and monuments was undertaken after data collection, to minimise the multiple data source checks into a single event, and also to preclude any unconscious bias while recording, with it better collect every potential enclosure then discard non sheepfold related or duplicate sites (where the team member had strayed into the adjacent zone).

The result was a spreadsheet list and a zone shpfile or KML of points on each site or suspected site, referenced with the unique reference number for each designated area.

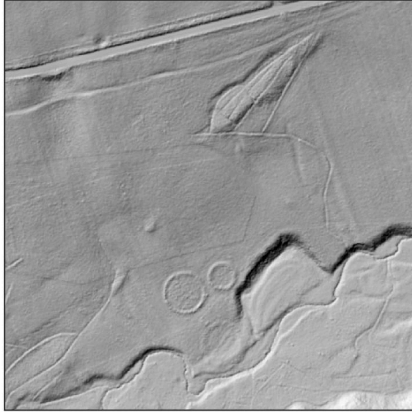
Data processing

All of these sites were then collated into a single spreadsheet list and point shp file, where standardisation of terminologies could be examined and any duplicated or uncertain sites culled from the final list.

A single team member using 2 screens was able to look at each site in turn and using a standard typology, that had been agreed on previously; assign a type, material and shape to each identified feature; check size if missing; and place in the designated layer of Visible only on a Map; Visible on an Aerial, Visible only on LiDAR; and Removed from list (either as another site type or because of duplication).

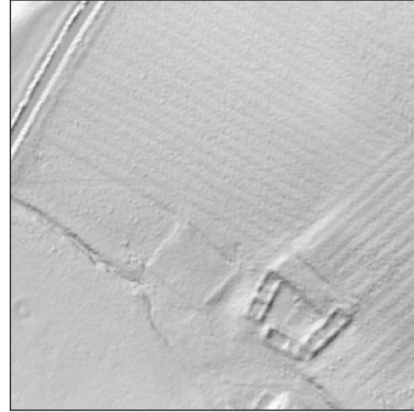
The final list of located features was 860, out of 1035 recorded after 175 were removed. The results were then assigned a Unique ID (1-860) and this was used to create a linked GIS dataset that could be queried and categorised for examination. Using GoogleDrive,

Site: 448 363293 664516

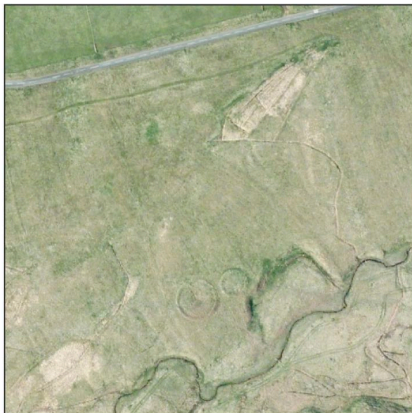
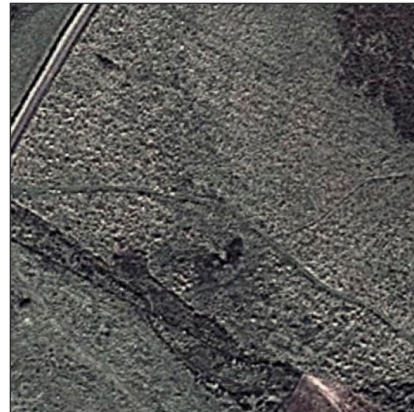


Lidar 50cm

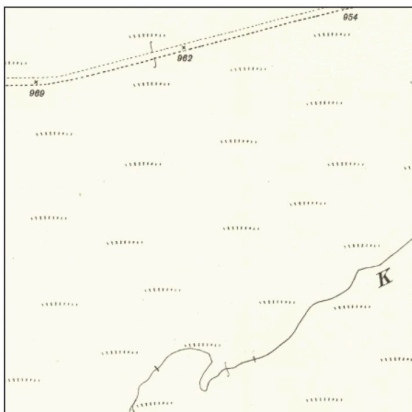
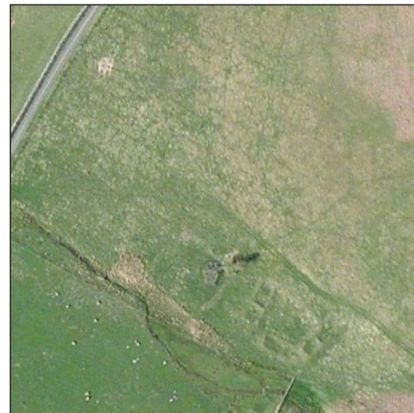
Site 292 351420 655456



Google Aerial



Bing Aerial



25" to Mile OS

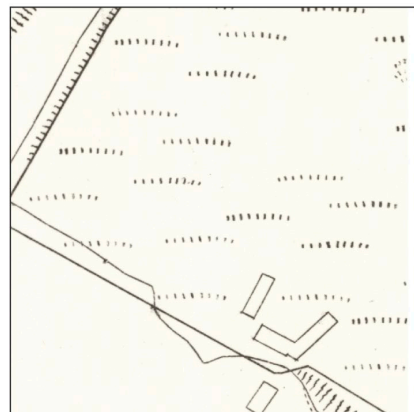
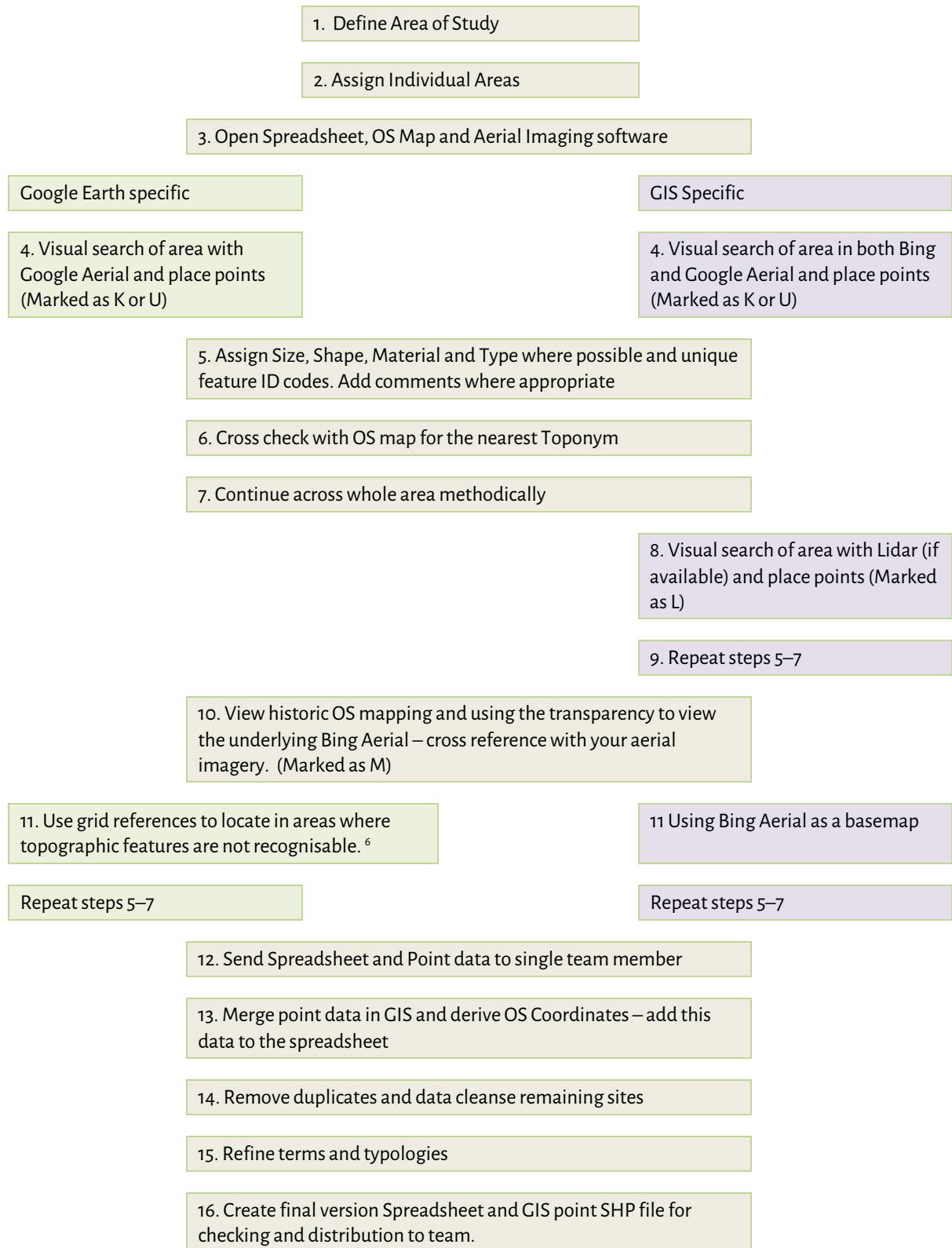


Figure 3: Examples of remote resources variability in visibility

the team was able to share this data as well as edit documents, spreadsheets and illustrations, in order to maintain consistency.

The simplified process workflow:



⁶ <https://maps.nls.uk/ten-things/#explorecoordinates>

Geospatial Analyses

Cursory geospatial processing and analysis was undertaken to yield information about the data collected and create figures to best demonstrate the data collected:

- Figures 1–7 were generated using QGIS, demonstrating both the area of interest and various distributions of collected data (both in total and by features of interest).
- Identifying topographic influences on sheepfold location: Figures 10, 11.1, and 11.2 were generated using ArcGIS 10.5, demonstrating correlations between individual vector data points (demonstrating sheepfold locations) and elevation/topographic raster data (demonstrated by various colours correlating to elevations). The ‘identify’ tool was used to identify values for “highest elevation” and “higher elevation” limits (e.g. highest point) for higher areas and exceptional points and to confirm values for “lower elevation” preferred limits.
- Identifying proximal influences on sheepfold location: ArcGIS 10.5 was used to select sites within Grid 3; this data was generated and converted (using the “conversion tool”) to Microsoft Excel for analysis. This data was collected using a Microsoft PowerShell script to group like phrases and words together from the “other comments” section.

Toponomastic Etymology Analysis

Nearest toponyms were collated from the data, with over 400 place names identified, many of which had further descriptive elements, such as Burn, Cleugh, Knowe, Mains, Rig, Water and Woods (sometimes in combination) as a variation.

Sources for analysis included the late nineteenth century Ordnance Survey Place Names Book for Berwickshire 1856-1858; East Lothian 1853-1854; Midlothian 1852-1853 and West Lothian 1855-1859. These, in conjunction with research carried out by The Leverhulme Trust through the University of Glasgow, *Recovering the Earliest English Language in Scotland: Evidence from place-names* (2016-2019) offered the most thorough and seemingly accurate appraisal of the area. However, many of the smallest or most rural places were not included and entries more often only referred to the geography and social history of the place, rather than the origin of the name.

One of the first sources used in this research was John Milne’s *Gaelic Place Names of the Lothians* (Educational Company Ltd, 1923) a text which translated many of the place names as relating to ‘folds’; however the number of derivations he associated with sheep and sheepfolds was often contradicted by other sources, such as May G. Williamson’s *The Non-Celtic Place-Names of the Scottish Border Counties* (University of Edinburgh, 1942) and Norman Dixon’s *The Place Names of the Midlothian* (University of Edinburgh May 1947). Whilst many of the later sources often cross referenced each other, Milne’s research is never referred to, calling into question its reliability.

English, Gaelic, Norse and Scots influences on the language of the borders added further opposing views on the etymology of many place names. Contradictory meanings were found by comparing Ordnance Survey’s online glossary, *The Origins of Place Names in Britain*, with A. G. James and S. Taylor’s analysis of A. Watson and E. J. Basden’s *Index of Celtic and Other Elements in W.J. Watson’s The History of the Celtic Place-names of Scotland*, as well as the University of Glasgow’s website *Scots Words and Place Names* and resources on the Scottish Place Names Society website. Research through these lead to an article by Fellows-Jenson, *Scandinavians in Southern Scotland* and A Topographical Dictionary of Scotland: From Abbey to Jura Samuel Lewis, (S. Lewis and Co. 1846).

In presenting the findings of this research, place names in the data with no reference to sheep farming or sheep folds in any of the sources have been omitted.

Limitations

LiDAR data was not available for all gridded areas (in part or whole). As such, some areas may have more LiDAR-confirmed points than others.

Livestock enclosures and pens could not be discounted from the dataset as they could reasonably have been used as sheepfolds or otherwise to hold sheep. To exclude them would exclude a significant portion of the overall dataset (X out of Y sites; Z%); without being able to actively exclude them from sheep use, their exclusion could dramatically misrepresent the distribution of sheepfolds across the Lammermuir area. At this stage, it is reasonable to surmise (given the saturation of sheep in the area) that these sites were (at least in part) used to care for sheep.

Proximal feature analysis was not consistently recorded across all gridded areas. Geospatial analysis of Grid 3 sheepfold data is intended to be representative to demonstrate observable trends among sheepfolds generally. The Grid 3 dataset was used to produce proximal information due to its dataset size and consistent recording of proximal features.

Although the use of theissen polygons within GIS could theoretically generate a voronoi diagram to suggest potential grazing areas surrounding sheepfolds, there are several reasons this method was not chosen for this project:

- Trending clusters of sheepfolds could dramatically impact area projections within a given polygonal area
- The presence of folds with multiple purposes (perhaps as sheep washes, livestock enclosures, etc) could suggest variable use, influencing datasets.

RESULTS AND DISCUSSIONS

Overall Data Results

In total, 1035 potential sites were recorded across the search area. Once misattributed or duplicated sites were removed, a total of 860 sites were identified. Of these, the most common features were sheepfolds, with circular stone examples being most prevalent (169 examples apparent), closely followed by circular turf sheepfolds (120 examples). Two examples of spectacle sheepfolds were apparent within a search area. A further 34 examples of sheepfolds which did not match this description (Sheepfold - other), were also discovered.

In addition to this, 28 sheep stells were identified, with a variety of configurations (these were usually comprised of either one or two curved/straight walls). Y-shape sheep stells were by far the most popular, representing a total of 11 examples. A small number (34) of sheep dips, or washes, were also found within the area along with 20 Sheep House structures and a further 6 Sheep Shelters.

Sheep enclosures, field enclosures (Rectangular and Corner), Livestock Enclosures and Livestock pens represent 413 of the examples listed, while 27 farmsteads were similarly found within the search area.

Table of Results. See Appendix 1 for full list of sites.

Type	Number
Total Number of sites recorded.	1035
Number of sites after data cleansing	860
Sheepfold (Circular Turf)	120
Sheepfold (Circular Stone)	169
Sheep Enclosure (Complex)	117
Sheep Dip/ Wash	34
Sheep Shelter (Structure)	6
Sheep Houses	20
Sheep Stell (C-shape)	9
Sheep Stell (T-shape)	2
Sheep Stell (V-shape)	1
Sheep Stell (X-shape)	1
Sheep Stell (Y-shape)	11
Sheep Stell (Wall)	4
Spectacle Fold	2
Keyhole Fold	7
Sheepfold (Other)	34
Field Enclosure (Rectangular)	97
Field Enclosure (Corner)	60
Livestock Enclosure	97
Livestock Pen	42
Farmsteads	27

Distribution and Analysis of Raw Data

Once all sites had been mapped and marked according to their typology, it became apparent that several trends could be observed, regarding the sites' distribution. While stone and turf-walled circular sheepfolds were generally found throughout the search area (although circular stone sheepfolds did seem to be more common towards the centre of this area), this is not the case for all of the sites recorded. For example, sheep stells (X, Y, and C forms) were found to be in a cluster in the South Eastern part of the search area, with only a few examples in existence outside of this area. Similarly, most of the sheep houses identified during the course of the project were located towards the north west of the project area, in Midlothian and East Lothian. Livestock enclosures and pens were found to be most prevalent in the area north of Lauder, close to the road now known as the A68.

An unexpected discovery

In addition to the frequency, typology and distribution of sites relating to sheep farming, the project also potentially yielded another surprising, and yet no less significant result: the discovery of a possible new hillfort (NT 78054 56038).

Bingmaps (2020)



Bingmaps (2012)



A VISUAL TYPOLOGY

Sheepfold (Circular Stone)

Stone-walled, circular sheepfolds, comprising no internal enclosures. By far the most common example found throughout the whole of the search area.



#11 – (Apple Maps)



#199 – (Apple Maps)



#778 – (Apple Maps)

Sheepfold (Circular Turf)

Turf-walled, circular sheepfolds, comprising no internal enclosures. One of the most common examples found throughout the whole of the search area.



#319 – (Bing Maps)



#404 – (Bing Maps)



#651 – (Bing Maps)

Keyhole Fold

Circular Sheepfolds, with additional spokes/associated enclosures. Uncommon, but with a variety of forms. Appear to be stone-built.



#255 – (Apple Maps)



#564 – (Apple Maps)



#830 – (Apple Maps)

Spectacle Fold

Only two extant examples found within the search area. Each Comprise two stone-built circular sheepfolds, joined by a single stone wall. Marked as “spectacle fold” on 25” OS map.



#575 – (Bing Maps)



#323 – (Bing Maps)

Sheepfold (Other)

Sheepfolds which, although identified, seem to be largely unique in terms of form/construction. Include both regular rectilinear and irregular shapes as well as turf and stone walls. Internal enclosures may be found in some examples.



#269 – (Apple Maps)



#482 – (Google Earth)



#624 – (Bing Maps)

Field Enclosure (Rectangular)

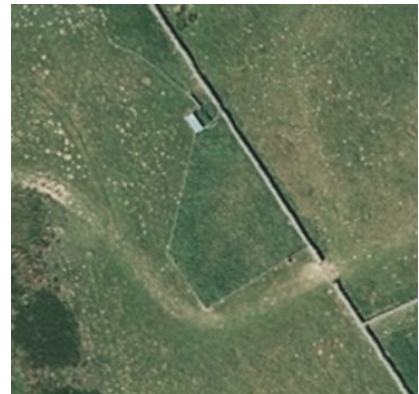
Rectangular or irregular 4-sided polygon enclosure, usually constructed along field boundary walls. Found throughout the search area.



#45 – (Apple Maps)



#239 – (Apple Maps)



#851 – (Apple Maps)

Field Enclosure (Corner)

Roughly triangle-shaped enclosures, usually constructed at the corners of field boundary walls. Often appear to be close to farmsteads or roads. Found throughout the search area.



#65 – (Apple Maps)



#207 – (Apple Maps)



#592 – (Apple Maps)

Sheep Stell - T

“T”-shaped sheep stell, comprising two intersecting stone walls. Only two known extant examples, placed within 150m of each other.



#655 – (Google Earth)



#656 – (Google Earth)

Sheep Stell - Y

Rectangular or irregular 4-sided polygon enclosure, usually constructed along field boundary walls. Found throughout the search area.



#263 – (Apple Maps)



#544 – (Apple Maps)



#679 – (Apple Maps)

Sheep Stell - C

“C”-shaped sheep stell, comprising a singular stone wall, constructed to form a penannular shape. Examples are relatively rare, found only in sections 3, 5 and 8 within the search area.



#353 – (Apple Maps)



#558 – (Apple Maps)



#793 – (Apple Maps)

Sheep Stell - X

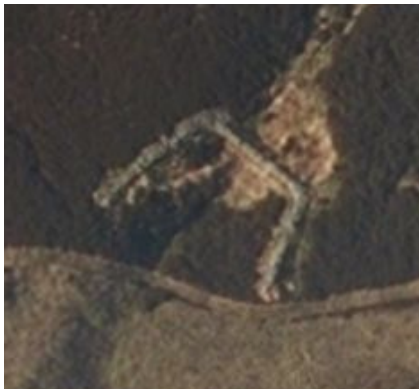
“X”-shaped sheep stell, comprising two bisecting stone walls at an angle of c. 90 degrees. Only one example apparent in search area.



#603 – (Google Earth)

Sheep Stell - V

“V”-shaped sheep stell, comprising three stone walls, of which two radiate out from the ends of the central wall, at an angle of c. 135 degrees to form a “V” or “U” Shape. Only one example apparent in search area.



#532 – (Apple Maps)

Sheep Stell - wall

Miscellaneous sheep stell walls, in various configurations. Often associated with other sheepfold structures. Uncommon, but found throughout the search area.



#28 – (Apple Maps)



#827 – (Apple Maps)

Sheep Dip/Sheep Wash

Rectilinear structures, likely sheep dips or sheep washes. Can be associated with other features, or constructed independently. Seem to be most common in areas 1, 3 and 8.



#68 – (Apple Maps)



#376 – (Apple Maps)



#791 – (Apple Maps)

Sheep Enclosure (Complex)

Miscellaneous sheep farming structures comprising multiple enclosures. Often closely associated with farmsteads.



#68 – (Apple Maps)



#418 – (Apple Maps)



#157 – (Apple Maps)

Sheep House

Historical and modern sheep houses, in which livestock would be kept during inclement weather. Includes earthwork remains, buildings still in use and those whose use has changed over time.



#48 – (Apple Maps)



#453 – (Apple Maps)



#798 – (Apple Maps)

Sheep Shelter (Structure)

Simple structures, often with curved walls and apparent external enclosures. Very few examples apparent.



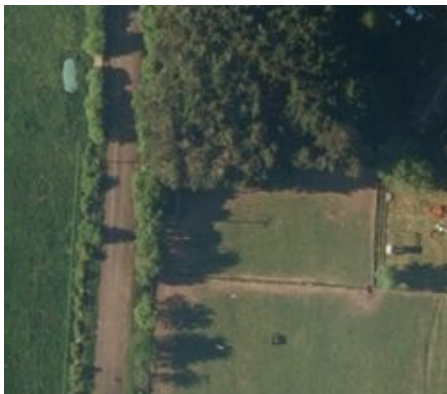
#781 – (Apple Maps)



#195 – (Apple Maps)

Livestock Enclosure

Miscellaneous walled enclosures, likely designed to hold livestock. No definitive proof that these are associated with sheep, as opposed to other animals. Often closely associated with farmsteads.



#192 – (Apple Maps)



#591 – (Apple Maps)



#845 – (Apple Maps)

Livestock Pen

Square livestock enclosures. Apparent in a range of sizes, with lengths/widths varying from less than 10m to over 100m. Relatively uncommon within the search area, but found mostly within sections 2 and 3. Often found within boundaries of fields.



#216 – (Apple Maps)



#409 – (Apple Maps)



#415 – (Apple Maps)

Farmstead

Remains of largely post medieval farmhouses and associated buildings, where apparent. Found throughout the search area.



#422 – (Apple Maps)



#645 – (Apple Maps)



#745 – (Apple Maps)

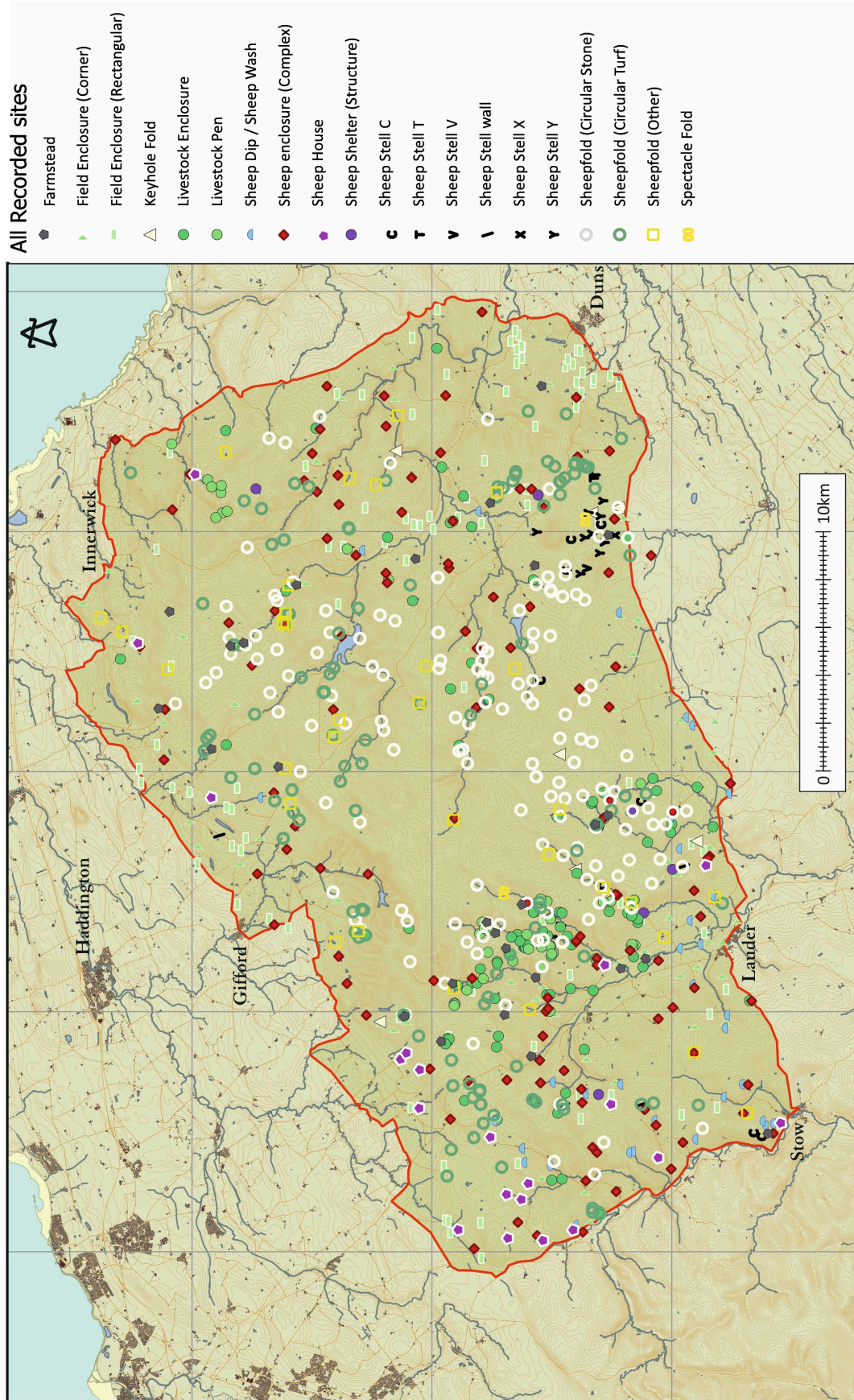


Figure 4: All recorded sites within the survey area

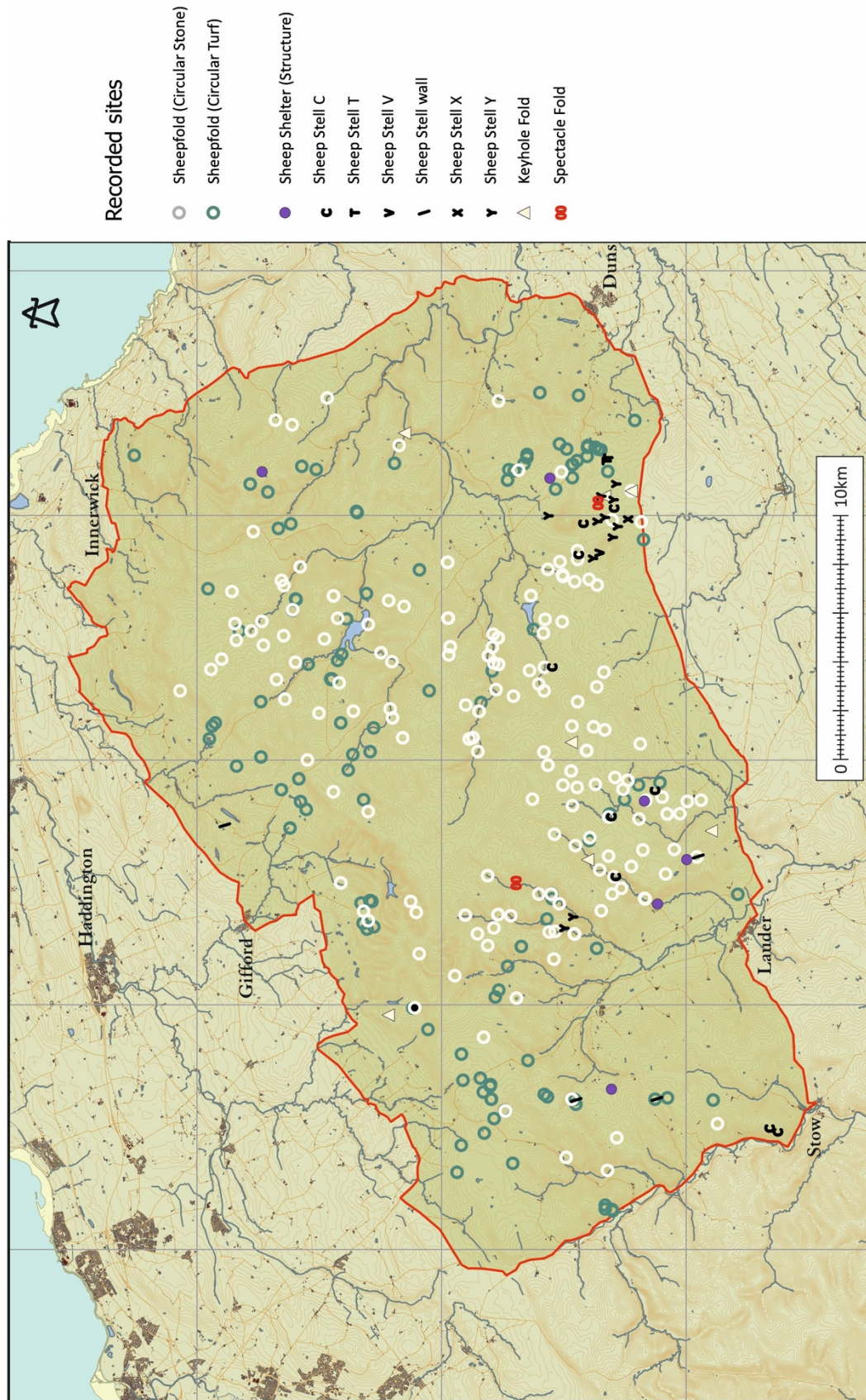


Figure 5: Circular sheepfolds and stells

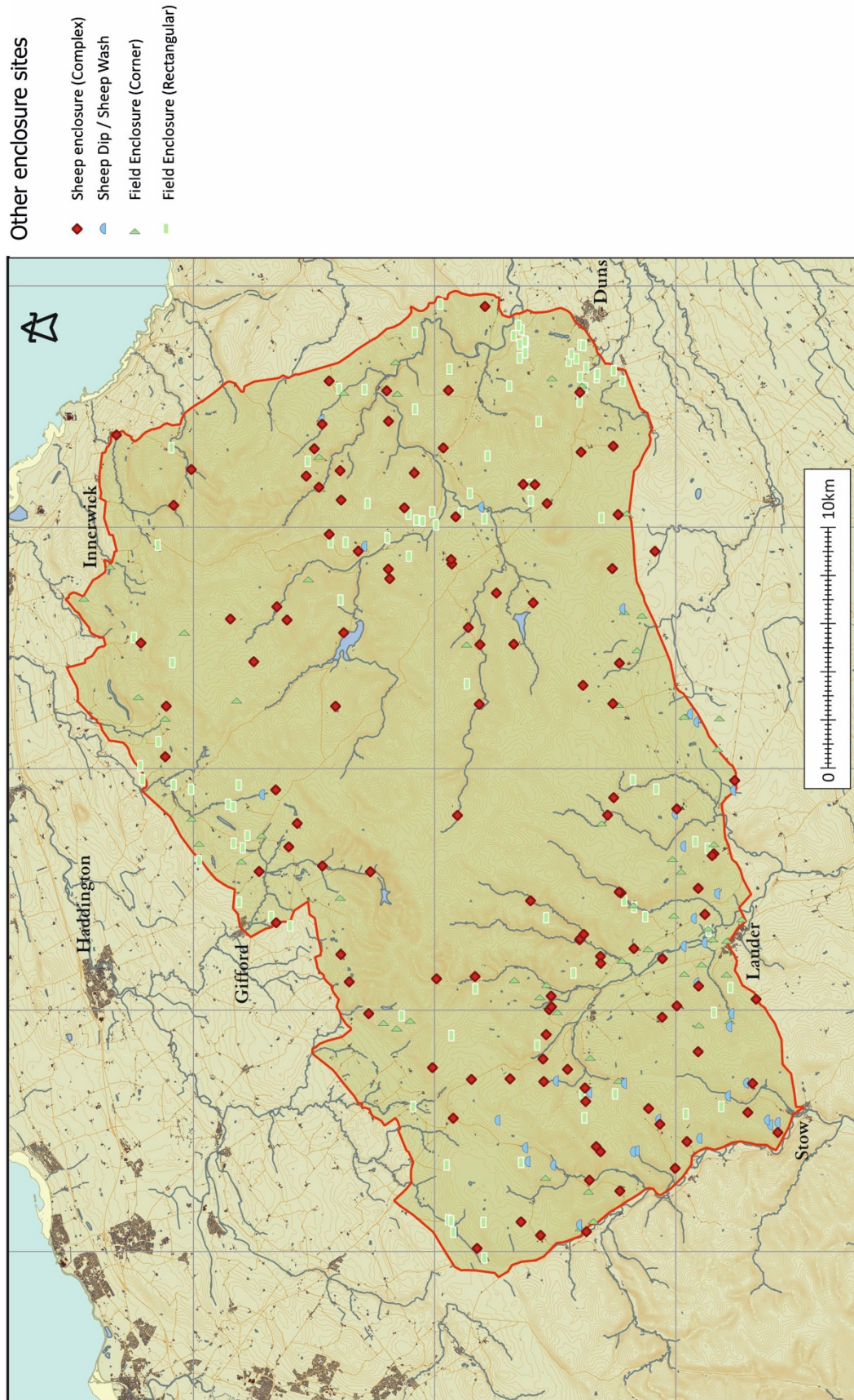


Figure 6: Sheepfolds (multiple internal enclosures), field enclosures, and folds for dipping and washing

Farms and sheephouses

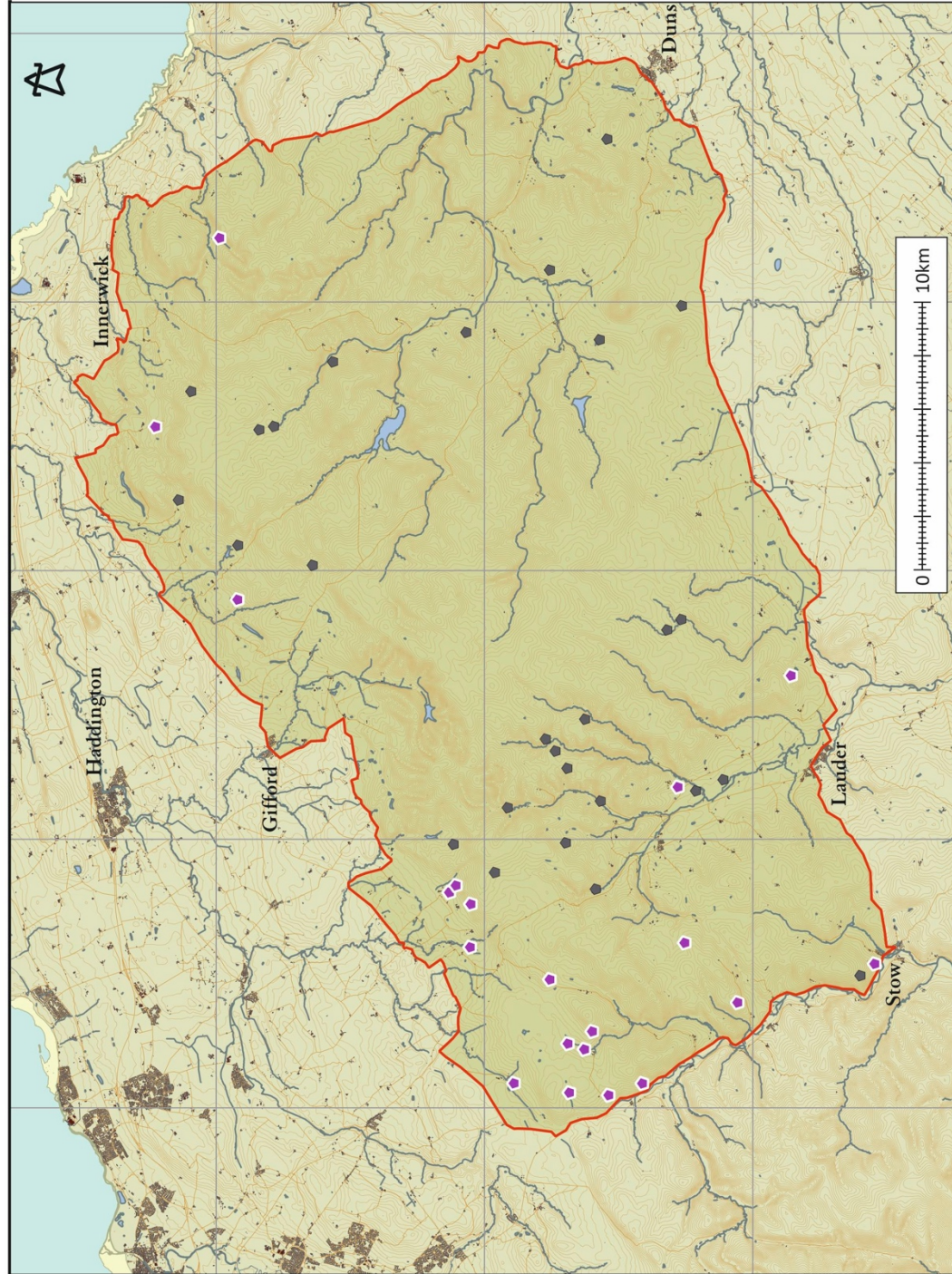


Figure 7: Recorded farmsteads and sheephouses

POTENTIAL FOR APPLICATION OF LIDAR

Brief exploration of the transition in agricultural practice in the Lammermuirs using evidence of superimposed sheepfolds and ridge and furrow

Before launching into some of the patterns revealed from the present survey, it is worth briefly considering the development of agriculture and sheep farming in the study area and southern Scotland as a whole, as this has a significant impact on the landscape of today.

Background history of sheep farming in the Lammermuirs

Sheep husbandry has a long history in the Lammermuirs, particularly in the Border counties, with evidence dating from at least later prehistory and the Anglian settlement (e.g. Trow-Smith 1967: 16; Robson 1977: 449). The first major chronicled expansion is linked to the great monastic land management practices of the large Border Abbeys from the twelfth century, while the access to both national and international markets in the wake of the Union of the Crowns in 1603 was the main driving force behind the development of profitable commercialised sheep husbandry on a large scale in the area (e.g. Robson 1977: 30-32, chapter 10, esp. 404-27; Baldwin 1985: 40).

Despite this prolonged association with the sheep rearing in the south of Scotland, including the Lammermuirs, most of the surviving features and structures visible today are the result of considerably shorter period of intense agricultural developments, particularly from the mid eighteenth-early nineteenth century, sometimes referred to as 'the agricultural revolution' (e.g. Millman 1975: 94; Cheape 1983: 79, 80). These advances were partially stimulated by the Napoleonic Wars (1793-1815), with increased demand and therefore prices for grain, as well as the general population increase and greater wealth generated by the new industry and trade during the period between 1760 and 1820 (e.g. Cheape 1983: 96-7; Smout 2012: 133-4).

These developments were especially pronounced in the fertile areas of the southeast Scotland, notably the Lothians, which were at the forefront of early experiments with crop rotation, fertilisation, enclosure and specialised farm machinery, notably the improved plough or threshing machine (e.g. NSA 1845, vol II: 229-30; Steven 1995: 119-48; Whitfield 2000: 11); with the earliest enclosures being employed in the county of East Lothian in late seventeenth century (Baldwin 1985: 40; Whyte & Whyte 1987: 126).

This main period of intensified agricultural developments drew on earlier experiments of the enlightened individuals, mainly educated landowners and gentlemen farmers, publishing their findings in specialised magazines or books on the subject of improvement of agriculture (Naismith 1989: 26-27; Steven 1995: 119; Smout 2012), including the sheep husbandry (e.g. Little 1815; Napier 1822; Fairbairn 1823; Scott-Burn 1877: 64-74). The changes or the need for these were also vividly captured in the first ever nationwide survey of Scotland: The 'Old' Statistical Account of Scotland, instigated by one such enlightened and improving landowner, Sir John Sinclair and the subsequent New Statistical Account (NSA 1845), with the answers supplied by Parish clergymen, who made enthusiastic reports about agricultural improvements (or the lack of) in their respective Parishes or counties (Dodgshon 1976: 558; Steven 1995: 1-3, 138).

The Enlightenment-driven scientific advancements clearly impacted the sheep industry to a significant degree, as evident from a number of specialised literature on sheep husbandry (e.g. Little 1815; Napier 1822; Fairbairn 1823; Scott-Burn 1877: 64-74; also summaries in Dodgshon 1976: 555, 559; Robson 1977: 188-205, 449-50) or the above noted statistical accounts: specifically in relation to sheep breeding and related improving practices, see for instance the accounts of Parishes of Yarrow, Ladykirk,

Tweedsmuir or Cockburnspath in the Borders (OSA 1793, vol VII: 502-3; vol VIII: 72-3, 87-8; 1794, vol XIII: 223-6).

The Napoleonic Wars and other factors cited above had some short-term effect on the sheep rearing industry in the area of Lammermuir and the Borders, in as much as the farmers endeavoured to grow more grain in marginal lands, as a response to increased grain prices, to the detriment of sheep pasture (e.g. Fairbairn 1823: 2-10; Dodgshon 1976: 558-9). Nonetheless, these were on the whole temporary efforts as the people responded to specific economic opportunities. The development of sheep farming was a protracted process, influenced by variable socio-economic conditions—such as market access, general trade conditions and, from the latter eighteenth century, the establishment of wool manufacturing industry in the Borders area (e.g. Dodgshon 1976: 555, 559; Robson 1977: 421-27, 429-32).

As seen, enclosure of fields and livestock formed one of the key changes of the agricultural development in Scotland described above. These also form the most visible elements of these improvements within present landscape, together with surviving cultivation marks/ridges of pre-improvement periods (cf Halliday 2001: 10). Available suite of modern technology, notably aerial survey and LiDAR, together with past records, such as historic pre-improvement and post-improvement maps can be used to reconstruct these changes (cf Millman 1975: 94, 104, 117-118).

The transformation between the old style of cultivation, i.e. the ridge and furrow, as part of runrig system of regularly fertilised infield and less maintained outfield (e.g. Dixon 1994: 30, 32; Shaw 1994: 111) and the large scale enclosure is vividly captured on Roy's mid-eighteenth century survey (Roy 1747-55; Figure 8). For instance, it is estimated that around one third of the county of East Lothian has been enclosed by the time of Roy's survey (Whyte & Whyte 1987: 126), which serves as a record of this significant transformation accompanied by contemporary descriptions (e.g. Napier 1822: 9), notably the above noted OSA accounts, which were remarkably well timed to capture these irrevocable changes (Steven 1995: 119; Millman 1975: 89).

Figure 8 : Roy's map of 1755 (1747–1755) showing area around Burnhouse and Threeburnford, overlain on a recent aerial view; capturing the changes from the 'ridge and furrow' to enclosed field and pasture



The pre-improvement type of agriculture, referred to as 'rig (ridge) and furrow', has been in Scotland (and indeed beyond) practiced intensively since at least the Medieval period and significantly earlier, with prehistoric cord rigs, although rarely surviving in

original form or securely dated, suggested as originating in later prehistory or even earlier (e.g. Baldwin 1985: 40–41: 76; RCAHMS 1997: 29, 44; Halliday 2001: 11–12). These cultivation marks rarely survive in lowland location, courtesy of subsequent intensified agricultural improvements (Baldwin 1985: 41; RCAHMS 1997: 41; Barber 2001: 2; Halliday 2001: 10), but in the upland locations they point to a once significantly farmed marginal landscape, which is now exclusively used for sheep pasture.

Applications of LiDAR and landscape analysis

Following from this point, the intention of this brief section is to draw attention to one notable land-use pattern observed as part of the project and to suggest future research avenues regarding the history of sheep farming in the area. Using a particular example of very recognisable circular sheepfolds (stells), characteristic of the structural record pertaining to sheep farming in the area and beyond, the present survey, utilising available satellite imagery and LiDAR resources, recorded some 290 structures of this type; with 120 constructed of turf and 169 of stone as well as two double circular stone structures known as spectacle folds.

While carrying out the research and utilising the newly available LiDAR for the area, it was noticeable that where such circular sheep enclosures, whether stone or turf, were found in association with tracts of arable plots of ridge and furrows, the sheepfolds were always superimposed on top of existing cultivation (or impacted these) and therefore unequivocally stratigraphically later in the overall sequence. Perhaps unsurprisingly, the suggestion of the greater antiquity for the arable cultivation as opposed to the stock enclosures, which were on the whole introduced on a larger scale from the later eighteenth century (Robson 1977; RCAHMS 1997: 31) is not a new notion and has been proposed by prior similarly focused studies (e.g. RCAHMS 1997: 29–33, 37), which utilised aerial photography. However, this particular chronological distinction between cultivation remains and pastoral structures was only possible through the use of the latest LiDAR imagery (Figures 9.1–9.3) and suggests future possibilities of using LiDAR to date superimposed sites in general. At the same time, the use of combined LiDAR and aerial survey methodology suggests an enhanced way for carrying out a large scale landscape surveys and, in the absence of excavation, may significantly advance the study and interpretation of archaeological remains in often inaccessible areas, especially the vast tracts of moorland, where the particular type of vegetation and ground conditions are not conducive for producing archaeologically visible evidence (c.f. Halliday 2001: 11). Therefore this simple process of examining the landscape in a stratigraphic manner, confirms the historical accounts of replacement of earlier arable cultivation on upland marginal lands by more profitable and practical sheep husbandry, as frequently bemoaned in the statistical accounts (e.g. Dodgshon 1976: 558; Robson 1977: 181) and other historical sources of this crucial period: for instance in the Parish of Eskdalemuir (OSA 1794, vol XII: 608), Reverend William Brown suggested that:

‘In former times the inhabitants were much fonder of agriculture [arable] than they are at present...they ploughed twice as much as they do now. The reason of their leaving it off, was owing in part to the uncertainty of climate, but chiefly to the great demand in late years for sheep and wool. At present, there are about 200 acres in constant tillage. But if the demand for sheep and wool increase as it has done for some years past, it is probable that still fewer will be in use; for they think that, in many places, it either hurts the sheep walks, or might be of more advantage in affording them a retreat in times of storm.’

The superimposed agricultural elements of different phases described above represent only one of many examples of the future research potential pertaining to the history of sheep husbandry or the area of Lammermuirs as a unique archaeologically rich landscape. There is a great deal of work that can be carried out in relation to these, including: examining the correlation between multiple other types of enclosures and specific usage, as well as their relationship to the ridge and furrow; mapping the

potential for crop yields in these marginal areas and the association between sheep rearing/numbers and earlier agricultural practices. It is clear on a cursory examination of the area that the Lammermuirs preserve a landscape which can be used to understand the practice of livestock and from at least the medieval period to the present.

Landscape stratigraphy with circular sheepfolds over earlier ridge and furrow

Figure 9.1: Lidar imagery of Enclosure 573

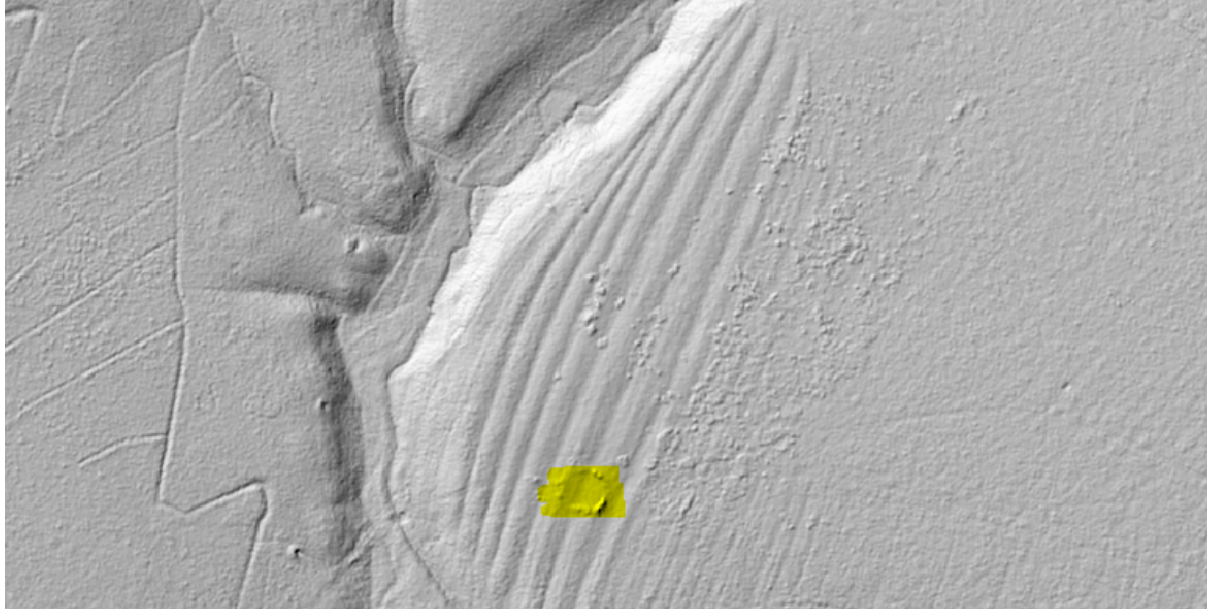


Figure 9.2: Lidar imagery of Enclosure 635

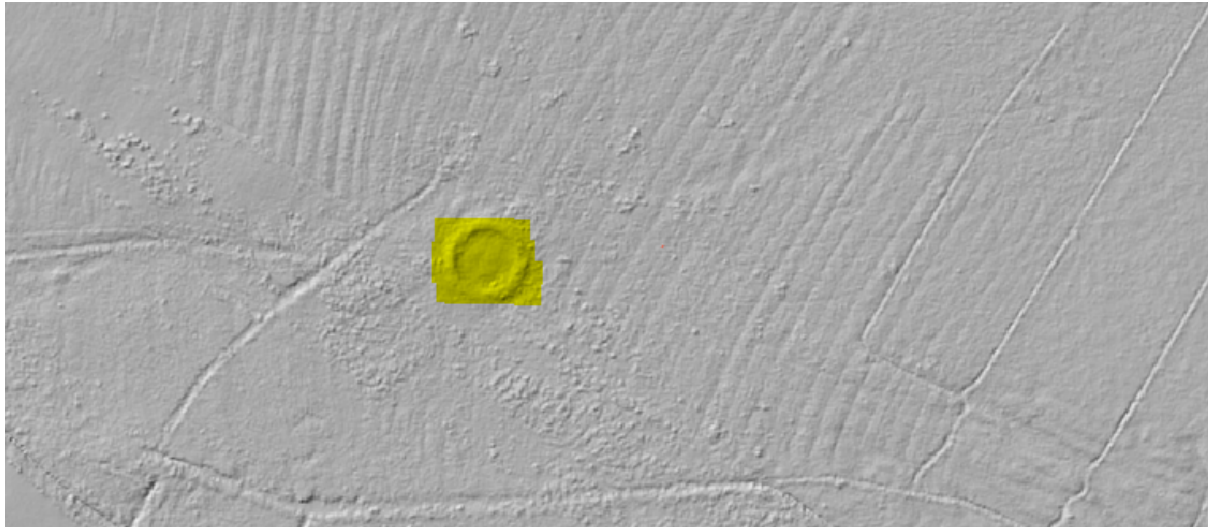
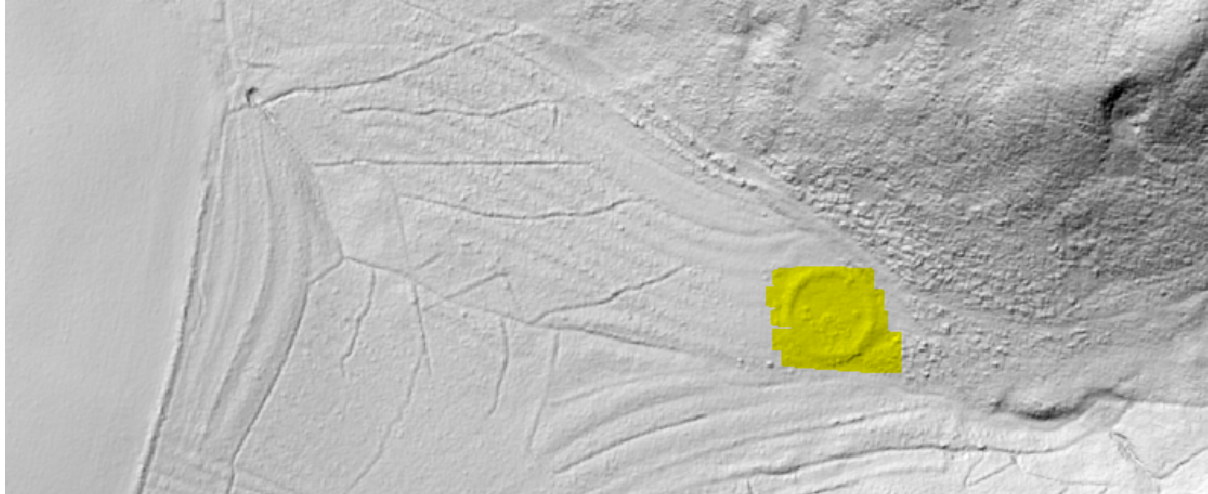


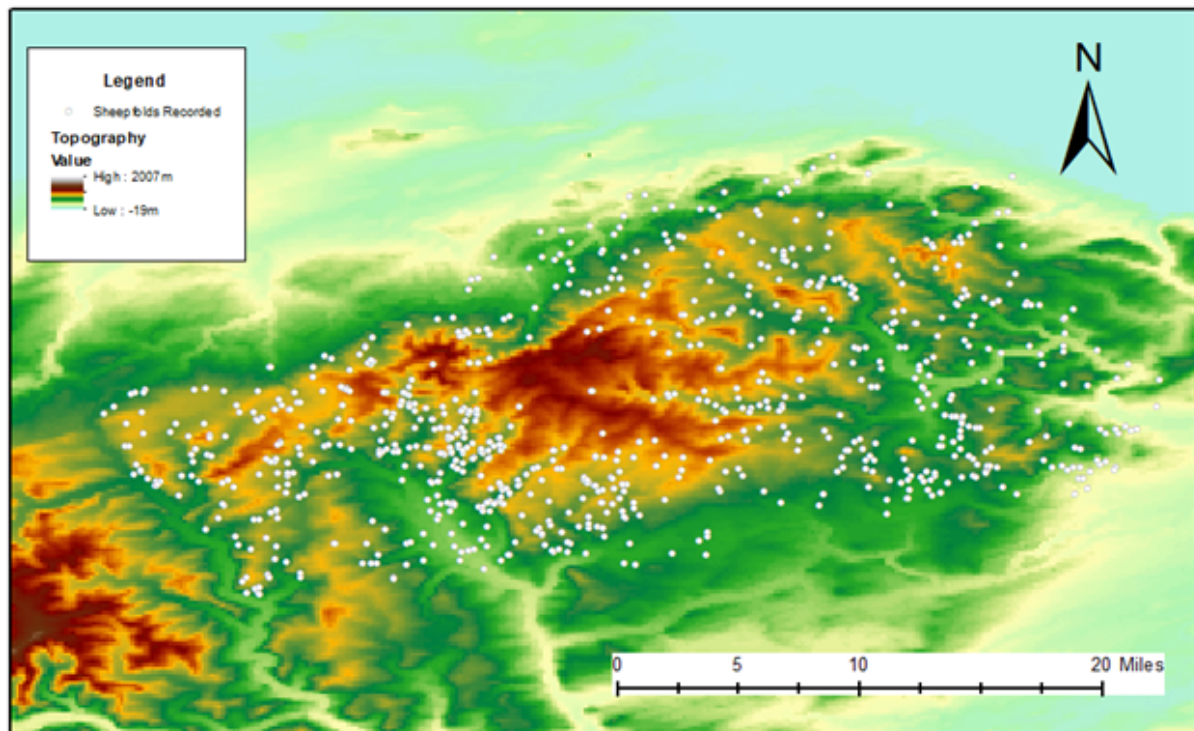
Figure 9.3: Lidar imagery of Enclosure 407



Topographic influences on sheepfold location

The observable trends presented by contrasting data collected and raster elevation data (seen in Figure 10) suggest a preference for building sheepfolds and similar enclosures in lower topographic levels (under 330m). There are, however, a few exceptions to this; although exceptional points are in higher areas in contrast to the overall dataset, they still only skirt higher elevation areas (never exceeding 400m) and continue to avoid the highest areas. This preference toward construction at lower elevations could reflect concerns surrounding inaccessibility and the negative effects of lower temperatures (like heavier snowfall) during winter months; sheep and humans alike may also generally struggle to perambulate higher elevated areas in contrast to lower elevation areas.

Figure 10: Sheepfold placement trends demonstrate preference for less elevated areas



Likewise, the apparent preference for lower elevations could also reflect additional preferences for sheepfold proximity to other features, such as water, which tend to

occur more frequently in lower areas. Although wooded areas presumably grow better in lower elevations (due to more workable soil, better temperatures, etc), their presence in these areas may again reflect this general preference toward working within lower elevations. Unlike other features (such as water or roadways), proximity to wooded areas is likely less of an influential factor than the observed elevation preference.

Figure 11.1: Exceptional sheepfolds in Grid 1 (A) and 3 (B) skirting higher elevation areas.

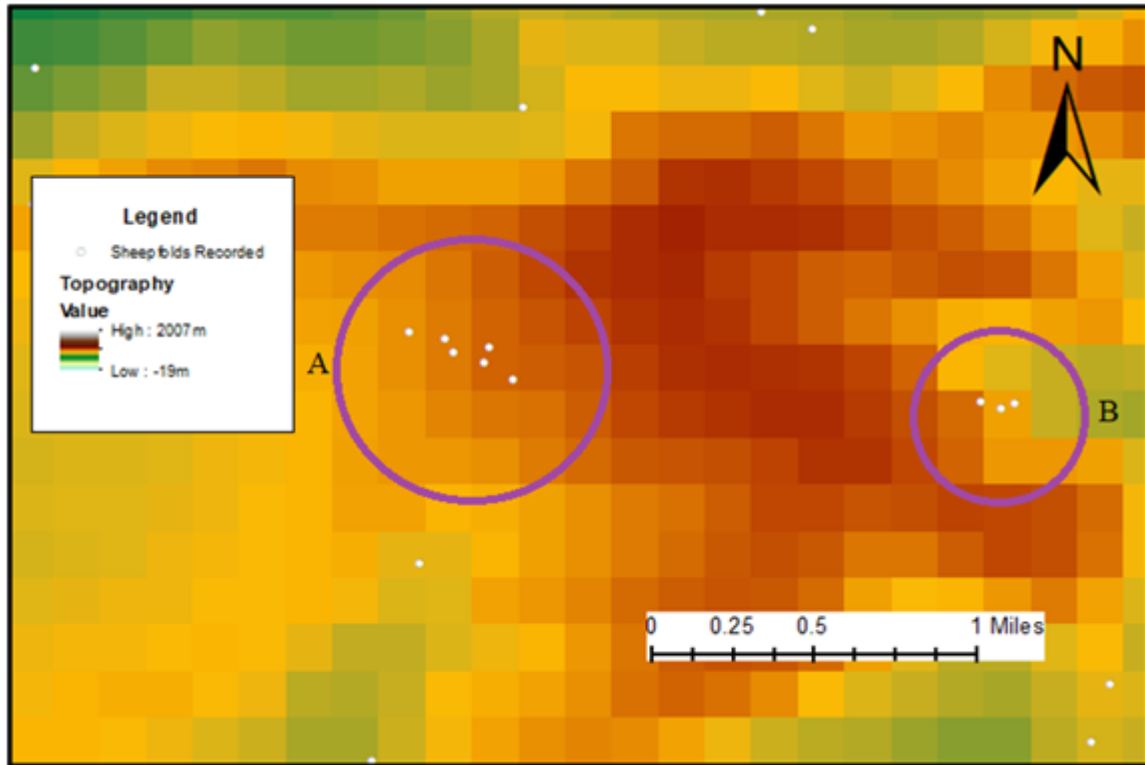
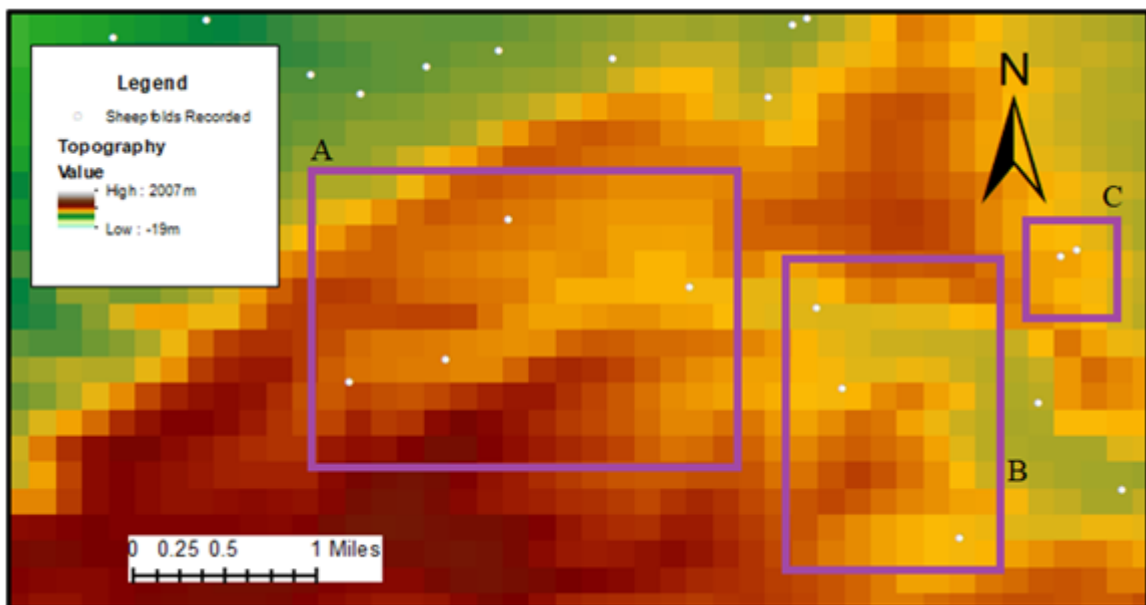


Figure 11.2: Exceptional sheepfolds in Grid 2 (A) and 4 (B, C) skirting higher elevation areas



Proximal feature influences on sheepfold location

Representing 25% of the entire dataset (217 of 861), Grid 3 data recorded 217 probable sheepfolds; notably, only 26% (56 of 217) of these sheepfolds are previously recorded on an OS Map. The introduction of this new data allows for additional regional analysis surrounding the creation and use of sheepfolds within the Lammermuirs. Grid 3 was chosen for proximal feature analyses both because of the density of its dataset and the consistency of information surrounding proximal features recorded. Although proximal data information may vary across the Lammermuirs and individual Grid areas, this analysis is intended to be representative to further related discussion.

Grid 3 proximal feature data notes whether recorded sheepfolds are within 100m of any of observable features of interest; this distance was verified using the Google Earth measuring tool. Regularly recorded observable feature types include: water or waterways, woodland or plantation areas, roadways, pathways, and structures. The Grid 3 dataset revealed the following information about the possible influence of features:

- 56% (122 of 217) of the sheepfolds are proximal to a visible roadway or pathway.
- 36% (78 of 217) of the sheepfolds are proximal to water or a waterway.
- 28% (61 of 217) of the sheepfolds are proximal to wooded or plantation areas.
- 25% (54 of 217) of the sheepfolds are proximal to some form of standing structures.

The observable trends represented by this data suggest that accessibility (eg. proximity to roads or paths) is likely a dominant influence on sheepfold placement; this could also explain why so few sheepfolds are visible in higher hill areas (eg. lack of accessibility to those areas). Proximity to water also seems to have some influence on choice, but this could also be because waterways often act as natural barrier features to grazing areas. The presence of wooded areas and standing structures, although possibly influencing over one quarter of the points recorded, appears to have been less influential upon sheepfold placement than accessibility or proximity to water. Notably structure-related analysis did not include information surrounding sheepfolds which included structures within themselves, such as sheep shelters, houses, washes, etc.

PLACE NAMES OF THE LAMMERMUIRS

Place names referred to in the OS Name Book as inhabited by shepherds, but with no etymological link in the name include: **Boonsly**, **Bothwell Water** (Bothwell Farm being described as a large sheep farm), **Branslyhill**, **Friar's Nose**, **Glenburnie**, **Killpallet**, **Kippetlaw Burn**, **Makimrich**, **Salvandi**, meaning 'black little field' according to Milne (p.54), and **Zadlee** (also known as **Yadlee**). Place names referred to in the OS Name Book with specific reference to pasture, but again with no link to sheep or folds in the origin of the name include: **Broadshaw Rig**, **Carriage Law**, **Coral Rig**, **Dun Law**, **Elsie Cleugh**, **Gala Law**, **Halls Edge**, **Lodge Rig**, **Middle Hill**, **Middle Lea**, **Peat Law Priest's Pulpit**, **Several Rig**, **The Bank**, and **Yearn Gill** (all rough and/or heathy pasture); **Cadam Law**, **Moss Law** and **Willowcleugh Hill** (good pasturage); **Crichness** (large arable sheep farm); **Greenlaw Clump** (a place of good grazing), **Sled Hill** and **Tupknowes Cairn** (elevated portion of pasture land).

Dunbar Common is described as 'heathy pasture which belonged to the Town of Dunbar and retains the name being divided some time ago between the several proprietors in the Neighbourhood'. Similarly, **Kirkton Hill** is also 'a piece of common grazing attached to a kirkton'. The Leverhulme Trust research explains: the eponymous kirkton being the settlement, now largely gone, around the parish kirk of Channelkirk. The pastoral nature of the land is emphasised as late as the 1860s: 'a large farm (principally pasture) attached'. **Crystal Knowe**, described by Milne (p.79) as 'Slope of the little fold on the hill' with *crudhan* for small fold, is only referred to as having 'heathy pasture' in the OS Name Book. Likewise, Milne (p.37) attaches significance to **Hangingshaw** stating 'if *hanging* is an English word it means sloping or overhanging. If Gaelic... it represents *fhangan*, sheepfold. The OS Name Book, however, only recognises 'a large arable and sheep farm'. For **Soutra Hill** and **Soutra Mains**, Milne (p.57) believes 'Perhaps [it stands] for *Hath Siith*: 'fold where cows were milked'. The OS Name Book only gives a connection to 'chiefly rough pasture...on its summit is a sheep house'.

Some place names make reference to animals, such as **Ewelairs Hill**, described in the OS Name Books as 'affording good pasture for sheep'; *lair* 'denoted spots in which sheep or cows were accustomed to spend the night' (Dixon p.124), with Williamson (p.75) stating the word comes from Old English *leger*, 'a burial place, hills in the hollows of which the animals must have found shelter'. Although Milne suggests **Lamb Burn**, **Lamb Hill** and **Lamb Rig** only relates to *lamh*, Gaelic for hill, not sheep, other sources agree on a literal association. Similarly, while Milne translates **Mutton Slack** as *meadhon*, meaning middle (p.94), the OS Name Book describes it being 'well covered with short grass, excellent for fattening sheep which no doubt gave rise to the name'. There is disagreement with the origin of **Hog Hill**; only Dixon (p.45) links the word *hog* to young sheep. **Wedder Law**, **Wedderlie** and **Wether Law** all find their origins in the Old English word for ram, *weðer*, (Williamson p.155) or *wethers*, castrated rams. The word *ram* itself in place names is more complicated. Rammer Moss, although seen as *rath*, a fold, in Milne (p.98), it is connected to *ramna*, Scandinavian for raven in the OS Glossary and Williamson (p.163). Both **Rams Cleugh** and **Under Ram Bog** may be literal; the OS Name Book describes the latter as a 'low flat portion of ground in Cattleshiel farm, formerly soft and boggy, but from extensive surface draining is now excellent sheep pasture'.

Some place names include the word *fold*, such as **Stonefold**, **Stonefold Rig** and **Stonefauld Hill**, as well as **Hurdlaw Folds** (good pasture), with possibly Middle English *hōrd* / Middle Scots *huird* as the first element. The idea of a hill hoarded with buried treasure was common in mediaeval times according to Williamson (p.101). **Stoneypark Burn** and **Waterpark Wood** may also be folds according to Dixon (p.160) where '*fauld* and *park* are synonymous terms for an enclosure'. **Washinpool Burn** is described in the OS Name Book: 'a large pool for washing sheep [which] is the origin of the name'.

Some names are identifiable by the use of *shiel*: **Banishiel Rig**, **Bransly Shiel** (a small house occupied by a shepherd), **Brothershiels**, **Craig Windshiel** ('a very indifferent, if not miserable thatched building... on a cold bleak hilly part of the moor'), **Hoprigshiel Wood**, **Luckie Shiel** (also occupied by a shepherd), **Mayshiel** and **Shielburn Wood**. **Camelshiel Castle** is described by Milne as a 'hut on a fold' (p.83). The OS Name Book only references the ruins of a house, 'upwards of 80 years ago since it was inhabited, and previous to that... occupied by shepherds'. Williamson (p.142) links *Camel* to Middle English and Norse, meaning 'old', while Dixon (p.29) links it further to Scandinavian with connotations of 'the old one', another name for the Devil, referring to land that was unfit for cultivation or pasturing. Sources agree that **Kettleshield** refers to C12th or C13th Anglo-Scandinavian surnames in the area; **Penmanshiel Tumulus** is most likely derived from a surname according to The Leverhulme Trust. **Bedshiel** according to Williamson (p.122) comes from the name *Bēda*, but The Leverhulme Trust research states this is unlikely. Moreover, it also argues that Gaelic elements are rare in Berwickshire, which further complicates Milne's analysis.

Milne connects many place names to folds through Gaelic origins. Firstly, the word *chorth*, is attributed to **Borthwick Castle** as *Uig Chorth* 'Nook of the fold' - *Chorth* had subsequently been made *bhorth* and *berth*' (p.20). He links **Crib Cleugh** to the Gaelic *crubh*, fold (p.78) and **Rawburn** to 'Burn at a fold. *Rath*, fold' (p.56). No other sources appear to accept any of these, with Williamson (p.121) and Dixon (p.170) linking *raw* to Old English *rāw* meaning a row of houses. Milne sees the Gaelic word *chuith* or *cuith* for fold in place names with *house*: **Burnhouses** (Burn of the fold p.117); **Darned House** (Fold at a ford over a burn p.79); *wide*: **Easter Wide Hope Stream**, **Wester Wide Hope** (*Chop*, hill, became hope, and *chuid* became wide p.43); **Wide Cleugh** and **Wide Cleugh Rig**; *head* in **Damhead**, **Headshaw**, **Pathhead**, **Rough Head Plantation**, **Townhead Plantation** and **West Woodhead**, (p.50); *foot* in **Rigfoot** (p.120) and *high*, in both **Highside Hill** and **High Strip** (p.86). He translates **Eyewater** to 'Water of the fold' (p.81); **Fee Cleugh** to 'Ravine of the fold' (p.82); **Gifford** to 'Ford at a fold' (p.83); **Haystall Knowe** to 'Steep place at a fold' (p.86); **Keith Hill** (p.89) and **Kidcleugh Burn** (p.89) both with *cuid*, fold; **Newlands**, **Newlands Burn** and **Newlands Castle** (*An Chuith Lamhan* 'fold on the hill' adding, 'there are large old folds near Newlands and Newlands Hill' (p.94) and **Woodcote Mill** (Woodcot for *Coill Cuit*, 'Hill of the fold' p.63). Even **Monynut** is described by Milne as 'Hill of the moor of the fold' (p.93). No other sources verify any of these definitions.

Whilst other sources analysed refer to **Corby Scar**, **Crow Cleugh** and **Crow Stones** relating to bird names, Milne sees all three as connected to *chuitail* or *cuitail*, fold or *cro*, a wattled fold (p.78). The OS Name Book identifies a 'large circle of stones... very much like a Druidical Circle' in the latter, but does connect them to sheepfolds. Similarly, Milne connects both **Cow Cleugh** and **Cowbraehill** to folds (*cuith*, p.28), but both Williamson and Dixon agree they refer to cattle.

According to Milne, there are many examples of the word *airidh*, meaning *shieling* in place names, such as both components in Airhouse (p.17). However, the OS Name Book only identifies the farm as used 'chiefly in grazing' and SWAP translates *air* from Old Norse, meaning a gravel bank. Whilst Milne connects *hare*, Easter Hare Cleugh, Hare Cleugh, Hare Burn, Hare Forest, Hare Hill and Hare Law, with *airidh* (p.37), both Dixon (p.225) and Williamson (p.52) assume the name comes from Old English, *hara*, referring to the animal. The only exception is Hare Faulds Fort where *Faulds* refers to 'part of the outfield of a farm manured by penning cattle on it, a fold' (OS Glossary). The OS Name Book refers to a 'heap of ruined walls of an irregular oval shape, with the remains of an old wall' but says nothing about whether this is a fold. Harehead, according to the OS Name Book has an 'extensive arable and sheep farm attached'; Milne connects *head* to fold, but the OS Glossary translates *head* from *heid*: the highest part of a valley.

According to Milne, *Hair* in Hairlaw Craigs Burn was originally *airidh* (p.85); Williamson (p.87), however, takes this from Old English *hār* meaning 'boundary'. SWAP develops further as 'hoary, grey or white, covered in mould (of a stone marking a boundary)'. While Milne (p.38) describes Heathery Rig as 'slope of the fold on the shieling', no other sources mention the name and would appear to see it as literal. Both Heriot Burn and Heriot's Dyke originate from in *airidh* in Milne (p.86) but the OS Name Book omits the name. Dixon (p.20, p.125) states *heriot* is derived from 'the form of tenure by which the lands were held'. Herd's Hill, according to Milne (p.86), refers to 'hill of the shieling'; there is little reference in other sources, so it could be understood as 'shepherd'. Again, while Milne (p.87) connects Hungry Snout to *airidh*, 'Projecting rock on a shieling hill', the OS Name Book only refers to the land as 'heathy pasture'. SWAP translates *hungry* from Old English *hunrig*, meaning poor or unproductive soil or even a piece of enchanted ground.

Innerwick and Inner Hill originate from *airidh* according to Milne (p.88), although the OS Name Book says the latter is 'so called from being the Inner or nearest Hill to the Farmhouse'. Roger's Cleugh translates to *Ruigh Airidh Cleugh* 'Ravine of the slope on the shieling' only in Milne (p.99). The word *thorter* in both Thorter Cleugh and Thorters Reservoir has a variety of possible meanings, from *airidh* in Milne (p.104) to Middle English *þwertouer*, meaning slanted, squint, awry in SWAP. In the OS Name Book, however, locals say it may be 'a disease among sheep... this Cleugh might have got its name from some of them falling into it while having that disease'.

Milne argues *Buaile* is Gaelic for *fold* names such as Bell Hill (p.19). The OS Name book refers to 'its surface... covered with rough pasture, probably derived its name from a signal-bell' connected to the convent. 'Bell-shaped' however, seems more likely and is the definition Williamson (p.53) assumes. Likewise, Milne (p.71) attributes the first part of Belton Dod with *buaile*., the OS Name Book only recognises its 'heathy pasture'. No other sources agree with Milne that Well Hill can mean *buaile*, 'hill of the fold' accepting instead it is literal: water well.

The word *black* has conflicting meanings according to Milne: in most cases 'black had originally been *dubh*, but in some [cases] it may be a corruption of *bleoghann*, milking-place, in which *ann* became *ie*, afterwards lost. The fold at Black Castle had been mistaken for a fort.' (p.72) Place names in the area, Blackcastle, Blackhag Burn, Black Rig, Blackford, Black Wood, Black Sike, Black Bog Wood, Blackerstone and Blackadder Water are connected to sheepfolds but it is unclear whether the names reflect this, especially as other sources argue the term *black* usually refers to the dark colour of the soil or vegetation. The OS Name Book describes the river bed of Blackadder Water 'consisting of coarse gravel or large stones of dark grey porphyry'. Dixon (p.28) argues that *blæc* and *hwīt* (white) 'often opposed colour appearances of neighbouring places: Whiteside Law and Blackside Rig on either side of Heriot Water. Whiteside faces south into the sun and Blackside Rig, north away from the sun'.

The word *white* also has conflicting interpretations. Milne (p.106) argues that variations, such as Whiteburn, Whittinghaime Mains, Wightman Hill and Writerspath Burn represent '*Chuit*, *cuit* aspirated, fold, which by corruption became white. White Castle is supposed British fort, but the first part shows that it was a fold. White Knowe is knoll of the fold'. The OS Name Book contradicts this: White Knowe is 'grassy, and presents a lighter appearance than the surrounding ground, hence the name'. Williamson (p.23, p.155) argues that Whitchester is *Quhitchestire*, simply *white camp* and *Quhytburn* is *white burn*. Although Dixon's examples do not include those in the data set, he argues that references to *white* come from *hwīt*, with no connection to fold. Milne is also adamant that Whiteadder Water means 'fold on a shieling', whilst The Leverhulme Trust asserts that adjectives like *black* and *white* in river names 'function as contrastive rather than designating actual colours - although it seems likely that the Whiteadder was perceived as clearer or less dark, than the Blackadder'.

Finally, other problematic names come in the form of Fairnylees, Langtonlees, Old Langtonlees and Stobswood Lees. Milne (p.94) asserts that *lee* is from *lios*, meaning fold, whilst Watson (p.150) argues that *lios* correlates to suffixes *-les*, *-les*, but *-lee*, or *liath* mean grey. Further contradictions are found in the etymology of *fair*: the OS Glossary suggests it is Scandinavian for sheep, whilst Williamson (p.32) takes it from Old English *færnige-lēah*, a ferny glade and SWAP from *fearnig*, ferny. Whilst Milne (p.57) believes the word *stell*, in Halliwell Rig Stell and Stell Wood means 'a shelter for sheep, from the word protected' and the OS Glossary lists 'a deep pool in a river, enclosure for sheep, clump or plantation of trees, shelter', Williamson (p.97) suggests there is confusion with Modern Scots *steil*, a 'ridge, point, tongue of land'. Multiple interpretations can be found in Inch Moor and King's Inch, where Milne (p.40) uses the translation from *innis*, meaning island, as a 'place enclosed by water, land, fence, hills, garden, fold, stone circle, hollow', to suggest an enclosed space, 'where drovers had a right to fold cattle at night'. The OS Name Book, however describes 'an elevated portion of moor in Cattleshiel grounds, bounded... by flat grounds, which before they were drained, no doubt were almost covered with water leaving the elevated portion like an Island - hence the name'. Likewise, Milne (p.106) finds the word fold in the obscure name, Whale's Jaw Strip, arguing that 'Fisher people call a whale a *fal*, hence confusion as to the meaning of whale and *fal* in names of places (p.106), but the OS Name Book reveals that the area might once have been called Rangely Kipp: 'on its summit are erected the Jaw bones of a Whale, from which the Hill generally is called Whale's Jaws'. Milne (p.29) is equally sure that Cromwells does not refer to Oliver Cromwell but to *crom*, a circle or fold, while the OS Name Book calls it 'a romantic looking hollow... The reason it received this name, it is supposed Oliver Cromwell pitched camp here while passing through'.

CONCLUSIONS

Overall, the project was able to identify 860 sites/features relating to sheep farming in the Lammermuir Hills. These were recorded and numbered, along with details including their size, location and construction, and collated into a single document (creating a gazetteer of sites), while the data was also used to construct a GIS dataset.

Upon analysis, this dataset yielded a range of results. Chief among these were the typology and frequency of sites within the search area, with circular stone and circular turf sheepfolds being the most common examples. Various forms of pen and enclosure (either explicitly or non-explicitly related to sheep farming), were also common within the search area, representing almost half of the sites recorded.

In terms of their distribution, the raw data indicated that while circular stone and circular turf sheepfolds were to be found throughout the search area, other features tended to appear in clusters, in different parts of the search area. This is not only the case for several of the sheep stall types identified in the study, but also sheep houses and livestock pens and enclosures.

Further research conducted into the dataset used Lidar to assess the relationship between medieval rig and furrow and circular sheepfolds. It showed that, where sheepfolds were found within tracts of rig and furrow, sheepfolds were always superimposed on top of existing cultivation or impacted them. This shows that they were clearly later than rig and furrow in the stratigraphic sequence, and seems to at least partly support the assumption that the majority of sheepfolds are likely to date from the 18th and 19th centuries, as suggested by the historical record, as they are clearly later than medieval in date. Future studies may wish to develop this by assessing the potential relationships between rig and furrow and other types of site identified in this study, including sheep enclosures and farmsteads. Projects mapping the location of rig and furrow within this study's search area may support this endeavour.

In addition to the research into the dataset conducted using LiDAR, QGIS analysis of the dataset was also undertaken. The result of this analysis suggested an apparent preference for the location of circular sheepfolds at elevations of less than 100m, as only a small number of examples were found at higher elevation. Several explanations for this were suggested, including the increased frequency of adverse weather conditions at higher altitude and the lack of other resources essential for animal husbandry in these areas. Proximity to both roadways and pathways and water (to within 150m of sites) was found in 56% and 36% of sheepfolds respectively. Standing structures, along with wooded or plantation areas were also found to be proximal to a significant number of sites, although the usefulness of the latter in terms of sheep rearing is not immediately clear.

Aside from the geospatial analysis of the data collected during this project, a significant amount of research was conducted into the toponyms in the search area and relationships with sheep farming identified. Several of the names of sites within the area appear to be linked to, not only sheep farming, but also other agricultural activity within the Lammermuirs and provides hints into the area's linguistic past. Details regarding specific toponyms proximal to sites found as part of this study may be found in the appendix of this document. While full examination of these was not possible due to the timeframe in which this study took place, future research may wish to focus on the origins and meanings of words identified, as well as the dates during which such names or language were used, and the consequences of this in terms of the area's historical record.

Further research

In order to further develop our understanding of sheep farming in the Lammermuirs, the following research may be undertaken in future, in order to build upon the results of this study:

- Examination of parish records for the stock numbers based on Statistical Accounts
- Examination of landscape use relating to pasture, grazing and field systems.
- Locations of various types of enclosure based on the Shepherds year
- Examination of tracks and roads relating to sheep enclosures, droving and movement across upland environments
- Full examination of toponyms – dates, origins, meanings etc.

BIBLIOGRAPHY AND REFERENCES

- Baldwin, J.R. 1985. *Exploring Scotland's Heritage: Lothian and the Borders*. The Royal Commission on the Ancient and Historical Monuments of Scotland. Edinburgh: Her Majesty's Stationary Office.
- Barber, J. (ed.) 2001. *Guidelines for the Preservation of Areas of Rig and Furrow in Scotland*. Loanhead: Scottish Trust for Archaeological Research.
- Cheape, H. 1983. 'The Lothian Farm Servant', *Northern Studies, The Journal of the Scottish Society for Northern Studies*, 20: 79-104.
- Dixon, P. 1994. 'Field Systems, Rig and Other Cultivation Remains in Scotland: The Field evidence', in Foster, S. & T.C. Smout (eds.) *The History of Soils and Field Systems*. Aberdeen: Scottish Cultural Press, 26-52.
- Dodgshon, R.A. 1976. 'The Economics of Sheep Farming in the Southern Uplands during the Age of Improvement, 1750-1833', *The Economic History Review, New Series*, 29(4): 551-569.
- Fairbairn, J. (Lammermuir Farmer) 1823. *A Treatise upon Breeding, Rearing and Feeding Cheviot and Black-faced Sheep in High Districts*. Berwick—upon-Tweed.
- Halliday, S. 2001. 'Appendix I: Rig and Furrow in Scotland', in Barber, J. (ed.) *Guidelines for the Preservation of Areas of Rig and Furrow in Scotland*. Scottish Trust for Archaeological Research, 10-20.
- Little, J. 1815. *Practical Observations on the Improvement and Management of Mountain Sheep, and Sheep Farms, Also Remarks on Stock of Various Kinds*. Edinburgh: MacRedie, Skelly and Muckersy.
- Millman, R.N. 1975. *The Making of the Scottish Landscape*. London: B. T. Batsford Ltd.
- Napier, W.J. 1822. *A Treatise on Practical Store-Farming as Applicable to the Mountainous Region of Etterick Forrest, and the Pastoral District of Scotland in General*. Edinburgh: Waugh & Innes.
- Naismith R. J. 1989. *Buildings of the Scottish Countryside*. London: Victor Gollancz Ltd. In association with Peter Crawley.
- NSA 1834-1845. *The New Statistical Account of Scotland*, 15 volumes.
<https://stataccscot.edina.ac.uk/static/statacc/dist/home> [accessed 19/07/2020]
- OSA 1791-1799. *The Old Statistical Account of Scotland*, 21 volumes.
<https://stataccscot.edina.ac.uk/static/statacc/dist/home> [accessed 19/07/2020]
- RCAHMS 1997. *Eastern Dumfriesshire: an archaeological landscape*. Edinburgh: The Stationary Office.
- Robson, M.J.G. 1977. *History and traditions of sheep-farming in the Scottish border hills: A study of customary life and practices among the sheepfarming community of the central hill areas before 1900*. PhD thesis. University of Edinburgh.
- Scott Burn, R. 1877. *Practical Architecture: As applied to farm buildings of every description (cow, cattle and calf houses, stables, piggeries, sheep shelter sheds, root and other stores, poultry houses), dairies and country houses and cottages*. London: The Country Office.
- Shaw, J. 1994. 'Manuring and Fertilising the Lowlands 1650-1850', in Foster, S. & T.C. Smout (eds.) *The History of Soils and Field Systems*. Aberdeen: Scottish Cultural Press, 111-118.
- Smout, T.C. 2012. 'A New Look at the Scottish Improvers,' *The Scottish Historical Review*, 91(1): No. 231: 125-149.

Steven, M. 1995. *Parish Life in Eighteenth-Century Scotland: A Review of Old Statistical Account*. Aberdeen: Scottish Cultural Press.

Streatfeild-James, J. 2020. (2nd Ed) *QGIS for Archaeologists (BAJR Guide 42)* BAJR

Trow-Smith, R. 1967. *Life from the Land*. London: Longmans Green & Co Ltd.

Whitfield, L. (ed.) 2000. *Rural Buildings of the Lothians: Conservation and Conversion*. Historic Scotland Guide for Practitioners (1). Edinburgh: Historic Scotland.

Whyte, I. D. & K. A. Whyte 1987. *Exploring Scotland's Historic Landscapes*. Edinburgh: John Donald Publishers Ltd.

Cartographic Sources

Roy, W. 1747-55. *Military Survey of Scotland*. <https://maps.nls.uk/roy/index.html> [Accessed 10/07/2020]

APPENDIX 1 SITE LIST

No	Easting	Northing	length (m)	width/ diameter (m)	Shape	Material	Nearest Toponym	
1	349879	661100		18	Circular	Drystone	Robinson Crusoe's Plantation	Sheepfold (Circular Stone)
2	349809	660934	30	20	Rectilinear	Turf	Heathery Rig	Farmstead
3	348992	660555		21	Circular	Turf	Humbie Water	Sheepfold (Circular Turf)
4	347616	660089	50	10	Rectilinear	Metal/stone	Keith Hill	Sheep enclosure (Complex)
5	347627	660765	12	12	Square	Stone	Keith Hill	Sheep House
6	348063	661565	31	12	Rectilinear	Stone	Blegbie	Sheep House
7	348323	661320	21	21	Square	Stone	Long Wood	Sheep House
8	345521	659229	38	15	Rectilinear	Metal/stone?	Soutra Mains	Sheep enclosure (Complex)
9	344821	657820	20	20	Square	Stone	Soutra Mains Wood	Sheep House
10	344756	658253		20	Circular	Turf	Soutra Mains Wood	Sheepfold (Circular Turf)
11	345664	657393		19	Circular	Drystone	Dun Law	Sheepfold (Circular Stone)
12	345351	657853		18	Circular	Stone/Turf?	Armet Water	Sheepfold (Circular Turf)
13	347003	658416		18	Circular	Turf	Huntershall	Sheepfold (Circular Turf)
14	347127	658474	35	28	Rectilinear	Stone	Huntershall	Sheep enclosure (Complex)
15	346916	659125		19	Circular	Turf	Linn Dean Water	Sheepfold (Circular Turf)
16	348761	659400	35	35	Square	Turf	Linn Dean Burn	Farmstead
17	348786	659334	40	42	Square	Turf	Linn Dean Burn	Livestock Enclosure
18	348884	659356	38	38	Square	Turf	Linn Dean Burn	Livestock Enclosure
19	348867	659284	36	36	Square	Turf	Linn Dean Burn	Livestock Enclosure
20	348659	659434	36	36	Square	Turf	Linn Dean Burn	Livestock Enclosure
21	348677	658282		20	Circular	Drystone	Headshaw Burn	Sheepfold (Circular Stone)
22	347725	656469		22	Circular	Stone/Turf?	Windy Cleugh	Sheepfold (Circular Turf)
23	347153	656874	35	23	Rectilinear	Stone	Dun Law	Sheep enclosure (Complex)
24	348529	657305	24	11	Rectangular	Stone	Headshaw Burn	Livestock Enclosure

No	Easting	Northing	length (m)	width/ diameter (m)	Shape	Material	Nearest Toponym	
25	348980	657230	21	21	Square	Stone	Headshaw Hill	Livestock Enclosure
26	347985	659187		18	Circular	Turf	Linn Dean Burn	Sheepfold (Circular Turf)
27	349581	662181	126	40	Keyhole	Stone	Waterloo Plantation	Keyhole Fold
28	346101	654595	42	14	Rectilinear	Turf	Hartside Hill	Sheep Stell wall
29	346614	654429	30	25	Rectilinear	Turf	Raughy Burn	Livestock Enclosure
30	346128	654556		12	Circular	Turf	Hartside Hill	Sheepfold (Circular Turf)
31	345936	654506		16	Circular	Drystone	Hartside Hill	Sheepfold (Circular Turf)
32	343232	653215		12	Circular	Drystone	Armet Water	Sheepfold (Circular Stone)
33	342507	652320	41	18	Rectilinear	Stone	Crookston South Mains	Sheep enclosure (Complex)
34	349853	662734	43	45	Square	Stone	Stonefauld Hill	Sheep enclosure (Complex)
35	349669	661019	18	12	L-Shape	Metal?	Robinson Crusoe's Plantation	Field Enclosure (Corner)
36	343687	656307	45	20	Rectilinear	Stone/Turf?	Brotherstone Hill	Field Enclosure (Rectangular)
37	343723	656131	70	20	Rectilinear	Stone	Brotherstone Hill	Sheep Dip / Sheep Wash
38	342888	656240	20	20	Square	Stone	Upper Brotherstone	Sheep House
39	342434	657147	20	20	Square	Stone	Master Cleugh Burn	Sheep House
40	343585	659395	20	20	Square	Stone/Turf?	North Wood	Field Enclosure (Rectangular)
41	349862	661177		40	Circular	Turf?	Robinson Crusoe's Plantation	Sheepfold (Circular Turf)
42	346004	660783	22	14	Rectilinear	Stone/Turf?	Woodcote Mill	Field Enclosure (Rectangular)
43	346025	660789	20	22	Square	Stone	Woodcote Mill	Sheep House
44	343154	659367		15	Circular	Turf	Fala Moor	Sheepfold (Circular Turf)
45	341311	659341	7	7	Square	Stone	Blackcastle	Field Enclosure (Rectangular)
46	341273	659208	33	9	Rectangular	Stone	Cakemuir Castle	Field Enclosure (Rectangular)
47	340958	659158	26	23	Rectangular	Stone	Blackcastle	Sheep House
48	340804	659118	17	5	Rectilinear/elongated	Stone	Cakemuir Burn	Field Enclosure (Rectangular)
49	340129	658240	45	18	Rectangular	Stone/metal?	Cakemuir Hill	Sheep enclosure (Complex)
50	340609	657093	22	23	Square	Stone?	Cakemuir Hill	Sheep House

No	Easting	Northing	length (m)	width/ diameter (m)	Shape	Material	Nearest Toponym	
51	339739	657833	22	3	Irregular	Stone?	Cowbraehill	Field Enclosure (Rectangular)
52	340515	655628	27	26	Square	Stone	Nettlingflat	Sheep House
53	340670	655609	50	20	Irregular	Stone	Nettlingflat	Sheep enclosure (Complex)
54	341226	656418	43	18	Rectangular	Stone?	Sandy Knowe	Sheep enclosure (Complex)
55	342221	656531	13	6	Rectangular	Stone?	Brothershiels	Sheep House
56	342980	655002	9	7	Rectangular	Stone?	Nether Brotherstone	Livestock Enclosure
57	340952	654372	16	13	Rectangular	Stone	Hangingshaw Hill	Sheep House
58	341066	653961	20	10	Rectilinear	Stone	Hangingshaw	Field Enclosure (Corner)
59	341104	653993	10	8	Irregular/trapezoidal?	Stone	Hangingshaw	Sheep Dip / Sheep Wash
60	341357	653416	24	21	Triangular	Stone?	Stagebank	Field Enclosure (Corner)
61	341810	653307		29	Circular	?	Crookston South Mains	Sheepfold (Circular Turf)
62	341657	653307		24	Circular	?	Crookston South Mains	Sheepfold (Circular Turf)
63	341574	653007		40	Circular	?	Crookston South Mains	Sheepfold (Circular Turf)
64	341632	653030		40	Circular	?	Crookston South Mains	Sheepfold (Circular Turf)
65	342588	653621	32	28	Triangular	Stone?	Crookston Mains	Field Enclosure (Corner)
66	342955	653583	9	4	Rectilinear	Stone/turf?	Crookston Mains	Sheep enclosure (Complex)
67	343028	654581	10	10	Square	Stone?	Nether Brotherstone	Livestock Enclosure
68	343575	655070	26	32	Rectilinear	Stone/metal?	Brotherstone Hill	Sheep Dip / Sheep Wash
69	343764	654907		12	Circular	Drystone	Nether Brotherstone	Sheepfold (Circular Stone)
70	343164	655403	16	12	Irregular	Stone/metal?	Brotherstone Wood	Field Enclosure (Corner)
71	344301	656231	11	2	Rectilinear	Stone	Gilston	Sheep Dip / Sheep Wash
72	345773	654756	6	3	Rectangular	Stone?	Hartside Hill	Livestock Enclosure
73	346143	654669		11	Circular	Stone/Turf?	Hartside Hill	Sheepfold (Circular Stone)
74	345685	657414		17	Circular	Turf	Dun Law	Sheepfold (Circular Turf)
75	347065	654955	21	10	Triangular	Stone?	Raughy Burn	Sheep Dip / Sheep Wash
76	346215	653737	66	13	Rectangular	Stone?	Hartside Farm	Sheep enclosure (Complex)

No	Easting	Northing	length (m)	width/ diameter (m)	Shape	Material	Nearest Toponym	
77	345538	653686	55	7	Rectilinear	Metal?	Hartside Hill	Field Enclosure (Rectangular)
78	346772	653765	34	21	Rectilinear	Stone	Hartside	Sheep enclosure (Complex)
79	346592	653576	74	20	Rectilinear	Stone	Hartside	Sheep Dip / Sheep Wash
80	348434	653645	26	18	Rectilinear	Stone?	Airhouse	Livestock Enclosure
81	348131	653545			Rectilinear	Stone/metal?	Airhouse	Field Enclosure (Corner)
82	344566	652838		15	Circular	Drystone	Toddle Burn	Sheepfold (Circular Stone)
83	357702	653100	19	18	Square	Turf	NW of Broadshawrig	Livestock Enclosure
83	344134	653120	47	32	Rectangular	Stone	Clints Farm	Sheep enclosure (Complex)
84	344344	653300	68	5	Irregular	Stone	Toddle Burn	Sheep enclosure (Complex)
85	343964	650823	18	17	Square	Stone	Cortleferry Hill	Sheep House
86	343447	650027	32	26	Irregular	Stone?	Cortleferry Farm	Sheep enclosure (Complex)
87	344174	651607	31	26	Irregular	Stone	Cortleferry Hill	Sheep Dip / Sheep Wash
88	344135	651764	14	6	Irregular	Stone/turf?	Middle Hill	Sheep Dip / Sheep Wash
89	340822	653705	27	16	Rectilinear	Stone	Hangingshaw Old Inn	Sheep enclosure (Complex)
90	345270	650660	62	20	Rectangular	Stone?	Nethertown Burn	Sheep enclosure (Complex)
91	345472	650709	28	10	Rectilinear	?	Nethertown Burn	Sheep Dip / Sheep Wash
92	346188	652795	14	14	Square	Stone	Threeburnford Hill	Sheep House
93	346552	653053	11	6	Triangular	Turf	Threeburnford Hill	Sheep Shelter (Structure)
94	346528	652409	13	11	Rectangular	Turf	Threeburnford Hill	Field Enclosure (Rectangular)
95	346966	652133	19	18	Triangular	Metal/stone?	Threeburnford	Sheep Dip / Sheep Wash
96	347184	652367	36	10	Rectilinear	Turf/stone?	Mountmill Burn	Field Enclosure (Corner)
97	346565	653764	25	12	Rectilinear	Turf/stone?	Hartside	Field Enclosure (Rectangular)
98	347545	654490	34	16	Rectilinear	Stone	Kirkton Hill	Sheep enclosure (Complex)
99	347974	655506	45	30	Irregular	Stone/metal?	Glengelt	Sheep enclosure (Complex)
100	348141	655639	12	6	Rectilinear	Stone/Turf?		Farmstead
101	348549	655641	50	15	Irregular	Stone/Turf?	New Channelkirk	Field Enclosure (Rectangular)

No	Easting	Northing	length (m)	width/ diameter (m)	Shape	Material	Nearest Toponym	
102	348985	655375	39	18	Irregular	Stone	Headshaw	Sheep enclosure (Complex)
103	349767	661258	41	5	Rectangular	Stone/Turf?	Robinson Crusoe's Plantation	Field Enclosure (Rectangular)
104	349350	661573	20	5	Rectilinear	Stone/Turf?	Windy Law	Field Enclosure (Corner)
105	345437	657379	50	12	Rectilinear	Turf?	King's Inch	Sheep Dip / Sheep Wash
106	345495	657279	35	28	Rectangular	Turf?	King's Inch	Livestock Enclosure
107	346144	657959		22	Circular	Turf	Hen Moss	Sheepfold (Circular Turf)
108	346143	657972		19	Circular	Turf	Hen Moss	Sheepfold (Circular Turf)
109	346435	658295		16	Circular	Turf	Hen Moss	Sheepfold (Circular Turf)
110	346676	658015		26	Circular	Turf	Dun Law	Sheepfold (Circular Turf)
111	346738	657994		30	Circular	Turf	Dun Law	Sheepfold (Circular Turf)
112	346298	658645	78	78	Square	Turf	Soutra Hill	Livestock Enclosure
113	348951	659199		45	Sub-Circular	Turf	Linn Dean Burn	Field Enclosure (Rectangular)
114	341206	657870	8	3	Rectangular	Turf/stone?	Cakemuir Edge	Field Enclosure (Rectangular)
115	344260	659193		19	Circular	Turf	Salvandi	Sheepfold (Circular Turf)
116	343522	657091		41	Circular	Turf	Brotherstone Hill	Sheepfold (Circular Turf)
117	346340	655800		14	Circular	Turf	Raughy Burn	Sheepfold (Circular Turf)
118	346317	655722	13	13	Square	Turf	Raughy Burn	Livestock Enclosure
119	346240	655672		14	Circular	Turf	Raughy Burn	Sheepfold (Circular Turf)
120	347037	655475	45	10	Rectilinear	Stone/metal?	Turf Law	Sheep enclosure (Complex)
121	346143	651270		18	Circular	Turf	Mean Burn	Sheepfold (Circular Turf)
122	346147	651288	36	19	T-shaped	Turf	Mean Burn	Sheep Stell wall
123	345923	651130	26	6	Rectangular	Stone/metal?	Easter Town	Sheep enclosure (Complex)
124	346198	650762		25	Circular	Turf	Longmuir Rig	Sheepfold (Circular Turf)
125	349703	650565	36	26	Irregular	Stone	Bowerhouse	Sheep enclosure (Complex)
126	349577	662121	36	26	Rectangular	Stone?	Waterloo PLantation	Field Enclosure (Corner)
127	341683	653032	55	72	Rectangular	Stone	Crookston South Mains	Livestock Enclosure

No	Easting	Northing	length (m)	width/ diameter (m)	Shape	Material	Nearest Toponym	
128	360200	666185			Rectangular	Stone	DARNED HOUSE	Farmstead
129	357234	667653	3	7	Rectangular	Not visible	BLACK WOOD	Field Enclosure (Rectangular)
130	356719	667848	8	3	Rectangular	Not visible	DANSKINE LOCH	Field Enclosure (Rectangular)
131	359319	668013	24	10	Rectangular	Not visible	WHALES JAW STRIP / STAR WOOD	Field Enclosure (Rectangular)
132	356264	668007	9	5	Rectangular	Not visible	WALDEN ROUNDALL	Field Enclosure (Corner)
133	354475	668001	28	9	Rectangular	Not visible	GIFFORD/CURLING POND	Field Enclosure (Rectangular)
134	356912	668228	10	4	Rectangular	Not visible	GREENLAW CLUMP	Field Enclosure (Rectangular)
135	358436	668242	10	12	Rectangular	Not visible	BIRSET HILL / STAR WOOD	Field Enclosure (Rectangular)
136	359756	668381		17	Circular	Turf	MILLSIT STRIP	Sheepfold (Circular Turf)
137	358524	668459	5	3	Rectangular	Not visible	PAPANA WATER	Field Enclosure (Rectangular)
138	357328	668959	21	/	LINE	Stone	CARFRAE	Sheep Stell wall
139	358963	669454	25	15	Rectangular	OUTBUILDIN	BEVERIDGE'S STRIP	Sheep House
140	357005	669764	24	18	COMPLEX	STONE	SOUNDING BURN	Field Enclosure (Corner)
141	356187	669667	18	3	Rectangular	Not visible	BARO BARRACKS	Field Enclosure (Rectangular)
142	358035	670081	28	4	Rectangular	Not visible	SLED HILL	Field Enclosure (Corner)
143	359150	669990	11	4	Rectangular	Not visible	NUNRAW WOOD	Field Enclosure (Rectangular)
144	359335	670713	10	4	Rectangular	Not visible	NUNRAW CONVENT RUINS	Field Enclosure (Rectangular)
145	358926	667143	24	9	Triangle	Not visible	SNAWDON WOODS	Sheep Dip / Sheep Wash
146	357340	667168	9	3	Rectangular	STONE	HORNSHULL	Field Enclosure (Corner)
147	355743	667278	27	9	Rectangular	Not visible	WALDEN CLEUGH	Sheep enclosure (Complex)
148	359121	666589	19	30	Rectangular	Not visible	SNAWDON WOODS	Sheep enclosure (Complex)
149	358790	666553		25	Circular	Turf	SNAWDON WOODS	Sheepfold (Circular Turf)
150	353881	666671	9	6	Rectangular	Not visible	FOXES WOOD/YESTER MAINS	Field Enclosure (Rectangular)
151	353619	666570	56	20	Rectangular	Not visible	YESTER MAINS	Sheep enclosure (Complex)
152	357225	666197		12	Circular	Not visible	NEWLANDS	Sheepfold (Circular Turf)

No	Easting	Northing	length (m)	width/ diameter (m)	Shape	Material	Nearest Toponym	
153	360129	666116			V-Shaped	Not visible	DARNED HOUSE	Sheepfold (Other)
154	358669	665905	28	4	V-Shaped	Not visible	GREEN CASTLE / FORT	Sheepfold (Other)
155	356761	666048	14	8	COMPLEX	Not visible	NEWLANDS BURN	Sheep enclosure (Complex)
156	353490	665893	11	4	Rectangular	Not visible	SOUTH PORT	Field Enclosure (Rectangular)
157	357734	665699	38	17	COMPLEX	STONE	NEWLANDS BURN / GREEN CASTLE	Sheep enclosure (Complex)
158	358307	665766		18	Circular	Turf	GREEN CASTLE	Sheepfold (Circular Turf)
159	357983	665533		9	Circular	Not visible	GREEN CASTLE	Sheepfold (Circular Turf)
160	360007	665486		22	Circular	Drystone	MOSS LAW	Sheepfold (Circular Stone)
161	355973	664652	4	4	SQUARE		BROOKSIDE	Sheep enclosure (Complex)
162	358705	664423		15	Circular	Drystone	EASTER MOSSY BURN	Sheepfold (Circular Stone)
163	354984	664122		26	Circular	Drystone	STELL WOOD / HARE LAW	Sheepfold (Circular Stone)
164	352305	663888	30	13	Rectangular	Not visible	FERRY LOCH	Sheep enclosure (Complex)
165	352899	664019	15	10	Rectangular	Not visible	BACK BURN	Sheepfold (Other)
166	354763	663919	17	27	Rectangular	Not visible	DENTY HALL	Field Enclosure (Corner)
167	359594	663817		16	Circular	Turf	WANSIDE RIG	Sheepfold (Circular Turf)
168	360228	663630		19	Circular	Turf	FASENY WATER / WANSIDE CLEUGH	Sheepfold (Circular Turf)
169	351171	663541	15	16	SQUARE	Not visible	LAMMER LOCH	Sheep enclosure (Complex)
170	353826	663190		16	Circular	Drystone	BROWN RIG BURN	Sheepfold (Circular Stone)
171	358383	663187		11	Circular	Not visible	FASENY WATER	Sheepfold (Circular Turf)
172	360345	662922		14	Circular	TURF?	LAMB BURN	Sheepfold (Circular Turf)
173	357899	663001		10	Circular	Drystone	EAST RIG	Sheepfold (Circular Stone)
174	353354	663057	3	3	SQUARE	Not visible	GALA LAW	Sheepfold (Other)
175	353440	662997		16	Circular	Drystone	GALA LAW	Sheepfold (Circular Stone)
176	353188	662771		13	Circular		White Knowe	Sheepfold (Circular Turf)
177	354227	662845			Circular			Sheepfold (Circular Turf)

No	Easting	Northing	length (m)	width/ diameter (m)	Shape	Material	Nearest Toponym	
178	355730	662664	44	18	Rectangular	STONE	West Hopes	Sheep enclosure (Complex)
179	354226	661262		14	Circular	Drystone	Hopes Water	Sheepfold (Circular Stone)
180	353780	661034		16	Circular	STONE?	MADYAD/ROGERS CLEUGH	Sheepfold (Circular Stone)
181	352087	660914		10	Circular	Drystone		Sheepfold (Circular Stone)
182	353468	660964			Rectangular		HARLEY GRAIN / LONG CLEUGH	Livestock Enclosure
183	353213	662760	17	17	Square	TURF?	White Knowe	Livestock Enclosure
184	353152	662751	15	16	Square	TURF?	White Knowe	Livestock Enclosure
185	354253	662935		17	Circular	Turf	Pyatshaw Plantation	Sheepfold (Circular Turf)
186	354261	662909		20	Circular	Turf	Pyatshaw Plantation	Sheepfold (Circular Turf)
187	354160	663290	29	23	Circular	Turf	Brown Rig Burn	Sheepfold (Circular Turf)
188	359236	665838	16	23	Circular	Turf	Newlands Hill	Sheepfold (Circular Turf)
189	351188	659457	x	14	Circular	Drystone	W of Crib Cleugh	Sheepfold (Circular Stone)
190	351296	659921	302	120 / 52	Complex	Stone	E of Friar's Nose	Sheep enclosure (Complex)
191	351574	657299	x	x	Circular Spoked	U	W of Tollishill Dod	Sheepfold (Circular Turf)
192	350884	653275	68	21	Complex Rectangular	Stone?	S of Carfraemill Inn G.P	Livestock Enclosure
193	351873	651204	46	31	Rectangular	U	NE of Blackburn	Livestock Enclosure
194	352215	650880	31	6	Rectangular	Stone	E of Blackburn	Farmstead
195	355935	649976	14	12	Square	U	E of Snaudon Burn	Sheep Shelter (Structure)
196	356352	650487	x	12	Circular	Drystone	NW of The Scawart	Sheepfold (Circular Stone)
197	356080	653171	x	14	Circular	Drystone	Edgarhope Law	Sheepfold (Circular Stone)
198	356327	651770	x	17	Circular	Drystone	W of Wheelburn Law	Sheepfold (Circular Stone)
199	355657	652240	x	19	Circular	Drystone	Borrowston Rig	Sheepfold (Circular Stone)
200	352791	654178	41	40	Square	U	Soonhope	Livestock Enclosure
201	350087	655926	19	10	Rectanglar	U	N of Hillhouse Burn	Sheepfold (Other)
202	353096	650319	19	20	Complex Square	U	W of Newbigging Walls	Sheepfold (Other)

No	Easting	Northing	length (m)	width/ diameter (m)	Shape	Material	Nearest Toponym	
203	350290	655299	x	x	Rectangular	U	W of Hillhouse Burn	Field Enclosure (Corner)
204	350020	655248	35	13	Complex Rectangular	U	NW of Carfrae	Sheep enclosure (Complex)
205	355230	652948	x	18	Circular	Drystone	E of Trow Hill	Sheepfold (Circular Stone)
206	352130	650557	31	14	Complex Rectangular	U	NW of Lauderhaugh	Sheep enclosure (Complex)
207	352680	651662	34	21 / 2	Triangular	U	SE Lylestone	Field Enclosure (Corner)
208	357808	650001	93	50	Rectangular	U	NW Spotts Burn	Livestock Enclosure
209	357813	650253	x	14	Circular	Drystone	NNW of Spotts Burn	Sheepfold (Circular Stone)
210	352720	651693	6	7	Square	Turf?	E Lylestone	Livestock Pen
211	357805	650773	x	16	Circular	Drystone	W of PeatLaw	Sheepfold (Circular Stone)
212	355347	650838	x	17	Circular	Drystone	SE of Dabshead Hill Fort	Sheepfold (Circular Stone)
213	352290	651594	142	48 / 5	Triangular	U	SW of Lylestone	Livestock Enclosure
214	352551	651739	40	16	Complex Rectangular	U	E Lylestone	Sheep enclosure (Complex)
215	352772	651535	6	5	Square	U	SE Lylestone	Livestock Pen
216	352710	651622	6	5	Square	U	SE Lylestone	Livestock Pen
217	352818	651662	6	5	Square	U	SE Lylestone	Livestock Pen
218	353715	651419	183	43	Rectangular	U	W of Burn Castle	Livestock Enclosure
219	353859	651406	5	6	Square	U	SE of Burncastle	Livestock Enclosure
220	353867	651159	62	23	Complex Rectangular	U	SW of Burncastle	Field Enclosure (Rectangular)
221	354054	651728	18	18	Square	U	NNE of Burn Castle	Livestock Enclosure
222	354112	651837	170	35	Rectangular	Turf	W of Earnscleugh Wate	Livestock Enclosure
223	353992	651670	172	31	Rectangular Polygon	Turf	N of Burn Castle	Livestock Enclosure
224	357838	653075	x	x	Complex Rectangular	U	NW of Broadshawrig	Field Enclosure (Corner)
225	354119	651170	12	6	Rectangular	U	NW of Thornyside Heugh	Sheep Shelter (Structure)
226	357063	651013	13	14	Square	Turf	N of Scawart	Livestock Enclosure
227	357596	651928	x	15	Circular	Drystone	NE of Wolfen Burn	Sheepfold (Circular Stone)
228	352226	653124	27	20	Complex Rectangular	U	SE of West Addinston	Sheep enclosure (Complex)

No	Easting	Northing	length (m)	width/ diameter (m)	Shape	Material	Nearest Toponym	
229	358181	652450	41	14	Rectangular	Stone?	NW of Howebog	Farmstead
230	358360	651640	x	16	Circular	Drystone	S of Scoured Rig	Sheepfold (Circular Stone)
231	358327	651709	12	11	Square	Turf?	S of Scoured Rig	Sheep Shelter (Structure)
232	358487	650978	x	15	Circular	Drystone	N of PeatLaw	Sheepfold (Circular Stone)
233	359206	650634	49	17	Rectangular	Turf?	NW of Cromwells	Livestock Enclosure
234	358985	651947	x	15	Circular	Turf	NE of Scoured Rig	Sheepfold (Circular Turf)
235	359167	652381	x	17	Circular	Drystone	NW of Boondreigh	Sheepfold (Circular Stone)
236	358808	652580	x	x	Complex Circular and Rectangular Polygon	Stone	N of Craig Sike	Sheepfold (Circular Stone)
237	359293	652910	x	17	Circular	Drystone	N of Craig Sike	Sheepfold (Circular Stone)
238	359502	651291	37	24	Rectangular	Stone	Bruntaburn Wood	Livestock Pen
239	359532	651669	41	17	Rectangular	Stone	Bruntaburn Wood	Field Enclosure (Rectangular)
240	351935	653115	42	25	Complex Rectangular Polygon	U	SW of West Addinston	Sheep enclosure (Complex)
241	354173	652609	10	13	Square	U	SW of Willowcleugh Hill	Livestock Enclosure
242	351986	653048	22	22	Rectangular	Stone	SW of West Addinston	Sheep House
243	352202	653172	40	28	Rectangular?	U	SE of West Addinston	Livestock Enclosure
244	357677	653164	x	17	Circular	Drystone	NW of Broadshawrig	Sheepfold (Circular Stone)
245	357687	653136	21	18	Square	Turf	NW of Broadshawrig	Livestock Enclosure
246	357803	653113	x	15	Circular	Turf	NW of Broadshawrig	Sheepfold (Circular Turf)
247	357815	653030	x	16	Circular	Turf	NW of Broadshawrig	Livestock Enclosure
248	358678	653340	42	21	rectangular	U	SW of Easter Burn	Livestock Enclosure
249	358755	653296	6	8	Square	U	SW of Easter Burn	Livestock Enclosure
250	359007	653709	x	16	Circular	Drystone	Eastern Burn	Sheepfold (Circular Stone)
251	353846	653469	x	47	Circular	Drystone	NE of Longcroft Allers	Sheepfold (Circular Stone)
252	352308	653655	x	16	Circular	Turf	West Addinston Hill	Sheepfold (Circular Turf)
253	351536	654136	48	15	Rectangular	U	W of Packman Knowe	Field Enclosure (Rectangular)

No	Easting	Northing	length (m)	width/ diameter (m)	Shape	Material	Nearest Toponym	
254	355772	653957	29	18	Rectangular	Stone	Bermuda	Livestock Enclosure
255	355930	654026	32	18 / 17 (diameter)	Large Keyhole	Stone	NE of Bermuda	Keyhole Fold
256	356710	653960	x	38	Circular	Turf	NE of Earnsclough	Sheepfold (Circular Turf)
257	356830	653937	x	18	Circular	Drystone	NE of Earnsclough	Sheepfold (Circular Stone)
258	358885	654456	x	17	Circular	Drystone	NE of Hig Rig	Sheepfold (Circular Stone)
259	353147	654359	19	23	Square	Turf	Longcroft Hill	Livestock Enclosure
260	352452	654943	27	24	Rectangular	U	SW of Hog Hill	Livestock Pen
261	352890	654555	x	16	Circular	Drystone	E of Hope Burn	Sheepfold (Circular Stone)
262	352903	654576	x	16	Circular	Drystone	E of Hope Burn	Sheepfold (Circular Stone)
263	353588	654682	32	27	Y	U	S of Longcroft Hill	Sheep Stell Y
264	353532	654645	16	16	Square	U	S of Longcroft Hill	Livestock Enclosure
265	354145	654682	20	15	Rectangular	U	S of Foxes Cleugh	Livestock Enclosure
266	354114	654578	20	17	Square	U	N of Gladesclough Burn	Livestock Enclosure
267	358140	654648	x	x / 19 (diameter)	Keyhole Circular	Stone	S of Blytherig	Sheepfold (Circular Stone)
268	358123	654785	48	20	Rectangular	Stone	Blytherig	Livestock Enclosure
269	358436	654673	14	5	Rectangular	Stone	S of Carriage Law	Sheepfold (Other)
270	359559	654702	x	12	Circular	Drystone	E of Carriage Law	Sheepfold (Circular Stone)
271	358979	655038	x	16	Circular Spoked	Stone	NE of Carriage Law	Sheepfold (Circular Stone)
272	356971	655382	x	14	Circular	Drystone	W of The Dod	Sheepfold (Circular Stone)
273	356572	655122	11	13	Rectangular	Stone	E of Green Burn	Sheepfold (Other)
274	356556	655137	16	12	Polygon	Stone	E of Green Burn	Sheepfold (Other)
275	353904	655041	x	x	Rectangular	U	E of Longcroft Hill	Livestock Pen
276	354129	655186	x	13	Circular Spoked	Stone	N of Whalplaw Burn	Sheepfold (Circular Stone)
277	353862	655054	27	19	Rectangular	Turf	E of Longcroft Hill	Livestock Pen
278	353830	655270	13	11	Rectangular	Turf	W of Ferny Cleugh	Field Enclosure (Rectangular)

No	Easting	Northing	length (m)	width/ diameter (m)	Shape	Material	Nearest Toponym	
279	353130	655044	29	29	Y	Stone	E of Soonhope Burn	Sheep Stell Y
280	353000	655352	x	13	Circular	Drystone	W of Soonhope Burn	Sheepfold (Circular Stone)
281	353164	655173	21	16	Rectangular	Turf?	E of Soonhope Burn	Livestock Enclosure
282	352732	655048	25	22	Rectangular	Turf	Hog Hill	Livestock Pen
283	352732	655083	27	22	Rectangular	Turf	Hog Hill	Livestock Pen
284	352407	655006	20	27	Rectangular	U	SW of Hog Hill	Livestock Pen
285	351867	655406	x	20	Circular	Drystone	NW of Hog Hill	Sheepfold (Circular Stone)
286	351804	655421	26	24	Square	Turf	NW of Hog Hill	Livestock Pen
287	351150	655363	47	24	Rectangular	Stone	NE of Hillhouse	Field Enclosure (Corner)
288	350699	655214	x	x	Complex Rectangular	Stone	Hillhouse	Livestock Enclosure
289	354159	655728	31	25	Rectangular		W of Widecleugh Rig	Livestock Enclosure
290	354459	651761	24	21	Square	U	SW of Earnscleugh	Field Enclosure (Corner)
291	350644	655641	79	23	Rectangular Polygon	Stone	N of Hillhouse	Field Enclosure (Corner)
292	351420	655456	29	20	Rectangular	Turf?	NE of Hillhouse	Farmstead
293	352694	655430	40	27	Rectangular	U	N of Hog Hill	Livestock Pen
294	352977	655599	x	14	Circular	Drystone	W of Soonhope Burn	Sheepfold (Circular Stone)
295	353340	655388	33	25	Rectangular	U	E of Soonhope Burn	Livestock Enclosure
296	353505	655691		23	Circular	U	SE of Cadam Law	Sheepfold (Circular Turf)
297	354142	655771	27	25	Square	U	W of Widecleugh Rig	Livestock Enclosure
298	354529	655520	x	14	Circular	Drystone	SW of Widecleugh Rig	Sheepfold (Circular Stone)
299	354334	655476	x	15	Circular	Turf	N of Whalplaw Burn	Sheepfold (Circular Turf)
300	354554	655570	15	10	Rectangular	U	S of Widecleugh Rig	Livestock Enclosure
301	359791	655656	x	19	Circular	Drystone	SE of Pulpit Law	Sheepfold (Circular Stone)
302	354525	656029	x	x	Complex	Stone	Glenburnie	Sheepfold (Circular Stone)
303	354467	656035	15	7	Rectangular	Stone	Glenburnie	Farmstead
304	352611	655975	x	x	U	U	SW of Cadman Law	Livestock Pen

No	Easting	Northing	length (m)	width/ diameter (m)	Shape	Material	Nearest Toponym	
305	354603	655202	19	12	Complex Rectangular	U	N of Thorny Cleugh	Livestock Pen
306	354692	655467	24	17	Complex Rectangular	U	W of Wide Cleugh	Livestock Pen
307	349866	656753	27	27	Complex Squares	Stone	Fairnylees	Farmstead
308	354562	655596	14	14	Square	U	W Widecleugh Rig	Livestock Enclosure
309	354544	655508	x	15	Circular	Turf?	SW of Widecleugh Rig	Sheepfold (Circular Turf)
310	352697	656177	27	28	Square	Turf	E of Cadam Law	Livestock Enclosure
311	352711	656141	23	22	Square	Turf	E of Cadam Law	Livestock Enclosure
312	352654	656095	45	30	Rectangular	Turf	E of Cadam Law	Livestock Enclosure
313	352753	656008	34	36	Square	Turf	Cadam Law	Livestock Enclosure
314	358405	656286	x	13	Circular	Stone	N of Pulpit Law	Sheepfold (Circular Stone)
315	353219	656438	53	40	Rectangular	Stone	Cadam Law	Livestock Enclosure
316	352945	656332	123	119	Square	Stone	Cadam Law	Livestock Enclosure
317	351353	656694	226	33	Rectangular	Turf	SE of Dod Cleugh	Field Enclosure (Corner)
318	352109	656630	17	12	Rectangular	U	S Dod Cleugh	Livestock Pen
319	352384	656739	x	25	Circular	Turf	SE of Dod Cleugh	Sheepfold (Circular Turf)
320	352324	656705	130	101	Rectangular	Stone and Turf?	SE of Dod Cleugh	Livestock Enclosure
321	352640	656697	127	x	Complex	U	SE of Dod Cleugh	Farmstead
322	353109	656684	36	31	Rectangular	Turf	N of Cadam Law	Livestock Enclosure
323	354968	656784	x	12 and 12	Double Circular	Stone and Turf	W of Wedder Law	Sheepfold (Circular Stone)
324	353640	657170	x	17	Circular	Drystone	SW of Saddler Rig	Sheepfold (Circular Stone)
325	353281	657138	191	62	Rectangular	Turf	S of Coral Rig	Farmstead
326	354601	652542	15	13	Square	U	S of Trow Burn	Livestock Pen
327	352087	657280	13	12	Square	U	N of Dod Cleugh	Livestock Enclosure
328	352025	657280	16	7	Rectangular	U	N of Dod Cleugh	Livestock Enclosure
329	350604	657661	x	21	Circular	Turf	E of Hillhouse Burn	Sheepfold (Circular Turf)

No	Easting	Northing	length (m)	width/ diameter (m)	Shape	Material	Nearest Toponym	
330	352475	657666	25	15	Rectangular	U	NE of Tollishill Dod	Livestock Pen
331	353369	657658	17	12	Rectangular	U	E of Several Rig	Livestock Pen
332	353682	657696	x	14	Circular	Drystone	NW of Lockies Lodge	Sheepfold (Circular Stone)
333	353697	657686	x	15	Circular	Drystone	NW of Lockies Lodge	Sheepfold (Circular Stone)
334	353729	657502	x	x	Complex	Stone and Turf	Lockies Lodge	Farmstead
335	353699	657660	49	30	Complex Rectangular	Stone?	NW of Lockies Lodge	Livestock Enclosure
336	359150	650699	9	8	Open Square	Stone	NW of Cromwells	Field Enclosure (Rectangular)
337	353733	657902	13	12	Square	U	S of Flinty Law	Livestock Pen
338	353248	658012	18	10	Rectangular	U	S of Bell Hill	Livestock Pen
339	353140	657861	x	15	Circular	Drystone	S of Bell Hill	Sheepfold (Circular Stone)
340	352423	658113	x	14	Circular	Drystone	N of Several Rig	Sheepfold (Circular Stone)
341	357464	650045	x	x	Complex	Stone	Hare Faulds Fort	Livestock Enclosure
342	351787	657984	196	65	rectangular	U	Tollishill	Livestock Enclosure
343	351376	657862	19	6	Triangular	Metal	Tollis Hill	Livestock Pen
344	351389	658324	x	x	Complex	Stone?	Kelphope	Sheep enclosure (Complex)
345	351205	658338	52	22	Rectangular Polygon	U	Kelphope	Livestock Enclosure
346	351195	658125	37	35	Square	U	S of Kelphope	Livestock Enclosure
347	350880	658208	19	7	Rectangular	U	SW of Kelphope	Field Enclosure (Rectangular)
348	353224	656041	17	14	Square?	Stone?	W of Soonhope Burn	Livestock Pen
349	352902	658532	x	13	Circular	Stone	W of Bellhill Burn	Sheepfold (Circular Stone)
350	351173	658917	x	10	Circular	Turf	Kelphope Burn	Farmstead
351	351103	658933	33	24	Square	Turf	Kelphope Burn	Livestock Enclosure
352	357791	652976	17	16	Complex Square	Stone?	NW of Broadshawrig	Farmstead
353	357666	653357	x	x	Open Circular	Stone	NW of Broadshawrig	Sheep Stell C
354	357786	653149	x	16	Circular	Turf	NW of Broadshawrig	Sheepfold (Circular Turf)
355	350548	657374	130	102	rectangular	U	E of Hillhouse Burn	Livestock Enclosure

No	Easting	Northing	length (m)	width/ diameter (m)	Shape	Material	Nearest Toponym	
356	352913	653989	25	17	Complex	Stone	Longcroft	Sheep enclosure (Complex)
357	352951	653971	46	22	Complex	U	Longcroft	Sheep enclosure (Complex)
358	355279	658117	x	13	circular	Drystone	E of Longhope Rig	Sheepfold (Circular Stone)
359	350018	654906	x	x	Triangular Polygon	U	S of Carfrae	Field Enclosure (Corner)
360	350899	658542	19	9	Rectangular	U	W of Kelphope	Livestock Pen
361	358051	652821	21	16	Rectangular Polygon	U	Broadshawrig	Livestock Enclosure
362	358064	659054	35	14	Rectangular	Stone	E of Dye Water	Sheep enclosure (Complex)
363	357986	659097	8	7	Spoked Square	Stone?	E of Dye Water	Sheepfold (Other)
364	358077	652829	22	22 / 9	Complex	U	Broadshawrig	Sheep enclosure (Complex)
365	353667	659029	x	15	Circular	Stone?	SW Lamb Rig	Sheepfold (Circular Stone)
366	350356	659065	x	x	Rectangular	U	SE of Kelphope Hill	Livestock Pen
367	350318	659039	18	7	Rectangular	U	SE of Kelphope Hill	Livestock Pen
368	350260	659072	22	17	Rectangular	U	SE of Kelphope Hill	Livestock Pen
369	352319	655032	x	x	Rectangular	U	SW of Hog Hill	Livestock Enclosure
370	350135	655152	x	x	Complex	U	Carfrae	Sheep enclosure (Complex)
371	350018	655080	x	x	Rectangular	U	Carfrae	Livestock Pen
372	353137	653816	x	x	Complex	U	NE of Whalp Law	Sheep enclosure (Complex)
373	350581	655168	x	x	Complex Rectangular	U	Hillhouse	Sheep enclosure (Complex)
374	354024	650080	x	x	Square	U	NE of Huntington	Field Enclosure (Corner)
375	356365	650143	x	x	Complex Rectangular	U	W of The Scawart	Field Enclosure (Corner)
376	358127	650026	x	x	Complex Square	Stone	NE of Spotts Burn	Sheep Dip / Sheep Wash
377	359721	650787	x	x	Complex	U	Bruntaburn	Livestock Enclosure
378	350972	659084	x	x	Rectangular	U	S of Friar's Nose	Sheepfold (Other)
379	350711	655078	x	x	Rectangular	U	Hillhouse	Livestock Enclosure
380	354546	651703	8	8	Square	U	S of Earnsclough	Sheepfold (Other)
381	354574	652853	11	11	Square	U	Trow Burn	Livestock Pen

No	Easting	Northing	length (m)	width/ diameter (m)	Shape	Material	Nearest Toponym	
382	354571	651683	22	12	Rectangular	U	Trow Burn	Livestock Enclosure
383	354647	651568	16	16	Square	Turf	Earns Cleugh	Livestock Enclosure
384	354327	651672	x	15	Circular	Drystone	SW of Earnscleugh	Sheepfold (Circular Stone)
385	354353	651702	x	16	Circular	Drystone	SW of Earnscleugh	Sheepfold (Circular Stone)
386	354761	652648	x	18	Circular	Drystone	SE of Willowcleugh Hill	Sheepfold (Circular Stone)
387	354529	653019	x	11	Circular	Drystone	N of Trow Burn	Sheepfold (Circular Stone)
388	355513	653536	x	19	Circular	Drystone	E of Drakestruther	Sheepfold (Circular Stone)
389	355219	653178	x	18	Open Circular	Stone	SE of Drakestruther	Sheep Stell C
390	355176	652834	48	33	Rectangular	U	SE of Trow Hill	Sheepfold (Other)
391	350318	657802	x	x	Circular Spoked	Stone	N of Hillhouse Burn	Sheepfold (Circular Turf)
392	350272	656937	x	x	Circular	U	NE of Fairnylees	Sheepfold (Circular Stone)
393	354263	651616	24	13	Rectangular	U	SW of Earnscleugh	Field Enclosure (Rectangular)
394	353464	657818	x	x	Complex Rectangular	U	S of Soonhope Burn	Livestock Pen
395	350960	654220	x	x	Complex Rectangular	U	S of Kelphope Burn	Livestock Enclosure
396	356508	654528	x	15	Circular	Drystone	S of Earnscleugh Water	Sheepfold (Circular Stone)
397	352155	652236	x	x	Triangular	U	S of Cleekhimin Bridge	Field Enclosure (Corner)
398	354531	652033	x	x	Rectangular	U	Earnscleugh Water	Field Enclosure (Rectangular)
399	354854	652274	x	x	Complex	U	NE Earnscleugh Water	Sheep enclosure (Complex)
400	354892	652352	x	x	Complex Rectangular	U	NE Earnscleugh Water	Sheep enclosure (Complex)
401	352633	651151	x	x	Rectangular	U	S of Lylestone	Field Enclosure (Corner)
402	351800	651906	x	x	Rectangular	U	E of Wiselawmill	Farmstead
403	363706	669429	22.24	16.17	Complex Circular	DryStone	Dunbar Common	Sheepfold (Circular Stone)
404	360870	669494		19.51	Circular	Turf?	Thorters Reservoir	Sheepfold (Circular Turf)
405	367005	669551		12.64	Circular	Turf?	Branslyhill	Sheepfold (Circular Turf)
406	358389	652519		16	Circular	Turf	Howebog	Sheepfold (Circular Turf)
407	361522	669252		21	Circular	Turf?	Clint's Law	Sheepfold (Circular Turf)

No	Easting	Northing	length (m)	width/ diameter (m)	Shape	Material	Nearest Toponym	
408	354529	656024	x	x	Complex	Stone	Glenburnie	Sheep enclosure (Complex)
409	372166	669347	145.77	43.58	square		Sisters Cleugh	Livestock Pen
410	364129	668990		10.44	Circular	Drystone	Lamb Hill	Sheepfold (Circular Stone)
411	371630	668794	91.9	90.46	Complex Polygon	Drystone	Crow Cleugh	Livestock Pen
412	371921	668781	159.09	94.73	Complex Rectangular		Wightman Hill	Livestock Pen
413	361120	668576	24.75	17.1	Rectangular		White Castle Fort	Livestock Enclosure
414	366892	668570		5	Circular		Tay Burn	Sheepfold (Circular Stone)
415	370780	668729	10.72	11.38	Complex Polygon		Easter Wide Hope Stream	Livestock Pen
416	370845	668539	11.97	9.13	Rectangular		Easter Wide Hope Stream	Livestock Pen
417	364899	668392		11.62	Circular	Drystone	West Burn	Sheepfold (Circular Stone)
418	366201	668469	66.61	40.37	Complex Polygon (L)		Beltondod	Sheep enclosure (Complex)
419	370586	669009	12.23	7.2	Rectangular	Drystone	Wester Wide Hope	Livestock Pen
420	371866	669181	11.7	10.9	Rectangular	Drystone	Sisters Cleugh	Livestock Pen
421	365278	667783		14.96	Circular	Drystone	West Burn	Sheepfold (Circular Stone)
422	365368	667629	11.03	4.74	Rectangular	Drystone	Yadlee (stone circle)	Farmstead
423	362390	667392		28.51	double Circular		Whiteadder water	Sheepfold (Circular Turf)
424	364699	667285		12.12	Circular	Drystone	Stonefold Rig	Sheepfold (Circular Stone)
425	365673	667349		15.13	Circular	Drystone	Bothwell water	Sheepfold (Circular Stone)
426	373894	666792		17.68	Circular	Drystone	Eyewater	Sheepfold (Circular Stone)
427	370958	667103		23.62	Circular	Turf?	Yearn Gill	Sheepfold (Circular Turf)
428	363296	666749		21.46	Circular	Drystone	Green Cleugh	Sheepfold (Circular Stone)
429	362492	666403		16.73	Circular		Haselly Burn	Sheepfold (Circular Stone)
430	365085	666456		13.85	Circular	Drystone	Haselly Cleugh	Sheepfold (Circular Stone)
431	366707	666542	37.1	27.85	Complex Polygon		Caldercleugh	Sheep enclosure (Complex)
432	367129	666441		14.79	Circular	Drystone	Chrystal Knowe	Sheepfold (Circular Stone)
433	366146	666091		12.56	Circular		Elsie Cleugh Rig	Sheepfold (Circular Stone)

No	Easting	Northing	length (m)	width/ diameter (m)	Shape	Material	Nearest Toponym	
434	363999	665975		13.72	Circular		Writerspath Burn	Sheepfold (Circular Stone)
435	367774	665987	157.77	82.6	Complex Polygon	Drystone	Crichness	Sheepfold (Other)
436	367900	665783		17.52	Circular	Drystone	Crichness	Sheepfold (Circular Stone)
437	372008	665715		20.88	Circular		Ewelairs Hill	Sheepfold (Circular Turf)
438	363919	665451		20.68	Circular		Whiteadder water	Sheepfold (Circular Turf)
439	367772	665429	66.6	31.8	Complex		Birk Cleugh	Farmstead
440	372120	665325	44.47	29.72	Complex Polygon	Drystone	Birky Cleugh	Sheep enclosure (Complex)
441	361919	665013		13.57	Circular		Crow stones	Sheepfold (Circular Stone)
442	367953	665237	29.43	18.16	Complex Polygon		Birk Cleugh	Field Enclosure (Corner)
443	372732	665155	35.64	16.91	Polygon		Birky Cleugh	Field Enclosure (Rectangular)
444	364955	664790		16.34	Circular	Drystone	Gamashiel Castle (remains of)	Sheepfold (Circular Stone)
445	371658	664797	41.66	34.88	Complex Polygon		Monymnut water	Sheep enclosure (Complex)
446	373036	664795	105.89	38.6	Polygon	Drystone	Nether Monymnut Cottages	Field Enclosure (Corner)
447	374303	664839	38	43.46	Rectangular	Drystone	Luckie Shiel	Livestock Enclosure
448	363293	664516		26.04	Circular	Turf?	Kell Burn	Sheepfold (Circular Turf)
449	363323	664531		15.36	Circular	Turf?	Kell Burn	Sheepfold (Circular Turf)
450	365798	664249		15.7	Circular	Drystone	Gamelsheil Burn	Sheepfold (Circular Stone)
451	366712	664416		11.76	Circular	Drystone	Snails Cleugh	Sheepfold (Circular Stone)
452	369711	664372	65.82	18.58	Complex Polygon		Peat Law	Sheep enclosure (Complex)
453	361445	664074	21.06	20.98	Complex Rectangular		Goes Law	Sheepfold (Other)
454	361524	664122		14.88	Circular		Goes Law	Sheepfold (Circular Turf)
455	362587	664108	43.97	27.06	Complex Polygon		Mayshiel Lodge	Sheep enclosure (Complex)
456	363158	664187		13.11	Circular	Drystone	Over Burn	Sheepfold (Circular Stone)
457	364071	664247		25.33	Complex Circular?	Turf	Whiteadder water	Sheepfold (Circular Turf)
458	364324	664081		21.59	Complex Circular		Whiteadder reservoir	Sheepfold (Circular Turf)

No	Easting	Northing	length (m)	width/ diameter (m)	Shape	Material	Nearest Toponym	
459	369372	664203	10.22	6.45	Rectangular		Philip Burn	Field Enclosure (Rectangular)
460	362156	663867	9.34	4.96	Rectangular	Stone	Goes Law	Sheepfold (Other)
461	365631	663771	25.15	17.45	Complex Polygon (L)		Gamelshiel	Sheep enclosure (Complex)
462	365768	663883		40	Circular	Turf?	Fox Covert	Sheepfold (Circular Turf)
463	371129	663877	64.75	10.34	Complex Polygon		Bentyhowe Wood	Sheep enclosure (Complex)
464	372345	663919	40.36	12.2	Complex Rectangular		Inner Hill	Sheep enclosure (Complex)
465	362003	663604		13.65	Circular		Mayshiel lodge	Sheepfold (Circular Stone)
466	369276	663528	19.27	15.56	Polygon		Harehead	Livestock Pen
467	369378	663585	11.14	4.72	Polygon		Harehead	Field Enclosure (Rectangular)
468	366809	663071		15.67	Circular		Berrybank Wood	Sheepfold (Circular Turf)
469	369010	663168	64.54	34.38	Complex rectangular	Drystone	Harehead	Sheep enclosure (Complex)
470	361317	662777		17.35	Circular		Cow Cleugh	Sheepfold (Circular Turf)
471	364024	662032		19.62	Circular	Drystone	Fee Cleugh	Sheepfold (Circular Stone)
472	365546	662998		13.54	Circular		Whiteadder reservoir	Sheepfold (Circular Stone)
473	364391	662479		18.53	Circular		Fee Cleugh	Sheepfold (Circular Stone)
474	361725	662008		17.91	Circular	Drystone	Easter Hare Cleugh	Sheepfold (Circular Stone)
475	362096	662103		16.83	Circular		Herd's Hill	Sheepfold (Circular Stone)
476	360913	661589		11.29	Circular	Drystone	Hare Cleugh	Sheepfold (Circular Stone)
477	368001	661806	26.75	13.44	Rectangular		Cranshaws Castle	Livestock Pen
478	368266	661920	33.54	18.37	Complex Polygon		Cranshaws Farm	Sheep enclosure (Complex)
479	366283	661537		12.11	Circular	Drystone	Scarlaw Cleugh	Sheepfold (Circular Stone)
480	362837	660505		18.4	Circular	Turf	Killpallet	Sheepfold (Circular Turf)
481	362870	660540	18.96	17.81	Rectangular		Killpallet	Sheepfold (Other)
482	364396	660238	33.21	23.44	Complex Polygon		Wester Burn	Sheepfold (Other)
483	364302	659703		16.24	Circular	Drystone	Wester Burn	Sheepfold (Circular Stone)
484	364634	659648		15.71	Circular	Drystone	Wester Burn	Sheepfold (Circular Stone)

No	Easting	Northing	length (m)	width/ diameter (m)	Shape	Material	Nearest Toponym	
485	365800	659741		17.32	Circular	Drystone	Horseupcleugh Rig	Sheepfold (Circular Stone)
486	368085	659751		11.81	Complex Circular	Drystone	Howard Burn	Sheepfold (Circular Stone)
487	373287	659641	73.8	25.09	Rectangular		Quarry Wood	Sheep enclosure (Complex)
488	368481	659287	33.67	23.99	Complex Polygon (L)		Planten End	Sheep enclosure (Complex)
489	368665	659318	68.36	13.41	Complex		Planten End	Sheep enclosure (Complex)
490	370435	659127	52.77	17.26	Complex Polygon		Dyeshaugh	Sheep enclosure (Complex)
491	362255	659013		20.67	Complex Circular	Drystone	Long Cairn	Sheepfold (Circular Stone)
492	360915	658717		13.18	Circular	Drystone	Dye Water	Sheepfold (Circular Stone)
493	361098	658866	39.76	29.48	Complex Polygon		Dye Water	Livestock Enclosure
494	361995	658470		20.22	Circular	Drystone	Dye Water	Sheepfold (Circular Stone)
495	363518	658552	12.74	5.52	Rectangular	Drystone	Pyatshaw Knowe	Field Enclosure (Rectangular)
496	365849	658605	33.37	13.34	Complex Polygon	Drystone	Dipper Wood	Sheep enclosure (Complex)
497	362670	658149	47.25	17.92	Complex Polygon	Drystone	Byreclough	Sheep enclosure (Complex)
498	364525	658345	36.42	12.03	Rectangular	Drystone	Trottingshaw Cottage	Livestock Enclosure
499	364261	658085		17.11	Circular	Drystone	Trottingshaw Cottage	Sheepfold (Circular Stone)
500	364618	657924		14.24	Circular	Drystone	Trottingshaw Cottage	Sheepfold (Circular Stone)
501	365141	658121	30.18	15.68	Complex Rectangular	Drystone	Trottingshaw Cottage	Sheep enclosure (Complex)
502	362353	658384		7.66	Circular	Drystone	Byreclough	Sheepfold (Circular Turf)
503	362884	657774		13.76	Circular	Drystone	Byreclough	Sheepfold (Circular Stone)
504	363649	657931		20.17	Circular	Turf	Wester Stop Cleugh	Sheepfold (Circular Turf)
505	363909	657669		13.06	Circular	Drystone	Wester Stop Cleugh	Sheepfold (Circular Stone)
506	363974	657869	71.05	9.08	Circular	Drystone	Dunside Wood	Sheepfold (Circular Stone)
507	365000	657691		15.83	Circular	Drystone	Pow's Cleugh	Sheepfold (Circular Stone)
508	365148	657897		18.24	Circular	Drystone	Pow's Cleugh	Sheepfold (Circular Stone)
509	365242	668176	25.53	9.7	Complex Rectangular		Beltondod	Farmstead
510	365583	668451		16.17	Circular	Turf	Dunbar Common	Sheepfold (Circular Stone)

No	Easting	Northing	length (m)	width/ diameter (m)	Shape	Material	Nearest Toponym	
511	364430	667499	87.21	26.14	Complex rectangular		Stonefold Rig	Sheep enclosure (Complex)
512	367345	666546		16.71	Circular	Drystone	Crystal Knowe	Sheepfold (Circular Stone)
513	373705	666110		9.36	Circular	Drystone	Corse Law	Sheepfold (Circular Stone)
514	367533	666092	28.09	24.58	Complex Rectangular		Corse Law	Livestock Enclosure
515	373254	664989	38.39	16.31	Complex Polygon		Horse Cleugh	Sheep enclosure (Complex)
516	366605	666102	40.48	23.51	Rectangular		Elsie Cleugh	Sheepfold (Other)
517	363322	664486		30	Circular	Turf?	Kell Burn	Sheepfold (Circular Turf)
518	361392	669376		21	Circular	Turf	Clint's Law	Sheepfold (Circular Turf)
519	366588	665967		17	Circular	Turf	Elsie Cleugh	Sheepfold (Circular Turf)
520	366568	665945		17	Circular	Turf	Elsie Cleugh	Sheepfold (Circular Turf)
521	366120	666094		18	Circular	Turf	Elsie Cleugh Rig	Sheepfold (Circular Turf)
522	366160	666121	35	35	Square	Turf	Elsie Cleugh Rig	Sheep enclosure (Complex)
523	366121	666060	42	30	Rectangular	Turf	Elsie Cleugh Rig	Sheepfold (Other)
524	366178	666203	26	26	Square	Turf	Elsie Cleugh Rig	Sheepfold (Other)
525	366239	666225	48	14	Rectangular	Turf	Elsie Cleugh Rig	Sheepfold (Other)
526	362992	657641	25	25	Square	Turf	Dunside Hill	Livestock Enclosure
527	363018	657619		27	Circular	Turf	Dunside Hill	Livestock Enclosure
528	365281	668264		24	Circular	Turf	Beltondod	Sheepfold (Circular Turf)
529	365244	668007	10	10	Square	Turf	Beltondod	Livestock Pen
530	360941	668965	48	34	Irregular	Turf	Fallow Green Rig	Farmstead
531	360724	654696			Complex	stone	Rutherford Cairn 2	Keyhole Fold
532	369004	650864	25	22	rectangular	stone	Bedshiel 1	Sheep enclosure (Complex)
533	365017	651607	20	16	Rectangular	stone	Blackadder Water	Field Enclosure (Corner)
534	362835	655806	15	15	circular	Drystone	Blackhag Burn	Sheepfold (Circular Stone)
535	360335	655814	12	12	circular	Drystone	Blythe Edge	Sheepfold (Circular Stone)
536	369740	651834	12	12	circular w/1 spoke	stone	Bonnet Plantation 1	Sheepfold (Circular Stone)

No	Easting	Northing	length (m)	width/ diameter (m)	Shape	Material	Nearest Toponym	
537	368084	659751	14	14	circular	Drystone	Comfortlee Plantation	Sheepfold (Circular Stone)
538	363793	655795	18	18	circular	Drystone	Corby Scar 1	Sheepfold (Circular Stone)
539	360391	654067	15	15	circular	Drystone	Craigie Sike 1	Sheepfold (Circular Stone)
540	366724	656347	12	12	circular	Drystone	Windy Law 1	Sheepfold (Circular Stone)
541	365250	658675	27	23	Rectangular - 3 SIDED?	stone	Dipper Wood 1	Field Enclosure (Corner)
542	365850	658604	14	14	rectangular/complex	stone	Dipper Wood 2	Sheep enclosure (Complex)
543	369654	654499	21	9	Semi circular	stone	Dirrie Well Shelter 1	Sheep Stell C
544	369917	653382	57	37	Y stell	stone	Dirrie Well Shelter 2	Sheep Stell Y
545	368113	655160	15	15	circular	Drystone	Dirrington Hill	Sheepfold (Circular Stone)
546	368379	654693	20	20	semi circular?	turf/stone?	Dirrington Lees Shelter	Sheep Stell C
547	368594	655491	26	23 (widest), 6(narrowest)	complex, t-shape Rectangulars	stone	Dirrington Sheep Pens	Farmstead
548	359556	654702	13	13	circular	Drystone	Easter Burn	Sheepfold (Circular Stone)
549	366597	652137	36	14	rectangular	stone	Evelaw	Field Enclosure (Corner)
550	365754	655768	14	14	circular	Drystone	Ewestell Knowe	Sheepfold (Circular Stone)
551	365196	655835	14	14	circular	Drystone	Ewestell 2	Sheepfold (Circular Stone)
552	368474	653605	11 (one wall)	9 (other wall)	corner of a Rectangular	stone	Flass Wells Shelter 1	Sheep Stell V
553	368240	653869	20	20	Y stell	stone	Flass Wells Shelter 2	Sheep Stell Y
554	368205	654438	15	15	circular	Drystone	Flasswells Rig	Sheepfold (Circular Stone)
555	363452	653850	49	27	rectangular	stone	Banishiel Rig	Sheep enclosure (Complex)
556	360668	651876	14	18	circular/oval	turf/stone?	Raeclough Covert	Sheepfold (Circular Stone)
557	360386	654070	14	14	circular	Drystone	Craigie Sike 3	Sheepfold (Circular Stone)
558	363787	655775	19	19	semi circular	stone	Corby Scar 2	Sheep Stell C
559	366719	656341	12	12	circular	Drystone	Windy Law 2	Sheepfold (Circular Stone)
560	365660	655067	14	14	circular	Drystone	Sting Law	Sheepfold (Circular Stone)
561	367507	655028	12	12	circular	turf?	Cross Burn	Sheepfold (Circular Stone)

No	Easting	Northing	length (m)	width/ diameter (m)	Shape	Material	Nearest Toponym	
562	361237	653325	18	18	circular 1 spoke	stone	Harecleugh Forest	Sheepfold (Circular Stone)
563	369777	651885	151	86	Trapeziodal	turf	Bonnet Plantation 2	Livestock Enclosure
564	370996	652245	10	10	circular 2 spokes	stone	Shiningpool Moss Pens	Keyhole Fold
565	370521	652385	68	44	rectangular 1 spoke	stone	Shiningpool Moss	Sheep enclosure (Complex)
566	369011	651743	14	14	circular	turf?	Brown Rig	Sheepfold (Circular Turf)
567	372241	654454		14	circular	Turf	Upper Henlaw Bridge	Sheepfold (Circular Turf)
568	357798	650768	15	15	circular	Drystone	Spotts Burn	Sheepfold (Circular Stone)
569	373882	652099		15	circular	Turf	Well Cleugh	Sheepfold (Circular Turf)
570	359081	651072		17	circular	turf	Scoured Rig	Sheepfold (Circular Turf)
571	361361	653785	14	14	circular 1 spoke	stone	Harecleugh Hill	Sheepfold (Circular Stone)
572	367297	654554	20	20	circular	Drystone	Southside Plantation	Sheepfold (Circular Stone)
573	370785	653335	14	14	circular 2 spokes	stone	Inch Moor	Keyhole Fold
574	367994	655775	140	125	Rectangular	Turf	Cross Burn	Livestock Enclosure
575	370504	653674	30	11	double circular "spectacle fold"	stone	Mutton Slack	Spectacle Fold
576	362993	653650	25	25	circular	Drystone	Harecleugh Burn	Sheepfold (Circular Stone)
577	363108	656026	16	14	wonky circle	stone	Watch Water	Sheepfold (Circular Stone)
578	359176	652389	17	17	circular	Drystone	Gairmur 1	Sheepfold (Circular Stone)
579	358799	652576	17	17	Complex	Drystone	Gairmur 2	Sheep enclosure (Complex)
580	359125	652833	16	16	Square	stone	Gairmur Rig	Livestock Enclosure
581	362614	657064	12	12	circular 1 spoke	stone	Hall Burn	Sheepfold (Circular Stone)
582	369750	653688			y stell	stone	Halliwell Rig Stell	Sheep Stell Y
583	369103	653061			y stell	stone	Dirrington Little Law Stell	Sheep Stell Y
584	371880	665124		23	circular	Turf	White Cleugh	Sheepfold (Circular Turf)
585	360921	658715	14	14	circular	Drystone	Heron Scar	Sheepfold (Circular Stone)
586	360863	658870	13	13	circular	Drystone	Heron Scar Sheep Pens	Sheepfold (Circular Stone)

No	Easting	Northing	length (m)	width/ diameter (m)	Shape	Material	Nearest Toponym	
587	367799	655651	25	25	wonky circle	stone	Horsepark Plantation	Sheepfold (Circular Stone)
588	365804	659721	19	19	circular	Drystone	Horseupcleugh Rig	Sheepfold (Circular Stone)
589	362193	648192	28	15	trapezium/complex	stone	Howlett's Ha	Field Enclosure (Corner)
590	366448	651405			complex	stone	Hurd Law Folds	Field Enclosure (Corner)
591	363448	659225			Rectangular	stone/turf?	Lamb Hill	Livestock Enclosure
592	362743	652370	70	25	trapezium/complex	stone	Loch Wood	Field Enclosure (Corner)
593	362386	654438	14	14	circular	Drystone	Harecleugh Hill 2	Sheepfold (Circular Stone)
594	360349	658516	13	13	circular	Drystone	Meikle Namels Cleugh	Sheepfold (Circular Stone)
595	361997	658469	21	21	circular	Drystone	Nether Knowe	Sheepfold (Circular Stone)
596	364999	657678	17	17	circular	Drystone	Pow's Cleugh	Sheepfold (Circular Stone)
597	359792	655650	17	17	circular	Drystone	Pulpit Cairn	Sheepfold (Circular Stone)
598	367387	653969	17	17	circular	Drystone	Quarrelhill Plantation 1	Sheepfold (Circular Stone)
599	367155	653633	12	12	circular	Drystone	Quarrelhill Plantation 2	Sheepfold (Circular Stone)
600	366869	655914	51	21	rectangular/complex	stone	Rawburn	Sheep enclosure (Complex)
601	361394	654666	14	14	circular	Drystone	Rutherford's Cairn	Sheepfold (Circular Stone)
602	369545	652855			y stell	stone	Sale Moss Shelter 1	Sheep Stell Y
603	369845	652436	43	43	cross stell	stone	Sale Moss Shelter 2	Sheep Stell X
604	369858	652428	39	39	Square	Turf	Sale Moss	Farmstead
605	366524	662166	12	12	circular	Drystone	Scarlaw Rig	Sheepfold (Circular Stone)
606	365347	656243	13	13	circular	turf?	Scarlaw Wood	Sheepfold (Circular Turf)
607	363663	656404	15	15	circular	Drystone	Shielburn Wood	Sheepfold (Circular Stone)
608	366714	664419	11	11	circular	Drystone	Snails Cleugh North	Sheepfold (Circular Stone)
609	366987	663795	34	34	Rectangular	Drystone	Snails Cleugh South	Field Enclosure (Rectangular)
610	369816	653027	12	12	circular with 1 spoke	Drystone	Stoneypark Burn	Sheepfold (Circular Stone)
611	360912	648260	40	25	rectangular	stone/turf?	Thornydykes	Field Enclosure (Corner)
612	362693	652610	26	12	rectangular complex	?	West Woodhead	Sheep enclosure (Complex)

No	Easting	Northing	length (m)	width/ diameter (m)	Shape	Material	Nearest Toponym	
613	364262	658077	18	18	circular	Drystone	Trottingshaw/Stony Side	Sheepfold (Circular Stone)
614	367275	657438	36	15	rectangular complex	Drystone	Tupknowes Cairn	Sheep enclosure (Complex)
615	364372	652339	36	32	rectangular complex	Drystone	Wedderlie	Sheep enclosure (Complex)
616	364635	659642	18	18	circular	Drystone	Wester Burn	Sheepfold (Circular Stone)
617	363916	657667	14	14	circular	Drystone	Wester Stop Cleugh	Sheepfold (Circular Stone)
618	368289	652631	85	19	complex	Drystone	White Knowe	Sheep enclosure (Complex)
619	368562	654442	14	14	circular	turf	Kippetlaw	Sheepfold (Circular Stone)
620	366623	652197	10	5	3 side Rectangular	Drystone	Evelaw Burn Sheep Wash	Sheep Dip / Sheep Wash
621	367574	655057	13	13	circular	Drystone	Rawburn Cottage	Sheepfold (Circular Stone)
622	363596	653364	26	26	circular 1 spoke	Drystone	Midburn	Sheepfold (Circular Stone)
623	358741	651574	38	8	Semicircular (stell?)	Drystone	Scoured Rig	Sheep Stell C
624	364291	656558	20	20	square	Drystone	Easter Grain	Sheepfold (Other)
625	365157	656720	43	26	rectangular complex	Drystone	Scar Law	Sheep enclosure (Complex)
626	370441	659124	52	15	Rectangular	Drystone	Dyeshaugh	Livestock Enclosure
627	370595	658808	15	6	Rectangular	Stone/Turf?	Crook Burn East	Field Enclosure (Rectangular)
628	370208	658346	10	2	Rectangular	Stone?	Muirton	Livestock Enclosure
629	370351	657829	20	2	Rectangular	Stone/Turf?	Waterpark Wood	Field Enclosure (Rectangular)
630	370841	658051	12	5	Irregular	Turf?	Dye Water	Sheep Dip / Sheep Wash
631	371408	658430	9	3	Rectangular	Stone/Turf?	Moor Plantation	Field Enclosure (Rectangular)
632	372690	659594	33	20	Rectangular	Stone/Turf?	Rigfoot	Livestock Enclosure
633	371443	657303		16	Circular	Turf	Otterburn	Sheepfold (Circular Turf)
634	371627	657297	32	22	Rectangular	Turf	Otterburn	Sheepfold (Other)
635	371825	657031		22	Circular	Turf	Otterburn	Sheepfold (Circular Turf)
636	372955	657698	9	2	Rectangular	Stone/Turf?	Hillwood	Field Enclosure (Rectangular)
637	371871	657248		22	Circular	Turf	Otterburn	Sheepfold (Circular Turf)
638	372365	656510		17	Circular	Turf	Carles Cleugh	Sheepfold (Circular Turf)

No	Easting	Northing	length (m)	width/ diameter (m)	Shape	Material	Nearest Toponym	
639	372119	656623		14	Circular	Turf	Carles Cleugh	Sheepfold (Circular Turf)
640	372493	656507		9	Circular	Turf	Carles Cleugh	Sheepfold (Circular Turf)
641	374381	655581	10	5	Rectangular	Turf	Rams Cleugh	Field Enclosure (Rectangular)
642	372923	655176	23	21	Roughly Circular	Turf	Kirk Hill	Sheepfold (Circular Turf)
643	371074	655340		12	Circular	Turf	Stobswood	Sheepfold (Circular Turf)
644	376063	655209	25	19	Roughly Circular	Stone/Turf?	Hairlawcraigs Burn	Farmstead
645	371189	657348	107	54	Irregular	Stone/Turf?	Otterburn	Farmstead
646	374907	654399		15	Circular	Turf	Back Burn	Sheepfold (Circular Turf)
647	372786	653712		18	Circular	Turf	Henlaw Bogs	Sheepfold (Circular Turf)
648	372788	654038		11	Circular	Turf	Blackrig	Sheepfold (Circular Turf)
649	372863	654013		10	Circular	Turf	Blackrig	Sheepfold (Circular Turf)
650	372413	654052		15	Circular	Turf	Henlaw Bogs	Sheepfold (Circular Turf)
651	371800	653202		12	Circular	Turf	Lamb Rig	Sheepfold (Circular Turf)
652	371285	652920	15	15	3 spokes	Stone	Washingpool Burn	Sheep Stell Y
653	370641	653027	25	25	3 spokes	Stone	Under Ram Bog	Sheep Stell Y
654	370279	653246	21	10	Semi circle	Stone	Stoneypark Burn	Sheep Stell C
655	372225	653308	76	46	T shape	Stone	Foul Burn	Sheep Stell T
656	372360	653243	47	26	T shape	Stone	Foul Burn	Sheep Stell T
657	372044	666790		21	Circular	Turf	Heart Law	Sheepfold (Circular Turf)
658	370528	652392	73	43	Rectangular	Stone	Shingpool Moss	Sheep enclosure (Complex)
659	371006	652240		12	Circular	Drystone	Shingpool Moss	Sheepfold (Circular Stone)
660	370687	652036	20	5	Rectangular	Stone	Kettelshiel	Field Enclosure (Corner)
661	376492	652464	15	7	Rectangular	Stone/Turf?	Langton	Field Enclosure (Rectangular)
662	376051	652101	5	4	Rectangular	Stone/Turf?	Langton	Field Enclosure (Rectangular)
663	373360	652594	20	15	Rectangular	Stone/Turf?	Old Langtonlees	Sheep enclosure (Complex)
664	377555	653844	22	2	Rectangular	Stone/Turf?	The Geans	Field Enclosure (Rectangular)

No	Easting	Northing	length (m)	width/ diameter (m)	Shape	Material	Nearest Toponym	
665	377528	653723	25	3	Rectangular	Stone/Turf?	The Geans	Field Enclosure (Rectangular)
666	376984	654017	11	3	Rectangular	Stone/Turf?	The Flats	Field Enclosure (Rectangular)
667	376885	654332	16	8	Irregular	Stone/Turf?	The Flats	Field Enclosure (Rectangular)
668	377184	654221	12	2	Rectangular	Stone/Turf?	Borthwick Castle	Field Enclosure (Rectangular)
669	376627	653607	12	3	Rectangular	Stone	Wellrig	Field Enclosure (Rectangular)
670	376229	653863	18	5	Rectangular	Stone	Wellrig Burn	Field Enclosure (Rectangular)
671	375590	653979	44	23	Rectangular	Stone	Hardens Burn	Sheep enclosure (Complex)
672	375192	653882	46	14	Irregular	Stone/Turf?	Hardens	Field Enclosure (Rectangular)
673	376201	653171	11	5	Rectangular	Stone/Turf?	Langton Mains	Field Enclosure (Rectangular)
674	376355	653150	15	7	Irregular	Stone/Turf?	Langton Mains	Field Enclosure (Rectangular)
675	375777	653653	12	4	Rectangular	Stone/Turf?	Langton Castle	Field Enclosure (Rectangular)
676	376284	655136	13	6	Irregular	Stone/Turf?	Hairlawgraigs	Field Enclosure (Corner)
677	371776	655100		17	Circular	Stone/Turf?	Hen Sike	Sheepfold (Circular Stone)
678	370986	655341	20	20	Square	Stone/Turf?	Henlaw Woods	Sheep enclosure (Complex)
679	369983	655688	30	30	3 spokes	Stone	Kippetlaw Burn	Sheep Stell Y
680	371770	655955	11	2	Rectangular	Stone/Turf?	Stobswood Lees	Field Enclosure (Rectangular)
681	371523	655571	11	2	Rectangular	Stone/Turf?	Stobswood Lees	Sheep Shelter (Structure)
682	370785	653534	30	30	3 spokes	Stone	Upper Ram Bog	Sheep Stell Y
683	375978	653885	10	5	Rectangular	Stone	Hardens Burn	Field Enclosure (Corner)
684	371094	655910	12	3	Rectangular	Stone/Turf?	Black Sike	Field Enclosure (Rectangular)
685	371778	656328	60	32	Irregular	Stone	Selburn Rig	Sheep enclosure (Complex)
686	377233	656131	10	3	Rectangular	Stone/Turf?	Kaim	Field Enclosure (Rectangular)
687	377696	656114	10	3	Rectangular	Stone/Turf?	Oxdean Tower	Field Enclosure (Rectangular)
688	377717	656146	10	3	Rectangular	Stone/Turf?	Oxdean Tower	Field Enclosure (Rectangular)
689	378185	656290	8	2	Rectangular	Stone/Turf?	Oxdean	Field Enclosure (Rectangular)
690	377583	656362	10	2	Rectangular	Stone/Turf?	Kaim	Field Enclosure (Rectangular)

No	Easting	Northing	length (m)	width/ diameter (m)	Shape	Material	Nearest Toponym	
691	377941	656618	8	3	Rectangular	Stone/Turf?	Barramill	Field Enclosure (Rectangular)
692	378364	656426	10	3	Rectangular	Stone/Turf?	Cumledge	Field Enclosure (Rectangular)
693	375670	659429	86	50	Irregular	Stone/Turf?	Hen Tow Bog	Sheep enclosure (Complex)
694	376557	659278	7	2	Rectangular	Stone/Turf?	Law Plantation	Field Enclosure (Rectangular)
695	370394	652974	19	18	Irregular	Stone	Washinpool Burn	Field Enclosure (Rectangular)
696	371769	655845	65	30	Rectangular	Metal?	Stobswood	Sheep enclosure (Complex)
697	371848	656847		7	Circular	Drystone	Carles Cleugh	Sheepfold (Circular Stone)
698	374682	657671	13	8	Rectangular	Stone/Metal	Burnhouses	Sheepfold (Circular Stone)
699	375854	656801	19	18	Irregular	Stone/Turf?	Birkenside Plantation	Field Enclosure (Rectangular)
700	373115	653929	40	20	Rectangular	Metal?	Langtonlees	Sheep enclosure (Complex)
701	371545	654655		13	Circular	Turf	Hen Sike	Sheepfold (Circular Turf)
702	372081	654668		12	Circular	Turf	Henlaw Cottage	Sheepfold (Circular Turf)
703	372081	654631		15	Circular	Turf	Henlaw Cottage	Sheepfold (Circular Turf)
704	372714	654884		15	Circular	Turf	Kirk Hill	Sheepfold (Circular Turf)
705	372702	653582		18	Circular	Turf	Blackrig Plantation	Sheepfold (Circular Turf)
706	372684	653485		13	Circular	Turf	Blackrig Plantation	Sheepfold (Circular Turf)
707	379148	657911	136	40	Rectangular	Stone/Metal	Preston Burn	Sheep enclosure (Complex)
708	377013	656365	5	2	Rectangular	Stone/Turf?	Gateside	Field Enclosure (Rectangular)
709	375017	655981		13	Circular	Turf	Plender Burn	Sheepfold (Circular Turf)
710	372455	672566		30	Circular	Turf	Braidwood Howes	Sheepfold (Circular Turf)
711	373299	670807	21	3	Rectangular	Stone	Haystall Knowe	Field Enclosure (Rectangular)
712	372392	670089	75	40	Irregular	Stone	The Bank	Sheep enclosure (Complex)
713	372429	670127	67	48	Irregular	Stone	The Bank	Sheep House
714	370911	670819	100	25	Rectangular	Stone	Elmscleugh	Sheep enclosure (Complex)
715	373654	670844	11	8	Rectangular	Metal	The Haystall	Livestock Pen
716	373826	673192	15	15	Square	Metal	Thornton	Sheep enclosure (Complex)

No	Easting	Northing	length (m)	width/ diameter (m)	Shape	Material	Nearest Toponym	
717	362933	668210	9.5	4	Rectangular	STONE	ROOK LAW / CLINTS DODD	Field Enclosure (Corner)
718	364396	670764	11	2.5	Rectangular	?	RAMMER MOSS / SPOTT	Field Enclosure (Rectangular)
719	364259	671012	13	16	Rectangular	TURF	SPOTT / HALLS EDGE	Sheepfold (Other)
720	366669	670714	28	17	Rectangular	STONE	BOONSLY / SPOTT	Farmstead
721	362629	671180	26.5	17	Rectangular	STONE	LUCKNOW/SANDY KNOWE/RED CLEUGH	Farmstead
722	362178	671179	13	15	Rectangular	STONE	RED CLEUGH/DENCHRIE	Field Enclosure (Corner)
723	360494	671169	14	3.5	Rectangular	STONE	NEWMAINS	Sheep enclosure (Complex)
724	361121	671348	9	3	Rectangular	NOT VISIBLE	NEWMAINS	Field Enclosure (Rectangular)
725	369261	671375	30.5	44	Rectangular COMPLEX	NOT VISIBLE	ELMSCLEUGH/ELMSCLEUGH WATER	Field Enclosure (Rectangular)
726	360121	672100	15	4	Rectangular	NOT VISIBLE	OVERFIELD PLANTATION	Field Enclosure (Rectangular)
727	359548	672012	13.5	3	Rectangular	NOT VISIBLE	OVERFIELD PLANTATION	Field Enclosure (Rectangular)
728	363073	672290	7	6	Rectangular	NOT VISIBLE	WELL HILL	Field Enclosure (Corner)
729	365206	672179	75	11	Rectangular COMPLEX	STONE	THE KNOCK	Sheep enclosure (Complex)
730	365433	672363	99	18	Rectangular COMPLEX	NOT VISIBLE	HARTSIDE	Field Enclosure (Rectangular)
731	365399	672518	26	19	Rectangular	NOT VISIBLE	GAIRY BURNS	Sheep House
732	365836	672916	22.5	13	Y SHAPE	NOT VISIBLE	THE SNEEP	Sheepfold (Other)
733	364692	672987	9	3	Rectangular	STONE	PATHHEAD	Livestock Enclosure
734	368477	673453	17.5	19	Rectangular	NOT VISIBLE	THE BRUNT	Field Enclosure (Corner)
735	366399	673808	4.5	2	Rectangular	?	HIGH SIDE HILL / CHESTERS FORT	Sheepfold (Other)
736	371485	658684	10	4.5	Rectangular	?	TANKWOOD/ASHWOOD	Livestock Enclosure
737	370367	659237	22	22	Rectangular	STONE	DYESHAUGH	Livestock Enclosure
738	379252	659660	53	11	Rectangular		HOARDWEEL/WHITEADDER WATER	Field Enclosure (Rectangular)
739	377635	659792	60	40	Rectangular		COCKBURN EAST	Livestock Enclosure

No	Easting	Northing	length (m)	width/ diameter (m)	Shape	Material	Nearest Toponym	
740	370641	659988	13.5	5.5	Rectangular		BROOMBANK COTTAGE	Field Enclosure (Rectangular)
741	370100	659837	7	3.5	Rectangular		RAVEN'S CRAIG	Field Enclosure (Rectangular)
742	370261	660393	27	4.5	Rectangular		FELLCLEUGH	Field Enclosure (Rectangular)
743	368869	660464	10	6	Rectangular		HOWBOG	Farmstead
744	370297	660649	32.5	4	Rectangular		FELLCLEUGH	Field Enclosure (Rectangular)
745	374891	660703	10	3	Rectangular		ELLERBURN	Field Enclosure (Rectangular)
746	378075	660717	12.5	9	Rectangular		RETREAT WOOD	Field Enclosure (Rectangular)
747	372247	660843	78	34.5	Rectangular COMPLEX		TODLEA HILL	Sheep enclosure (Complex)
748	370543	660978	13.5	6	Rectangular		DAMHEAD STRIP	Field Enclosure (Rectangular)
749	368803	660959	8.5	5.5	Rectangular		HOWBOG HILL	Field Enclosure (Rectangular)
750	367777	660905	31	18	OVAL		THORTER CLEUGH	Sheepfold (Circular Turf)
751	367121	660801	180	185	Square		HILL WOOD	Livestock Enclosure
752	374843	661415	19.5	20	Y SHAPE		FRAMPATH / STEELE BURN	Sheepfold (Other)
753	370806	661255	16	5.5	Rectangular		HIGHSTRIP	Sheep enclosure (Complex)
754	373365	661516	51	14	COMPLEX		GREENHOPE	Keyhole Fold
755	367871	661863	90	46.5	COMPLEX		CRANSHAWS	Sheep enclosure (Complex)
756	372132	661926		15.5	Circular		GREENHOPE BURN	Sheepfold (Circular Turf)
757	374393	661912	40	12	SQUARE		THREE CORNERED WOOD	Sheep enclosure (Complex)
758	375654	661989	47	12.5	Rectangular		SMITHY HILL	Sheep enclosure (Complex)
759	371957	662337	21	14	Rectangular		GREENHOPE BURN	Sheepfold (Other)
760	375703	662801	23	10	Rectangular		ABBAY ST BATHAN/SHANNABANK	Field Enclosure (Rectangular)
761	369217	662904	18	4	Rectangular		HAREBURN	Sheep Dip / Sheep Wash
762	370116	663449		20.83	Circular	Turf?	Blackford Rig	Sheepfold (Circular Turf)
763	370165	663482		18.13	Circular	Turf?	Blackford Rig	Sheepfold (Circular Turf)
764	372217	663421	13	13	SQUARE		GREAT LADIES CLEUGH	Sheepfold (Other)

No	Easting	Northing	length (m)	width/ diameter (m)	Shape	Material	Nearest Toponym	
765	375674	663760	24	20	TRIANGLE		WHAREBURN	Field Enclosure (Corner)
766	375744	663852	7.5	5.5	Rectangular		WHAREBURN	Field Enclosure (Rectangular)
767	376059	664376	50	14	Rectangular COMPLEX		WHITEBURN	Sheep enclosure (Complex)
768	371699	664742	9	9	SQUARE		MONYNUT RIVER/MIDDLE MONYNUT	Field Enclosure (Corner)
769	374271	664664	44	14	Rectangular COMPLEX		CAIRN CLEUGH	Sheep enclosure (Complex)
770	374462	664663	8.5	2	Rectangular		CAIRN CLEUGH	Sheep Dip / Sheep Wash
771	374803	664675		16	Circular		CAIRN CLEUGH	Sheepfold (Circular Stone)
772	369342	667699		10	Circular		Monynut water	Sheepfold (Circular Stone)
773	371284	667826		9	Circular		PARTAN CLEUGH	Sheepfold (Circular Turf)
774	373304	668597	15	15	SQUARE		HERIOT BURN / DOD STRIP	Sheepfold (Other)
775	374207	668591	48	48	SQUARE		HOPRIGSHIEL WOOD	Livestock Enclosure
776	370990	662675	6	4	Rectangular		MIDDLE LEA	Field Enclosure (Rectangular)
777	376949	661619	22	12	Rectangular		BLACKERSTONE	Field Enclosure (Corner)
778	372862	661736		18	Circular		SHORTHOPE CLEUGH	Sheepfold (Circular Stone)
779	369558	661851	16	3	Rectangular		WHITEADDER WATER	Field Enclosure (Rectangular)
780	369767	661849	25	18	Rectangular		CRAIGS WINDSHIEL	Livestock Enclosure
781	371785	667339	25	26	Square		PARTAN CLEUGH	Sheep Shelter (Structure)
782	369470	666674			Circular		UPPER MONYNUT FOREST	Sheepfold (Circular Turf)
783	369657	666164			Circular		CRICHNESS HILL/UPPER MONYNUT	Sheepfold (Circular Turf)
784	367150	674545			Rectangular		SPOTT DOD / WEST MAINS WOOD	Field Enclosure (Corner)
785	365747	670382	34		COMPLEX		WATCH LAW	Field Enclosure (Corner)
786	375642	661544	10	8	Rectangular	Stone	Mountjoy Wood	Field Enclosure (Corner)
787	362834	670691	10	8	Circular	Drystone	Deuchrie Edge	Sheepfold (Circular Stone)

No	Easting	Northing	length (m)	width/ diameter (m)	Shape	Material	Nearest Toponym	
788	362590	671128	23	14	Rectangular	STONE	LUCKNOW/SANDY KNOWE/RED CLEUGH	Sheep enclosure (Complex)
789	344552	649538	40	17	Rectangular	Stone	Cordlean	Sheep enclosure (Complex)
790	344922	645778	108	91	Irregular	Stone	Old Craigend	Farmstead
791	344687	649012	27	15	Irregular	Stone?	Carsinker Plantation	Sheep Dip / Sheep Wash
792	345142	648719		22	Circular	Stone/turf?	Carsinker Law	Sheepfold (Circular Stone)
793	344940	646884	20	15	Curved	Stone?	Craigend Hill	Sheep Stell C
794	344785	646548	68	7	Curved	Stone?	Craigend Hill	Sheep Stell C
795	345761	647015	25	20	Irregular	Stone?	Little Cathpair	Sheep enclosure (Complex)
796	344930	645769	77	21	Irregular	Stone	Old Craigend	Sheep enclosure (Complex)
797	345342	645766	31	23	Rectilinear	Stone?	Craigend	Sheep Dip / Sheep Wash
798	345405	645716	17	15	U-shaped	Stone/metal	Craigend	Sheep House
799	345240	646071	43	2	Rectilinear	Stone	Craigend Hill	Sheep Dip / Sheep Wash
800	345446	646203	31	2	Rectilinear	Stone	Craigend Hill	Sheep Dip / Sheep Wash
801	345787	646857	19	10	Rectangular	Stone?	Little Cathpair	Sheepfold (Other)
802	346961	646819	48	18	Rectangular	Stone	Cathpair	Sheep enclosure (Complex)
803	346981	647064	36	17	Irregular	Stone?	Cathpair	Sheep Dip / Sheep Wash
804	346439	647823	75	17	Irregular	Stone?	Mitchelston	Sheep Dip / Sheep Wash
805	346011	648009	6	5	Rectangular	Stone?	Mitchelston	Field Enclosure (Rectangular)
806	346106	648895		13	Circular	Turf?	Mitchelston	Sheepfold (Circular Turf)
807	345707	649482	20	20	Square	Stone?	New Kittyflat	Field Enclosure (Rectangular)
808	348319	649065	21	19	Rectilinear	Stone?	Inchkeith	Sheepfold (Other)
809	348276	649074	30	8	Rectangular	Stone/metal?	Inchkeith	Sheep enclosure (Complex)
810	349481	649039	47	20	Irregular	Turf/stone?	Edgarhope Forest	Field Enclosure (Corner)
811	350174	649957	45	41	Irregular	Turf/stone?	Pilmuir	Sheep enclosure (Complex)
812	351604	649645	8	3	Rectangular	Turf/stone?	Trabrown Hill Plantation	Field Enclosure (Corner)

No	Easting	Northing	length (m)	width/ diameter (m)	Shape	Material	Nearest Toponym	
813	350995	649056	32	17	Irregular	Stone/metal?	Trabrown	Sheep enclosure (Complex)
814	351124	649121	23	19	Rectangular	Stone/metal?	Trabrown	Sheep Dip / Sheep Wash
815	351999	648924	13	10	Rectangular	Stone/turf?	West Lodge/Greenside	Field Enclosure (Corner)
816	352793	648797	45	38	Irregular	Stone/turf?	Standalane Plantation/ Oliester Dub Plantation	Sheep Dip / Sheep Wash
817	352985	647887	37	10	Irregular	Stone?	Lauder-Rotten Row Lodge	Field Enclosure (Corner)
818	353278	648540	16	5	Rectangular	Turf	Leader Water	Field Enclosure (Rectangular)
819	353043	648469	28	11	Irregular	Stone/metal?	Standalane Plantation	Field Enclosure (Corner)
820	353487	648663	10	3	Rectangular	Stone/metal?	Norton Plantation	Field Enclosure (Corner)
821	353966	648794	46	8	Rectilinear	Stone/turf?	Norton Plantation	Sheep enclosure (Complex)
822	354517	647886		22	Circular	Turf?	Wanton Walls-near	Sheepfold (Circular Turf)
823	355043	649071	21	26	Irregular	Stone/turf?	Park Glen	Sheep enclosure (Complex)
824	353798	649241	29	16	Irregular	Stone/metal?	Black Strip	Sheep Dip / Sheep Wash
825	352649	649660	35	17	Irregular	Stone/metal?	New Mills	Sheep Dip / Sheep Wash
826	356042	649560		20	Circular	Drystone	Snawdon Burn	Sheepfold (Circular Stone)
827	356054	649596	68	6	Rectilinear	Stone	Snawdon Burn	Sheep Stell wall
828	355843	649776	34	13	Semi-circular	Metal/stone?	Snawdon Burn	Field Enclosure (Corner)
829	356789	649679	62	15	Irregular	Stone/metal?	Heugh Hill	Sheep Dip / Sheep Wash
830	357107	648970		11	Key-hole	Stone	Heugh Hill	Keyhole Fold
831	356983	649084	6	3	Rectilinear	Stone/timber?	Heugh Hill	Field Enclosure (Rectangular)
832	356474	648422	60	22	Rectangular	Stone/turf?	Thirlestane Burn	Sheep enclosure (Complex)
833	356401	648493	35	23	Irregular	Stone/turf?	Thirlestane Burn	Sheep enclosure (Complex)
834	356702	648570	15	8	Rectilinear	Turf?	Thirlestane Hill	Field Enclosure (Rectangular)
835	356979	648419	17	12	Rectilinear	Turf?	Thirlestane Hill	Field Enclosure (Corner)
836	358314	649953		13	Circular	Stone	Blythe	Sheepfold (Circular Stone)
837	358332	649958	86	23	Irregular	Stone/metal	Blythe	Sheep enclosure (Complex)

No	Easting	Northing	length (m)	width/ diameter (m)	Shape	Material	Nearest Toponym	
838	358365	649389		15	Circular	Drystone	Blythe	Sheepfold (Circular Stone)
839	361930	649135	42	19	Irregular	Turf?	Howlet's Ha'	Sheep Dip / Sheep Wash
840	362268	649394	29	8	Rectilinear	Stone/metal?	Jordonlaw	Sheep Dip / Sheep Wash
841	362265	649651	16	18	Irregular	Stone/metal?	Jordonlaw	Field Enclosure (Corner)
842	359509	647558	19	8	Irregular	Stone/metal?	Old Whiteburn	Sheep enclosure (Complex)
843	359103	647611	11	2	Irregular	Metal?	Whiteburn	Sheep Dip / Sheep Wash
844	359353	648945	50	10	Rectilinear	Stone/turf?	Gateside/Brunta Burn	Livestock Enclosure
845	357705	648279	28	14	Rectilinear	Stone/metal?	Heugh	Livestock Enclosure
846	356135	648831	22	18	Rectangular	Stone/metal?	Snawdon	Sheep House
847	354827	648272	18	2	Irregular	Stone/metal?	Wanton Walls	Sheep Dip / Sheep Wash
848	354773	648206	37	4	Rectilinear	Stone/metal?	Wanton Walls	Sheepfold (Other)
849	353869	647265	25	12	Irregular	Stone?	Peatman Road/Eagle Lodge	Field Enclosure (Corner)
850	351581	647892	30	22	Rectangular	Stone	Scarce Law	Field Enclosure (Corner)
851	350931	647632	22	19	Triangular	Turf?	Scarce Law	Field Enclosure (Rectangular)
852	350462	646762	142	140	Star	Stone?	Lauder Common	Livestock Enclosure
853	350449	646671	56	25	Irregular	Stone/metal	Lauder Common	Sheep enclosure (Complex)
854	349853	647675	55	17	Irregular	Stone/metal?	Whitlaw	Sheep Dip / Sheep Wash
855	349649	647765	49	25	Irregular	Stone/metal	Whitlaw	Field Enclosure (Corner)
856	349899	648308	70	35	Rectangular	Turf?	Trabrown Hill	Field Enclosure (Rectangular)
857	349320	647773	72	14	Irregular	Turf?	Whitlaw	Sheep Dip / Sheep Wash
858	353332	663209		20	Circular	Turf?	Gala Law	Sheepfold (Circular Turf)
859	353095	663045		26	Circular	Turf?	Threep Law	Sheepfold (Circular Turf)
860	360128	667385		26	Circular	Turf?	Papana Water	Sheepfold (Circular Turf)