

Cell Reports

Supplemental Information

**Immunomodulation of Selective Naive T Cell
Functions by p110 δ Inactivation Improves
the Outcome of Mismatched Cell Transplantation**

Jean-Marc Doisne, Christian M. Hüber, Klaus Okkenhaug, and Francesco Colucci

Figure S1 – Related to Figure 3

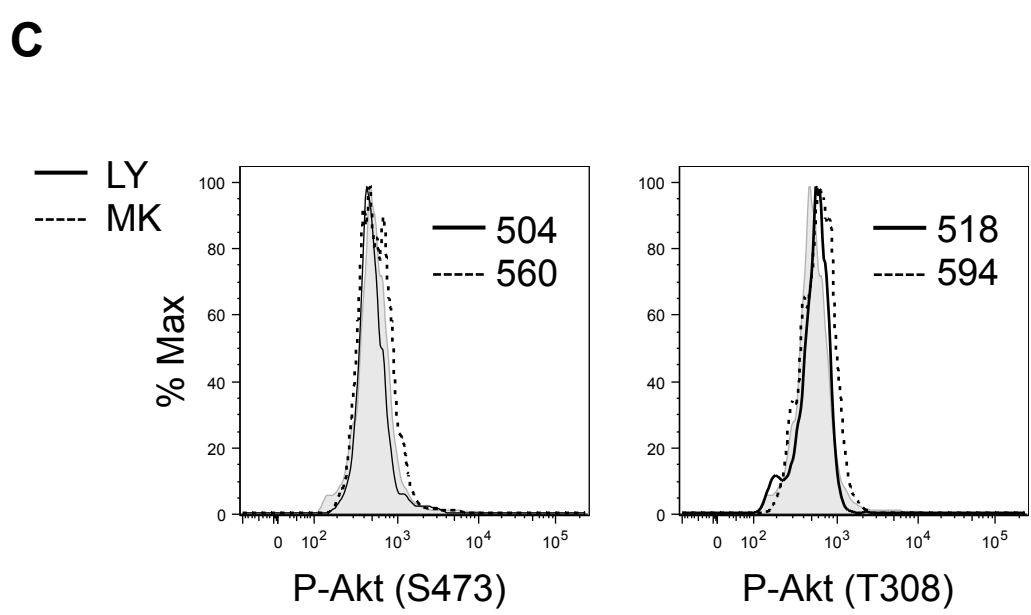
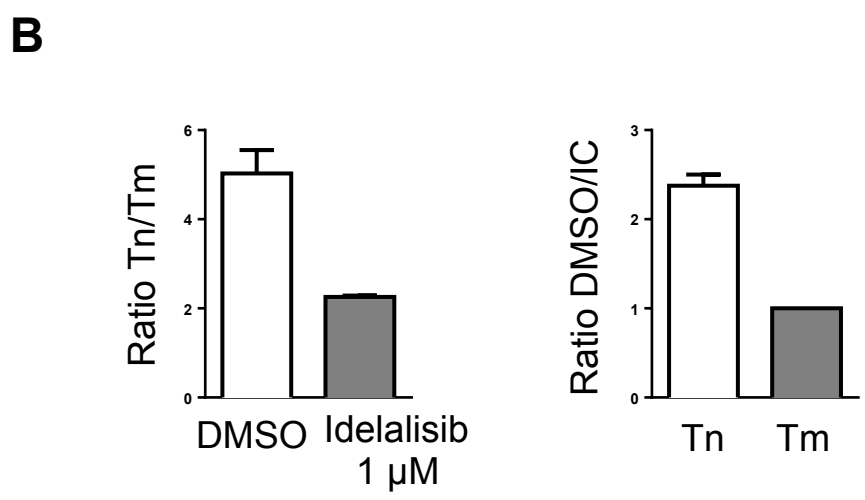
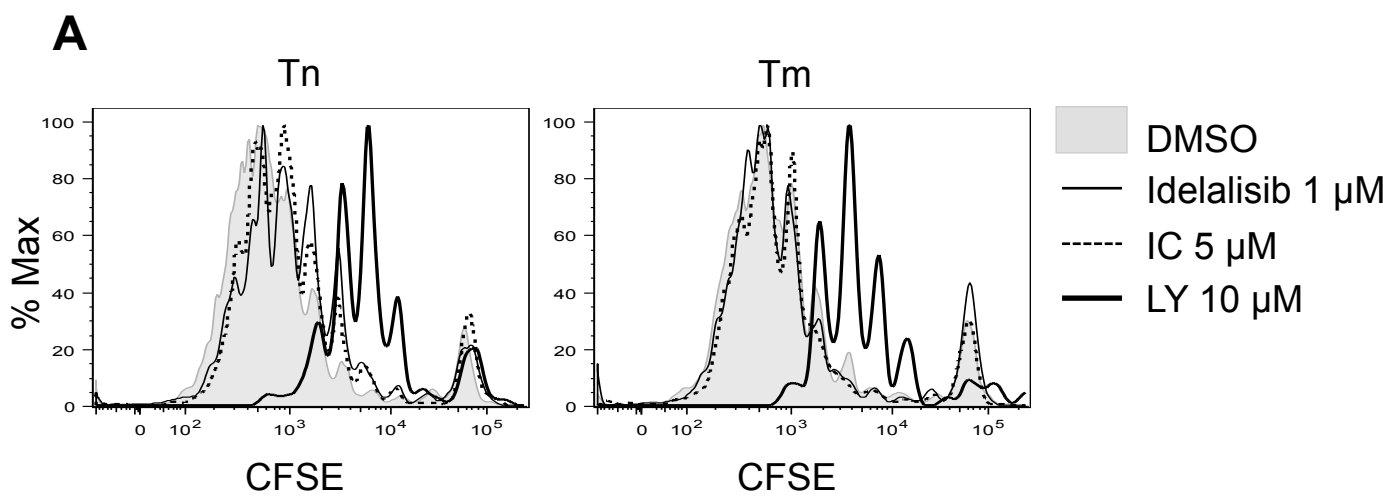
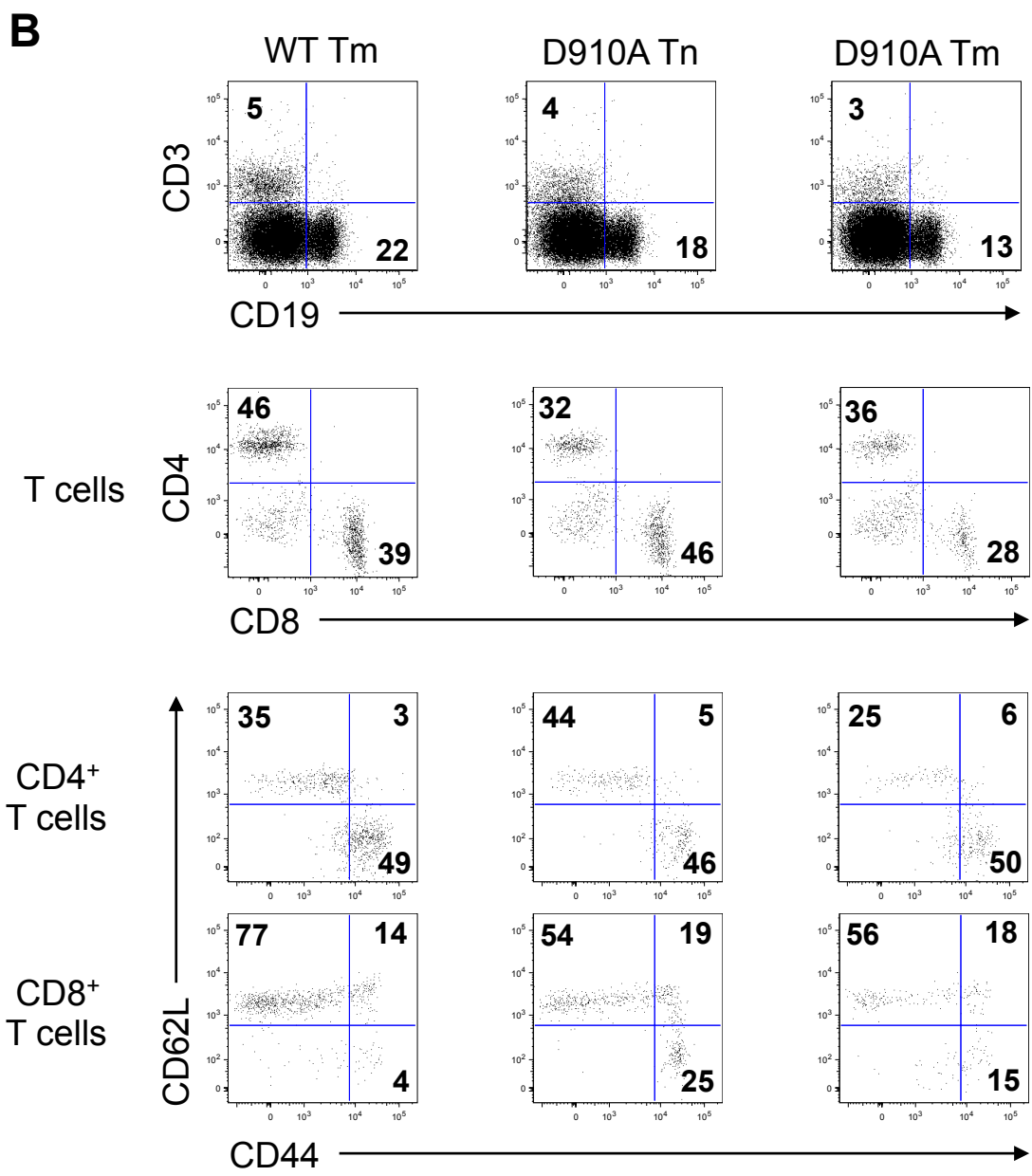
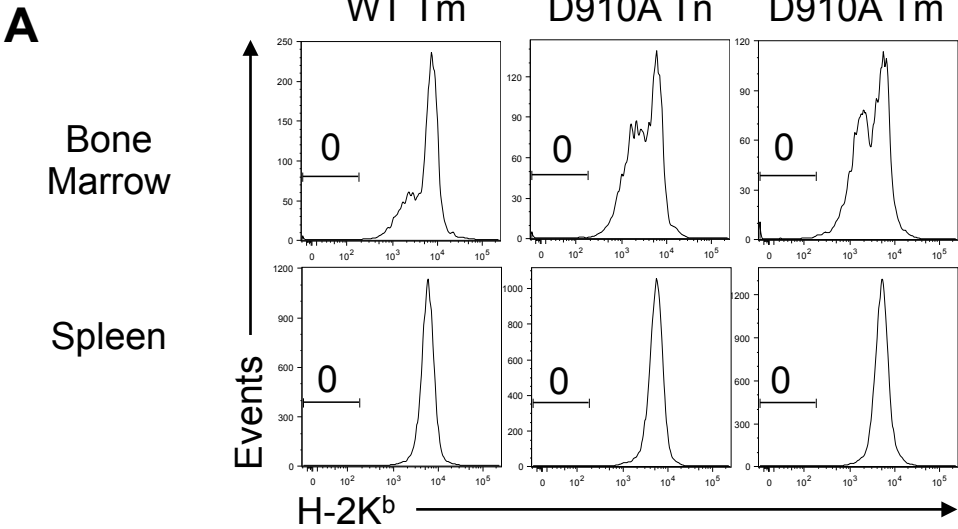


Figure S2 – Related to Figure 4



SUPPLEMENTAL LEGENDS

Figure S1 – Related to Figure 3. (A) Same experiment as in **Fig 3A** including treatments with DMSO (vehicle), Idelalisib (1 μ M), IC87114 (5 μ M) and LY294002 (10 μ M). Results are representative of two independent experiments. (B) Alloreactive T cells were generated as in **Fig 3C** in the presence of DMSO or Idelalisib (1 μ M). Results are presented as in **Fig 3C** and are representative of two independent experiments. (C) Alloreactive Tn generated in culture in the presence of DMSO were pre-treated with LY294002 (10 μ M) or MK-2206 (5 μ M) for 30 min then stained for P-Akt (Ser473) or P-Akt (Thr308). Results are representative of two independent experiments.

Figure S2 – Related to Figure 4. (A-B) Surviving mice from WT Tm group, D910A Tn group and D910A Tm group (depicted in Fig. 4) were analyzed by flow cytometry at day 91. (A) Histograms show representative examples of the absence of A20 cells (H-2K^b CD19⁺) in the BM and the spleen. (B) Dot plots show representative examples of leukocyte composition in the BM: T and B cells (upper panel), CD4⁺/CD8⁺ T cells (middle panel) and their differentiation phenotype (bottom panel).